

PLAN N^o 19258

Deposited in the Land Registry Office at Prince George, B.C. this 29 day of MARCH, 1970.

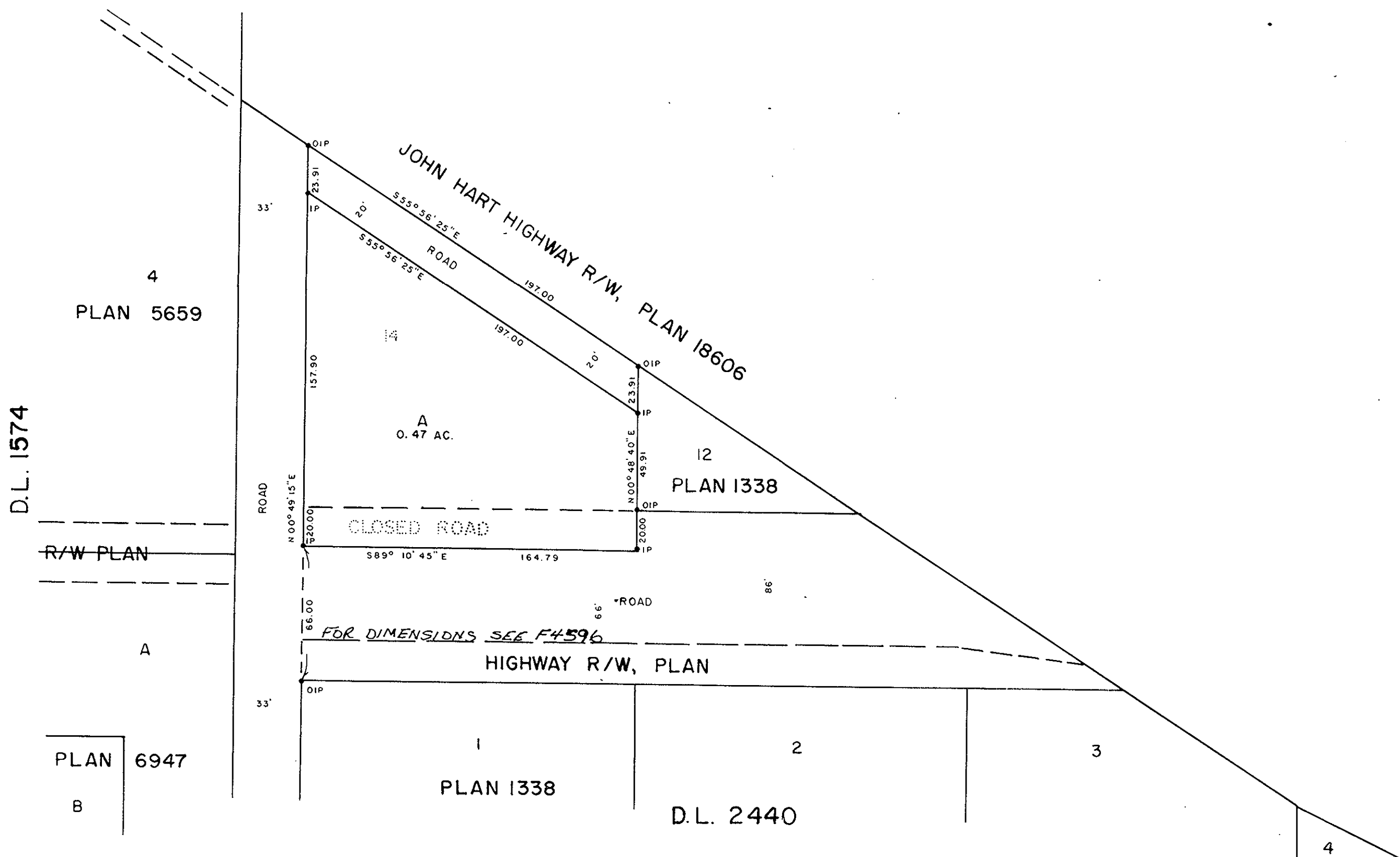
R. H. Carter
Registrar

PLAN OF SUBDIVISION OF LOT 14, PLAN 1338
AND OF THE ADJACENT CLOSED ROAD
DISTRICT LOT 2440,
CARIBOO DISTRICT, BRITISH COLUMBIA

SCALE: 1" = 50'

NOTE: Bearings are astronomic, derived from the West boundary of Lot 14, Plan 1338 as shown on Plan 18606.

LEGEND: • OIP denotes an old iron pin found.
• IP denotes an iron pin set.



D.L. 1574

R/W PLAN

A

PLAN 6947

B

PLAN 1338

D.L. 2440

ELIS ONGMAN LTD.

I, DONALD A. DUFFY of the City of Prince George, a British Columbia Land Surveyor, make oath and say that I was present at and did personally superintend the survey represented by this plan and that the survey and plan are correct. The said survey was completed on the 4TH day of September, 1970.

Donald A. Duffy
B.C.L.S.

Sworn before me this 22 day of September, 1970.

Robert A. Carter
A Commissioner for taking Affidavits for British Columbia.

Approved under the Land Registry Act this 18 day of December, 1970.

W. D. Usher
Approving Officer, Dept. of Highways.

This plan lies within the Fraser-Fort George Regional District.

W. D. USHER & ASSOCIATES
LAND SURVEYORS
PRINCE GEORGE - B.C.
DE 65 3056