

PLAN NO. 19229

Deposited in the Land Registry Office at
Prince George this 15. day of MARCH 1971.

Dale Keown
Surveyor

LEGEND
Bearings are astronomic, derived from observations on
Polaris and are referred to the meridian through the
South West Corner D.L. 816
Latitude 53° 59' North
Longitude 122° 42' West

- P. Con. ----- Standard Concrete Post.
- P. Rock ----- Standard Rock Post.
- P.P. ----- Standard Pipe Post.
- I.P. ----- Standard Iron Post.
- O ----- Denoting "Old"
- Wt. ----- Denoting "Witness"
- C.I.P. ----- Capped Iron Post.

I, Dale Keown, of the City of Prince George,
British Columbia Land Surveyor, make oath and
say that I was present at and did personally
superintend the survey represented by this plan
and that the survey and plan are correct.

The said survey was completed on
the 22nd day of January 1971.

Dale Keown
B. C. L. S.

Sworn before me at Prince George, B.C.,
this 13th day of February 1971.

H. L. ...
Commissioner for taking affidavits for
British Columbia.

This plan lies within the Fraser Fort-George
Regional District.

BOOK OF REFERENCE		
LEGAL DESCRIPTION	AREA IN ACRES	
R/W in NW 1/4 D.L. 4041 except PL 15755	1.388	
R/W in Lot 1, PL 15755, D.L. 4041	0.562	
R/W in NE 1/4 D.L. 4041	2.351	
R/W in Lot A, PL 16311 D.L. 4038	0.048	
R/W in SW 1/4, D.L. 818	2.475	
R/W in NE 1/4, D.L. 818	0.268	
R/W in NE 1/4, D.L. 818 as shown on PL A-2870	0.582	
R/W in W 12.5 ch. of N. 40 ch. D.L. 817 as shown on PL A-2870	0.038	
R/W in SW 1/4, D.L. 816	0.838	
CROWN LAND		
LEGAL DESCRIPTION	AREA IN ACRES	☞ DISTANCE
R/W in SE 1/4, D.L. 818, except PL CG 2814	0.904	991 feet
R/W in PL CG 2184, S.E. 1/4 D.L. 818	0.485	1029 feet

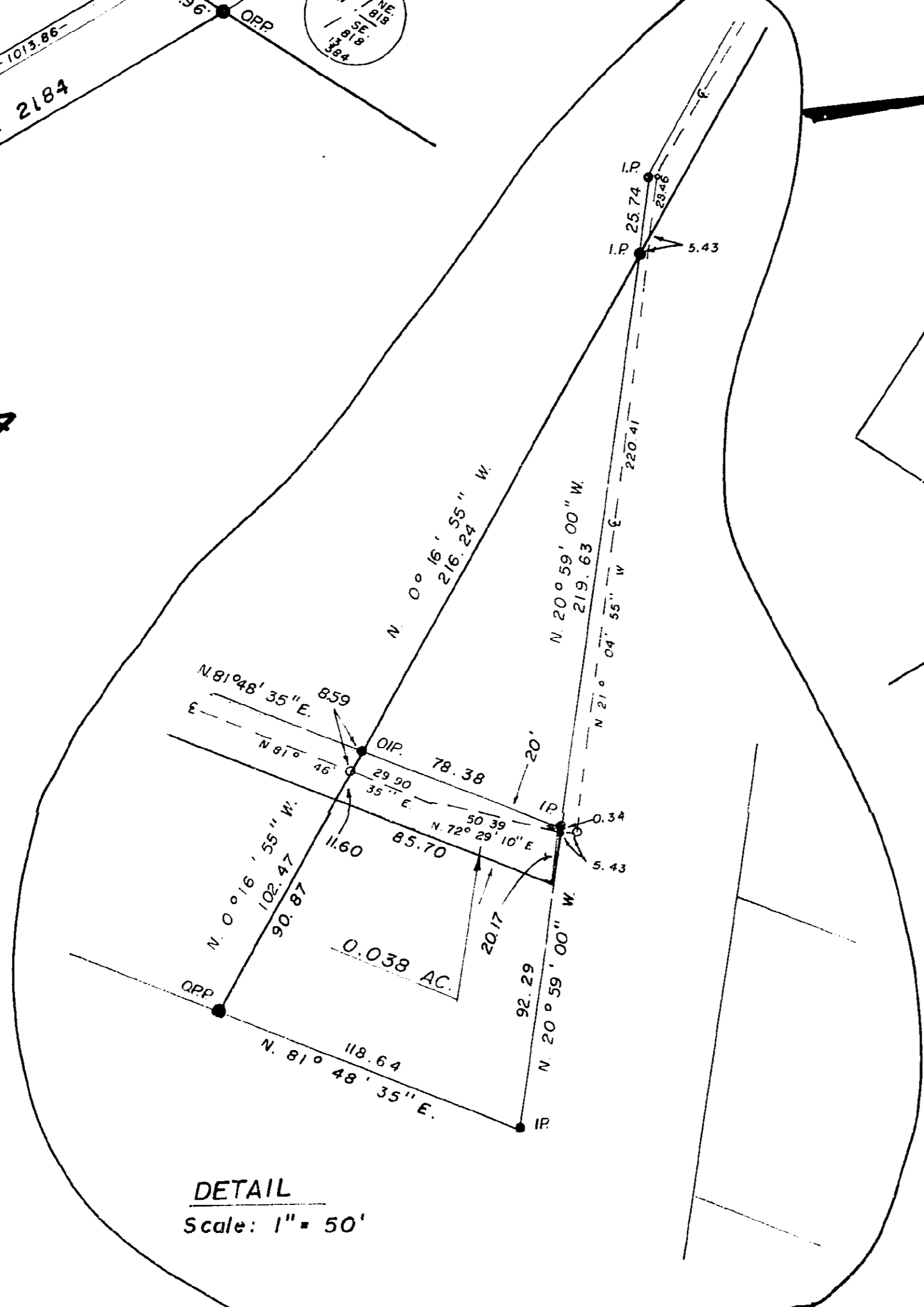
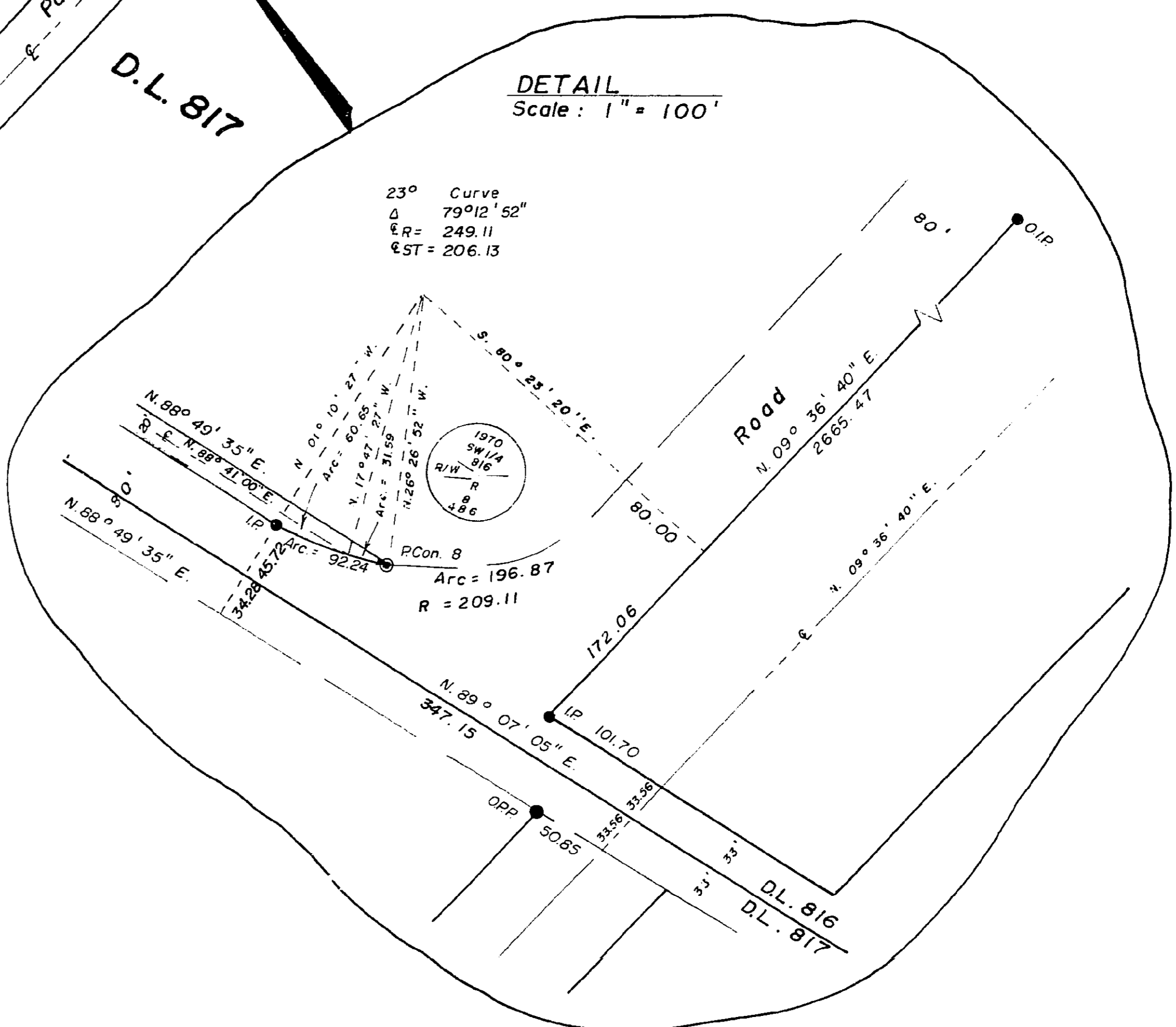
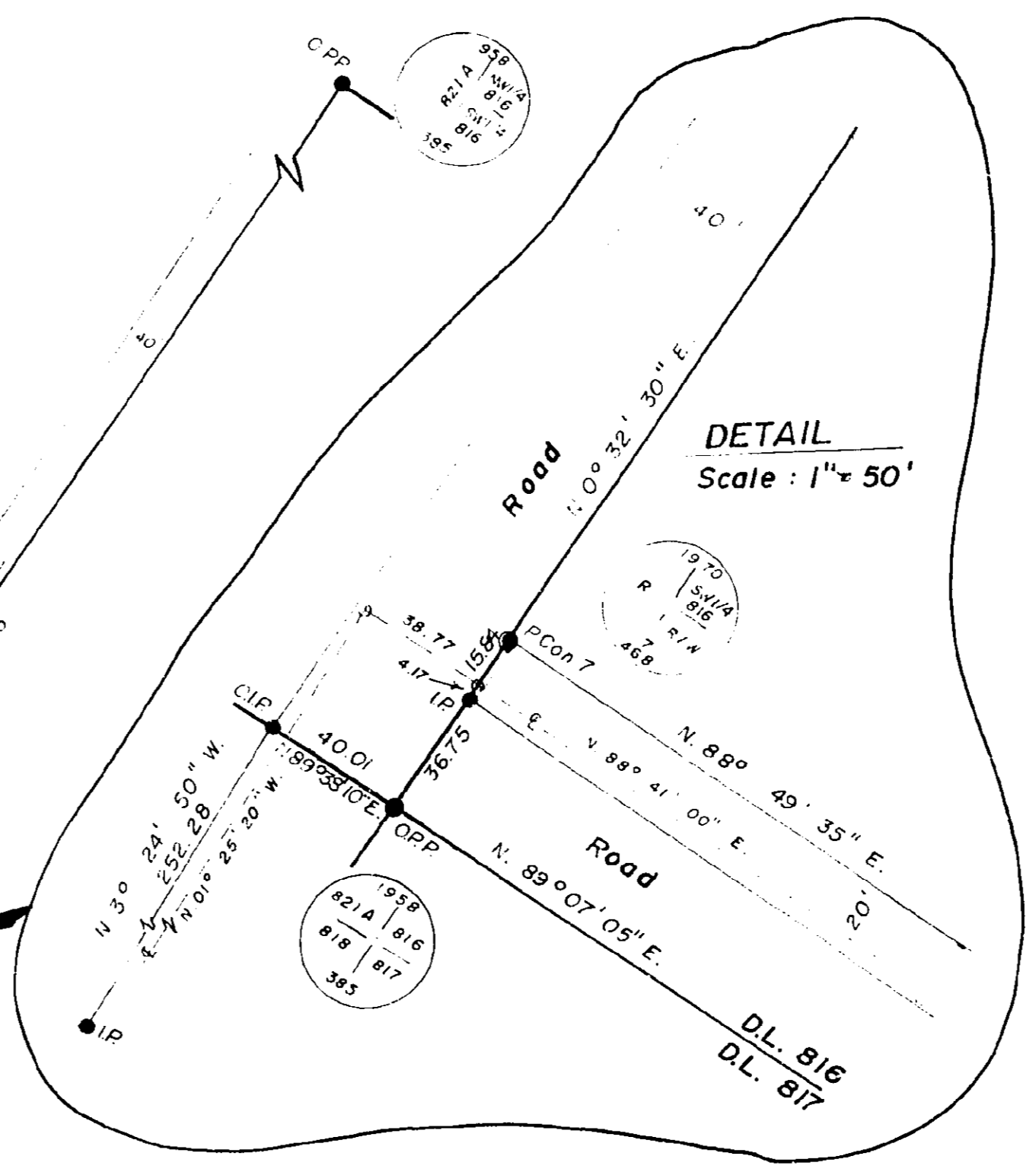
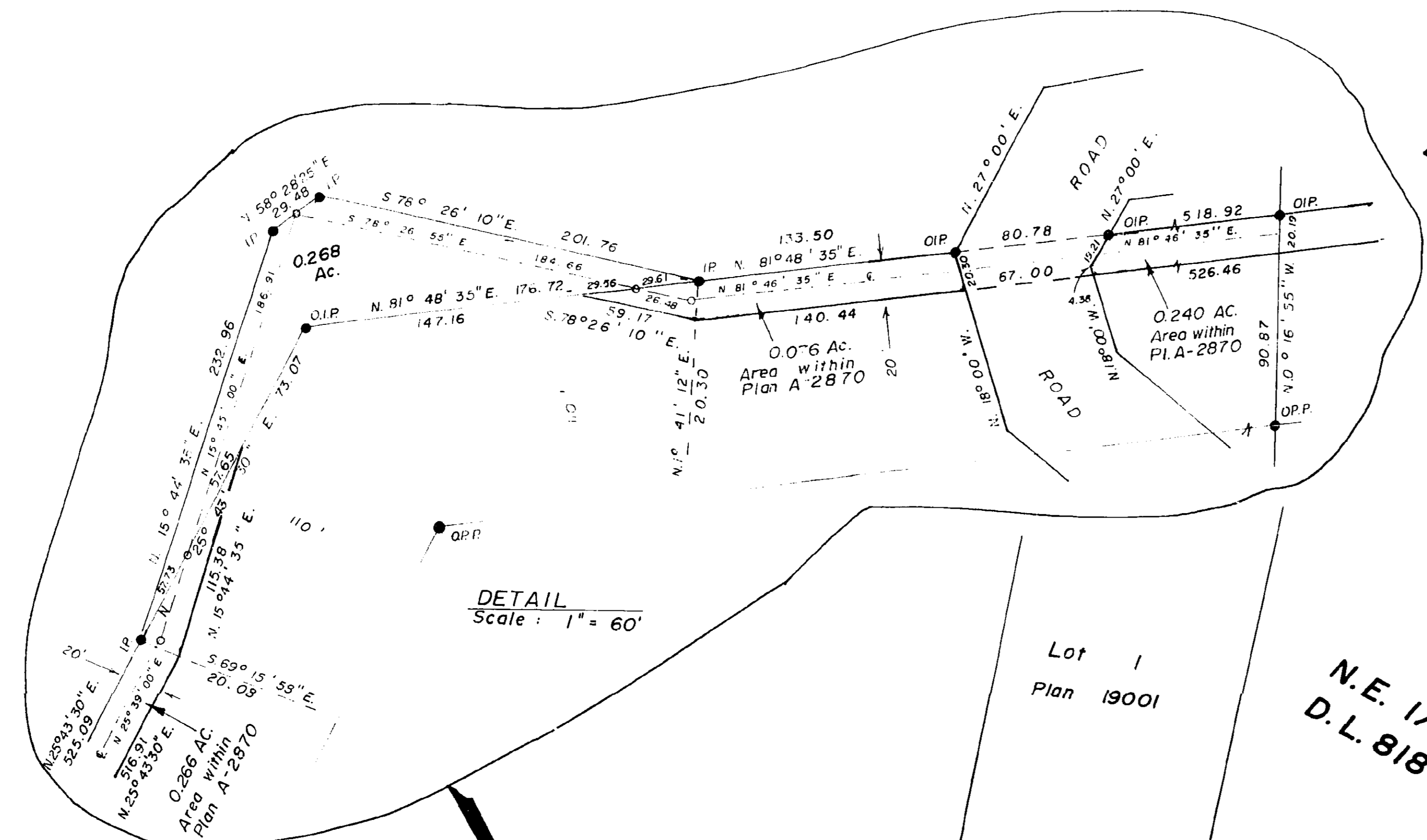
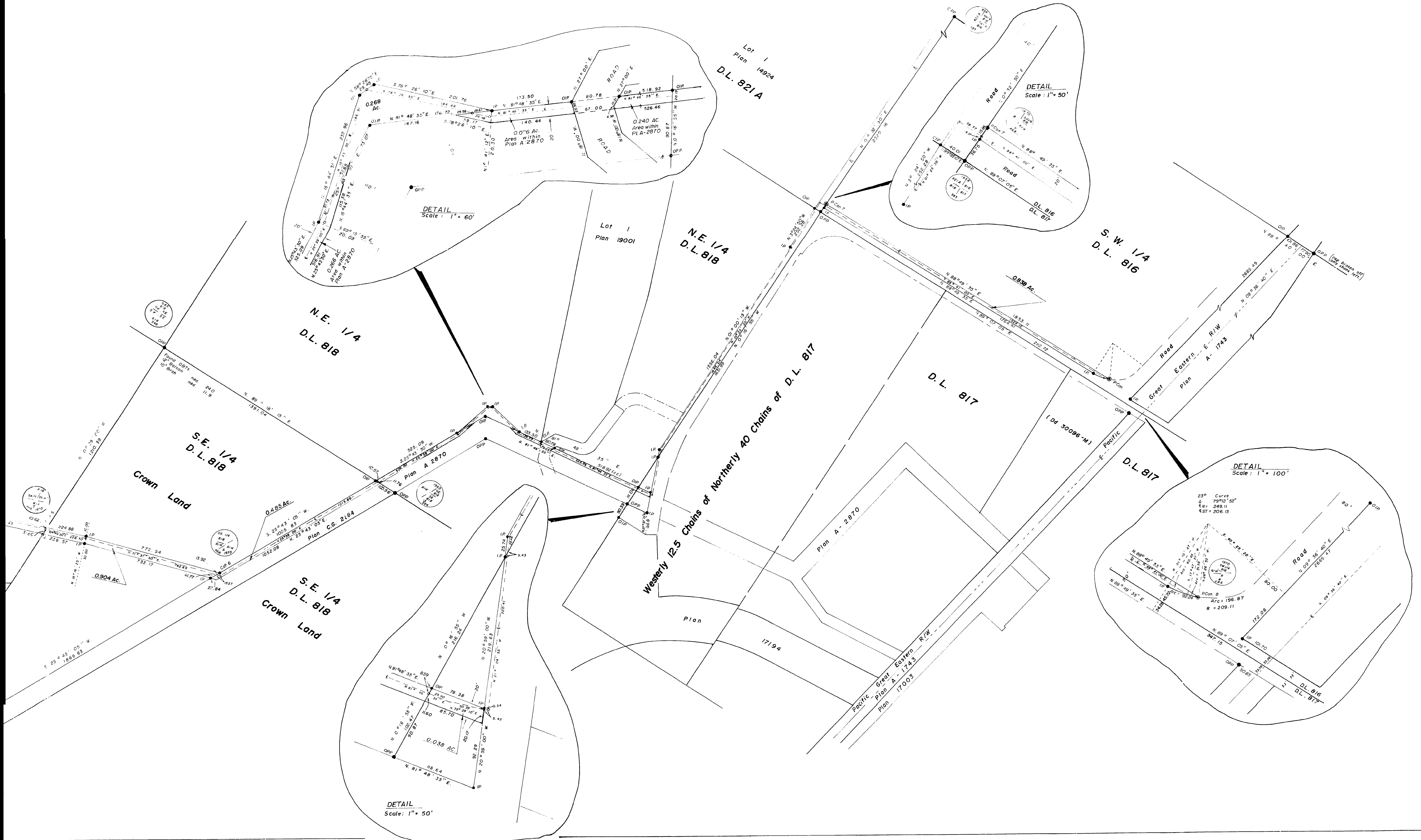
INLAND NATURAL GAS CO. LTD.

**PLAN OF RIGHT-OF-WAY
THROUGH
DISTRICT LOTS 4041, 4038, 818, 816, and 817,
CARIBOO DISTRICT.**

McWilliam, Whyte, Goble, & Assoc.,
B.C. Land Surveyors,
Prince George - Kamloops - Smithers.

Scale: 1" = 200'

Ref. No. 70181



R/W in NW
R/W in Lo
R/W in L
R/W in S
R/W in N
R/W in W
R/W in SE
R/W in SW
LEG
R/W in SE
R/W in PL

