

B.C. HYDRO & POWER AUTHORITY

PATRICIA-CHIEF LAKE TRANSMISSION LINE

PLAN OF RIGHT-OF-WAY THROUGH
**DISTRICT LOTS 343, 936,
 1430 AND 8170**
 CARIBOO DISTRICT,

PLAN No 19192

Deposited in the Land Registry
 Office at Prince George, B.C. this
24 day of FEBRUARY, 1971.

Registrar _____

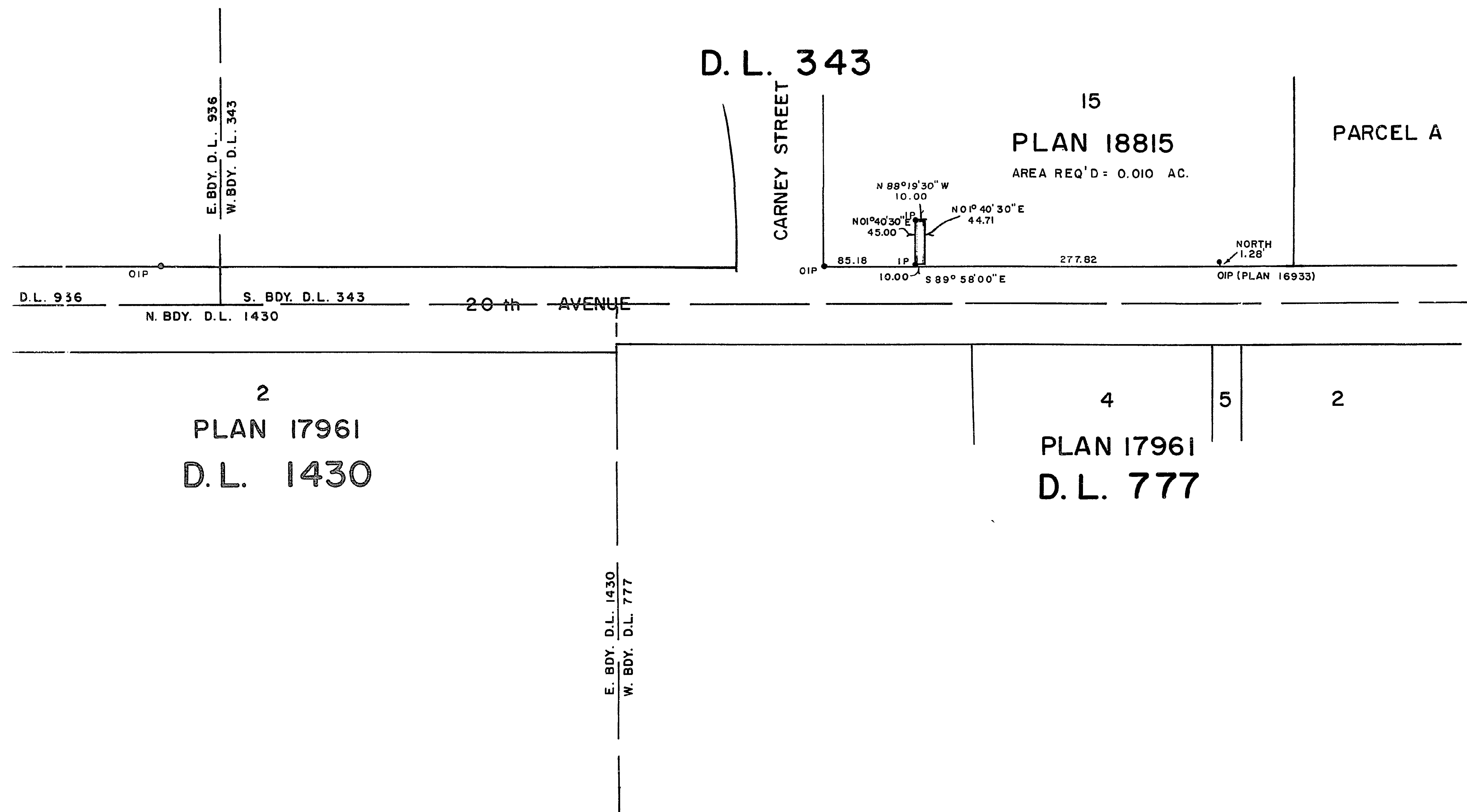
SCALE: 1" = 100'

NOTE: Bearings are astronomic, derived from
 Plans 18815 and 18915.

LEGEND: OPCON denotes an old concrete monument found.
 OIP denotes an old iron pin found.
 IP denotes an iron pin set.

BOOK OF REFERENCE

PARCEL	AREA REQ'D
LOT 15, PLAN 18815, D.L. 343	0.010 ACRE
LOT 1, PLAN 18815, D.L. S 343 & 936	0.009 ACRE
LOT 1, PLAN 18915, D.L. S 936 & 1430	0.006 ACRE
LOT 1, PLAN 17961, D.L. S 936, 1430 & 8170	0.022 ACRE



I, DONALD A. DUFFY of the City of Prince George
 a British Columbia Land Surveyor make oath and say
 that I was present at and did personally superintend
 the survey represented by this plan and that the survey
 and plan are correct. The said survey was completed
 on the 11th, day of December, 1970.

Donald A. Duffy
 B.C.L.S.

Sworn before me this 18th
 day of DEC, 1970.

Commissioner
 A Commissioner for taking Affidavits
 for British Columbia.

This plan lies with-in the Fraser-
 Fort George Regional District.

W.D. USHER & ASSOCIATES
 LAND SURVEYORS
 PRINCE GEORGE B.C.
 D.L. 47-50 3298-5

