

PLAN OF SUBDIVISION OF PARTS OF
 LOT A-PLAN 9004 AND
 LOT 221-PLAN 16269
 DISTRICT LOT 753
 CARIBOO DISTRICT, BRITISH COLUMBIA

PLAN N° 19163

Deposited in the Land Registry
 Office at Prince George, B.C. this
 8 day of FEBRUARY, 1971.

[Signature]
 Registrar

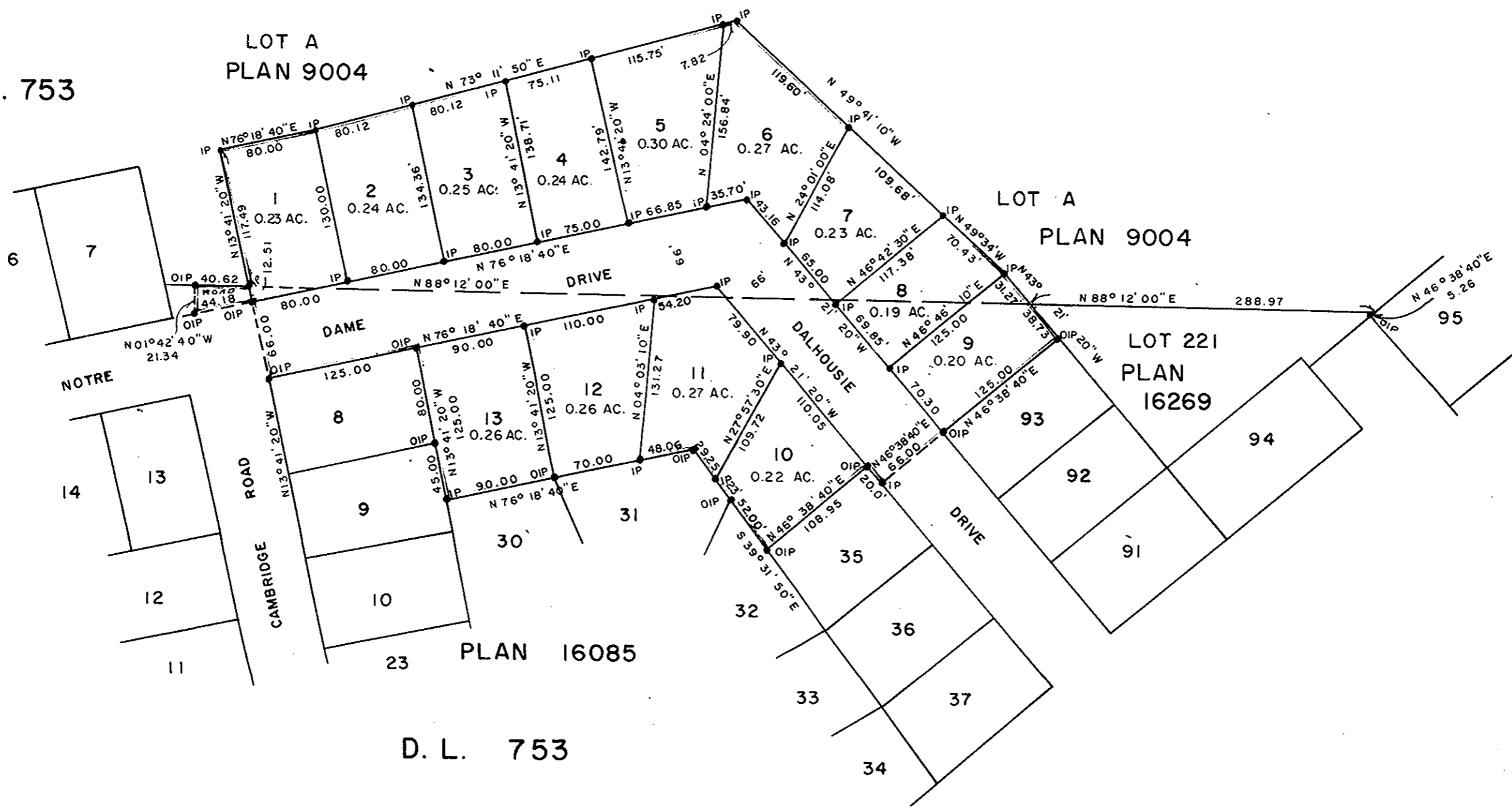
SCALE: 1" = 100'

NOTE: Bearings are astronomic, derived from the
 North west boundary of Lot 93, Plan 16085.

LEGEND: • OIP denotes an old iron pin found.
 • IP denotes an iron pin set.



D.L. 753



D.L. 753

I, DONALD A. DUFFY of the City of Prince George, a British Columbia Land Surveyor, make oath and say that I was present at and did personally superintend the survey represented by this plan and that the survey and plan are correct. The said survey was completed on the 11th day of DECEMBER, 1970.

[Signature]
 B.C.L.S.

Sworn before me this 29th day of JANUARY, 1971

Prince George College Lands Ltd.

[Signature] SECRETARY

Mortgagee:
 Montreal Trust Company

[Signature] ASST. SECRETARY

Approved under the Land Registry Act this 28th day of JANUARY, 1971

[Signature]
 Approving Officer, Dept. of Highways.

This plan lies within the Fraser-Fort George Regional District.

[Signature]
 A Commissioner for taking Affidavits for British Columbia.

W. D. USHER & ASSOCIATES
 LAND SURVEYORS
 PRINCE GEORGE - B.C.