

FROM 22254. 28.1

22331.  
22332.

PLAN No 19109

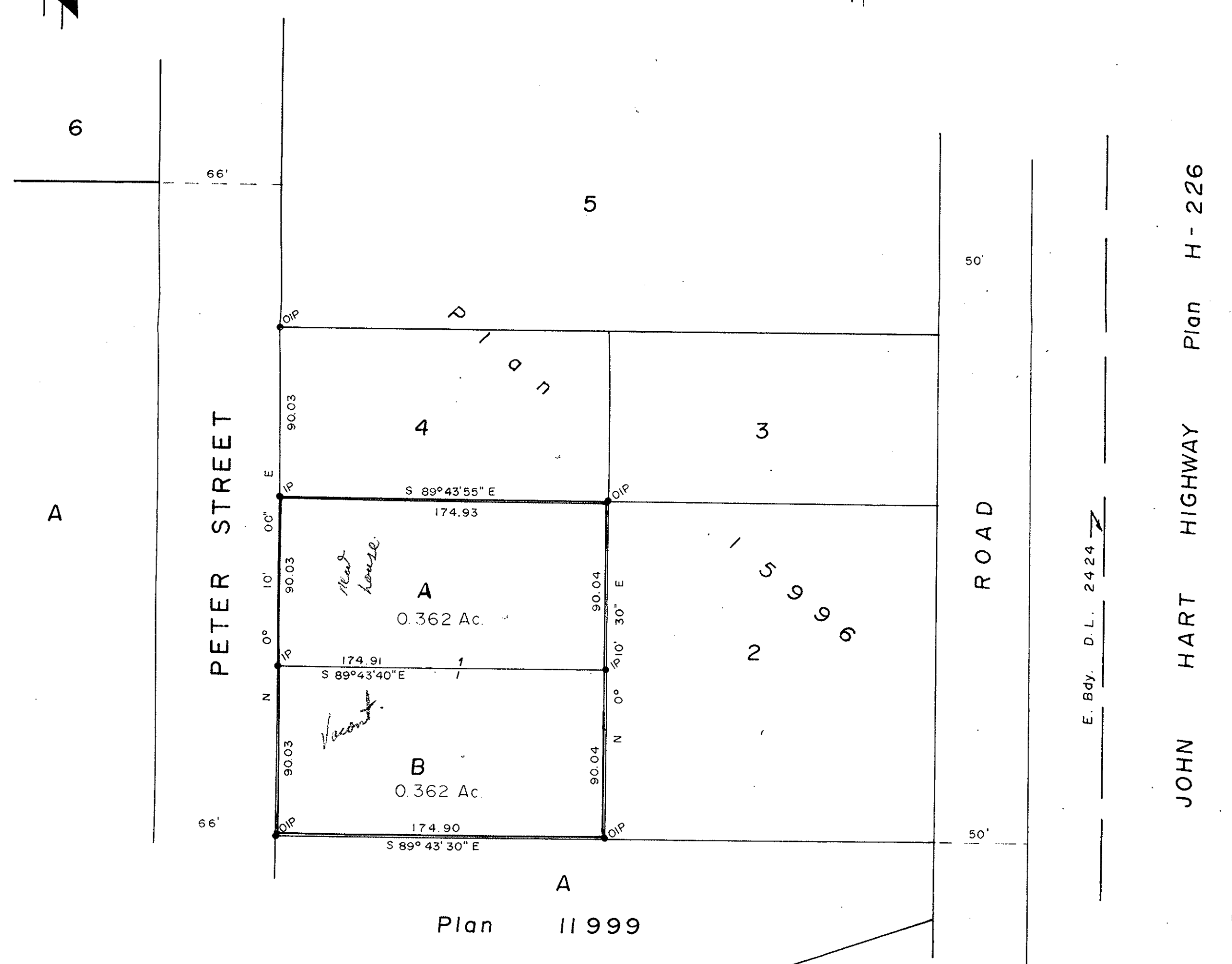
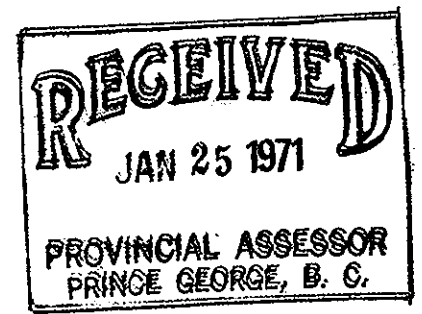
Deposited in the Land Registry Office  
at Prince George on the 15 day of JANUARY 1971.

T.W. CARLOW  
Registrar

# PLAN OF SUBDIVISION OF LOT 1, PLAN 15996, OF THE NORTHEAST 1/4 DISTRICT LOT 2424, CARIBOO DISTRICT.

SCALE: 1" = 50'

UMS  
7/22/71.



Bearings are astronomic and are derived from  
West Boundary of Lots 1 and 4, Plan 15996  
shown as N 0° 10' 00" E.

- ⊙ P.con. .... Standard Concrete Post.
- ⊙ P.Rock. .... Standard Rock Post.
- P.P. .... Standard Pipe Post.
- I.P. .... Standard Iron Post.
- P. .... Wooden Post.
- L.P. .... Lead Plug.
- ..... Denoting "Old"
- WT. .... Denoting "Witness"

I, V. BARTELL of the City of Prince George  
British Columbia Land Surveyor, make oath and  
say that I was present at and did personally  
superintend the survey represented by this  
plan and that the survey and plan are correct.  
The said survey was completed on  
the 17th day of November, 1970.

*V. Bartell*

Sworn before me at Prince George  
this 18 day of November 1970.

*Jennie Wilson*  
A commissioner for taking affidavits  
for British Columbia.

Approved under the Land Registry Act  
on the 16 day of December 1970

*W. Brody*  
Approving Officer

This plan lies within the Fraser -  
Fort George Regional District.

Owner *J. B. Loree*

Witness *A. B. Turner*

Plan 11999

McWilliam—Whyte—Goble & Associates  
B.C. LAND SURVEYORS  
PRINCE GEORGE — KAMLOOPS  
REF No 70198