

PLAN OF SUBDIVISION OF PARTS OF
 LOT A, PLAN 9004, LOT A, PLAN 8611,
 LOT A, PLAN 16563, AND LOT 221, PLAN 16269
DISTRICT LOT 753
 CARIBOO DISTRICT - BRITISH COLUMBIA

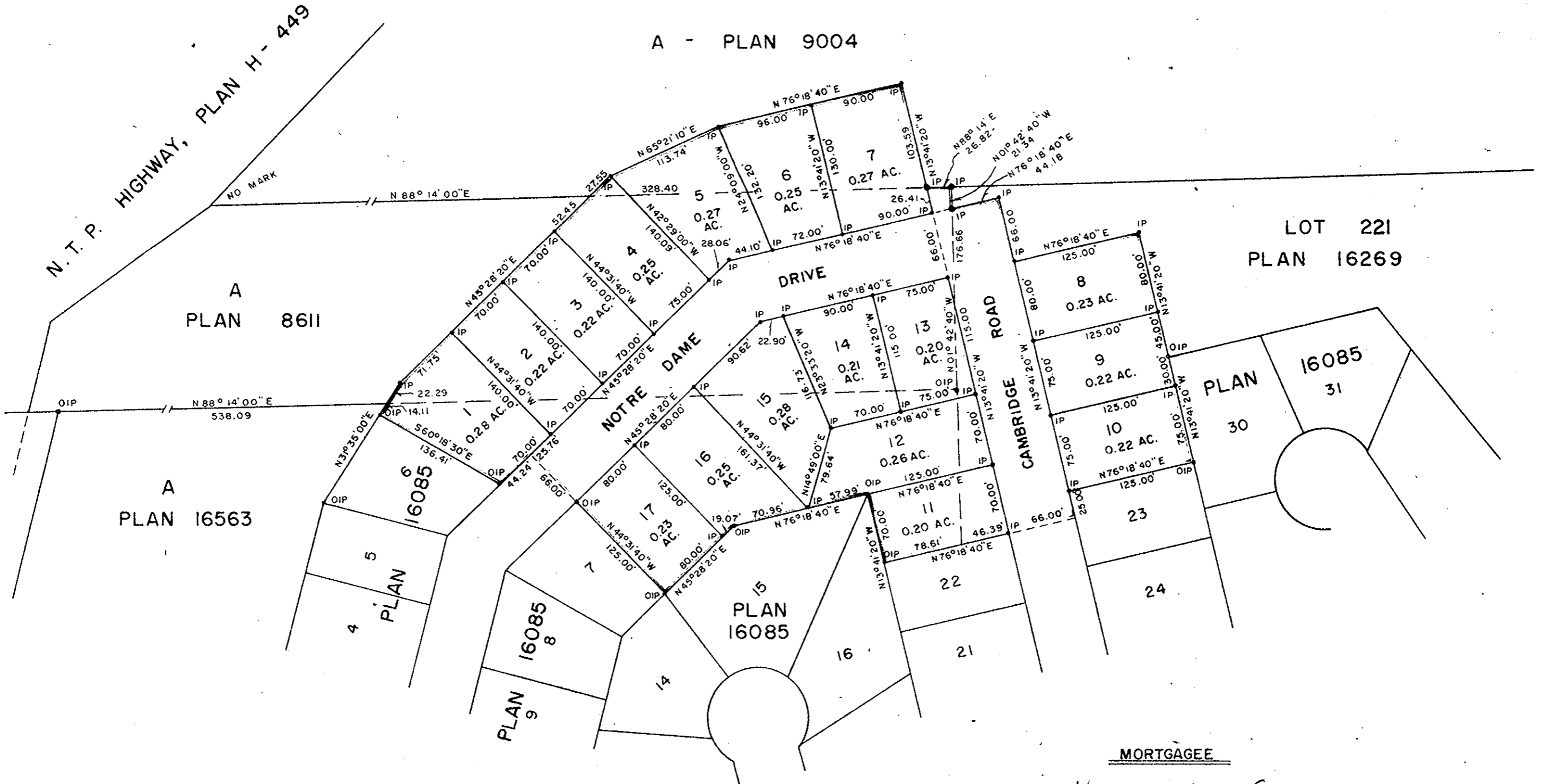
PLAN N^o **19106**
 Deposited in the Land Registry
 Office at Prince George, B.C. this
 14th day of JANUARY, 1971

For the Deputy Registrar
 Registrar

SCALE: 1" = 100'

NOTE: Bearings are astronomic, derived from the
 East boundary of Lot 30, Plan 16085.

LEGEND: • OIP denotes old iron pin found.
 • IP denotes iron pin set.



I, DONALD A. DUFFY of the City of Prince George,
 a British Columbia Land Surveyor, make oath and say
 that I was present at and did personally superintend
 the survey represented by this plan and that the survey
 and plan are correct. The said survey was completed
 on the 30th day of JUNE, 1970

[Signature]
 B.C.L.S.

Sworn before me this 30th
 day of SEPTEMBER, 1970

[Signature]
 A Commissioner for taking Affidavits
 for British Columbia.

PRINCE GEORGE COLLEGE LANDS LTD.

[Signature]
 Secretary & Director

Approved under the Land Registry Act
 this 23rd day of September, 1970

[Signature]
 Approving Officer, Dept. of Highways.

This plan lies within the Fraser-Fort George
 Regional District.

W. D. USHER & ASSOCIATES
 LAND SURVEYORS
 PRINCE GEORGE B.C.
 C.Z. 56 3262