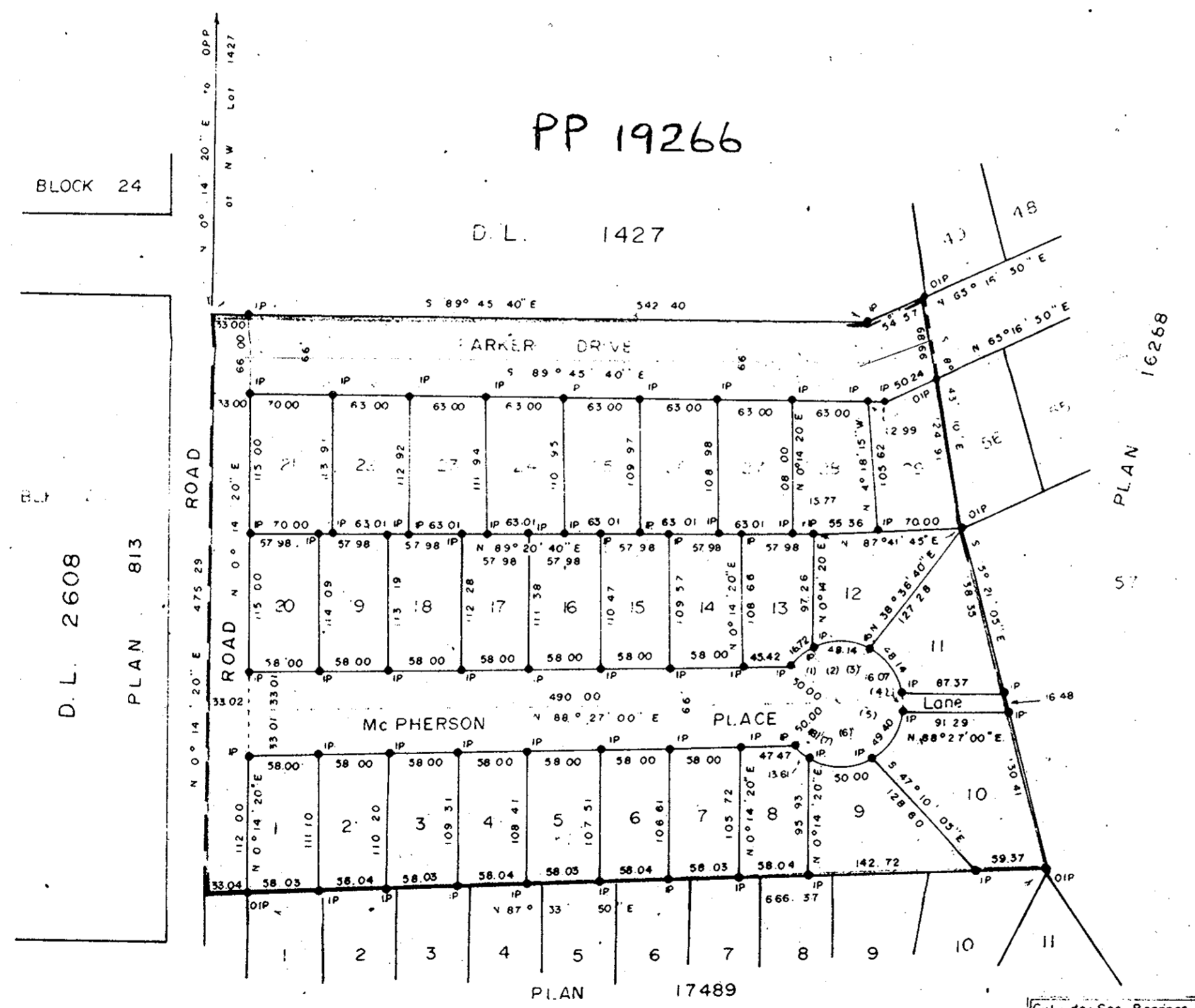


PLAN No 19099
 Deposited in the Land Registry Office
 Prince George on the 8 day of JANUARY 1971

J. S. Brown
 ACT. DEPUTY Registrar

PLAN OF SUBDIVISION OF PART OF
 DISTRICT LOT 1427,
 CARIBOO DISTRICT.
 Scale : 1" = 100'



AREA WITHIN RED OUTLINE = 6.791 AC.

Cul-de-Sac Bearings

(1) N 50°15'00" W
(2) N 31°05'01" W
(3) N 24°04'47" E
(4) N 79°14'35" E
(5) S 82°20'35" E
(6) S 25°44'19" E
(7) S 31°33'26" W
(8) S 47°09'00" W

Bearings are astronomic and are derived from
 T.P. of NW Lot Plan 17489 and OPP of
 NW D.L. 1427 shown as N 0°14'20" E

- PCOP Standard Concrete Corner
- P Rock Standard Rock Post
- PP Standard Pipe Post
- IP Standard Iron Post
- WP Wooden Post
- L.P. Lead Plug
- O Denoting "Old"
- WT Denoting "Witness"

A Deed Book in the City of Prince George
 ...
 The said survey was completed on
 the 14th day of May 1969

J. Hamilton

Sworn before me at Prince George BC
 this 29 day of September 1970

J. S. Brown
 A Commissioner for taking oaths
 for British Columbia

Approved under the Land Registry Act
 on the 30th day of SEPT. 1970

C. E. Olot
 Approving Officer
 City of Prince George

Reapproved Jan 7, 1971
C. E. Olot

This plan lies within the Fraser -
 Fort George Regional District

HIGHLAND RESOURCES LTD.

per

JENTURES SADMIAH NTU

per

McWilliam—Whyte—Goble & Associates
B.C. LAND SURVEYORS
PRINCE GEORGE — KAMLOOPS
REF No: 68275