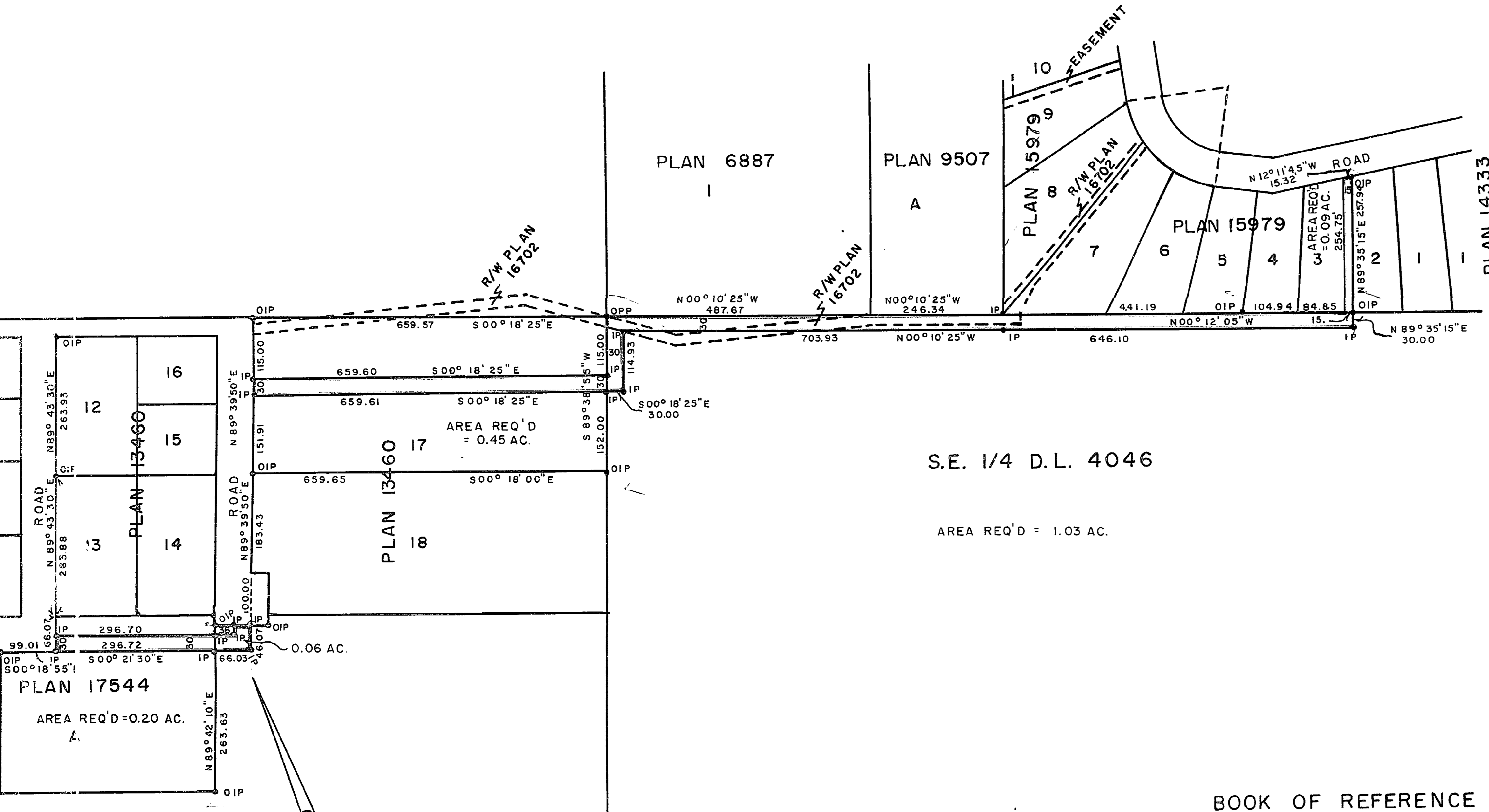


S.W. 1/4 D.L. 4039

PLAN No **19075**
 Deposited in the Land Registry
 Office at Prince George, B.C. this
 18. day of December, 1970.

E. J. Dawson
 Acting Deputy Registrar



PLAN OF RIGHT-OF-WAY THROUGH
 DISTRICT LOTS 4047, 4046 & 4039
 CARIBOO DISTRICT, BRITISH COLUMBIA

SCALE: 1" = 200'

NOTE: Bearings are astronomic, derived from the West Boundary of Lot 1, Plan 15530, District Lot 4047.

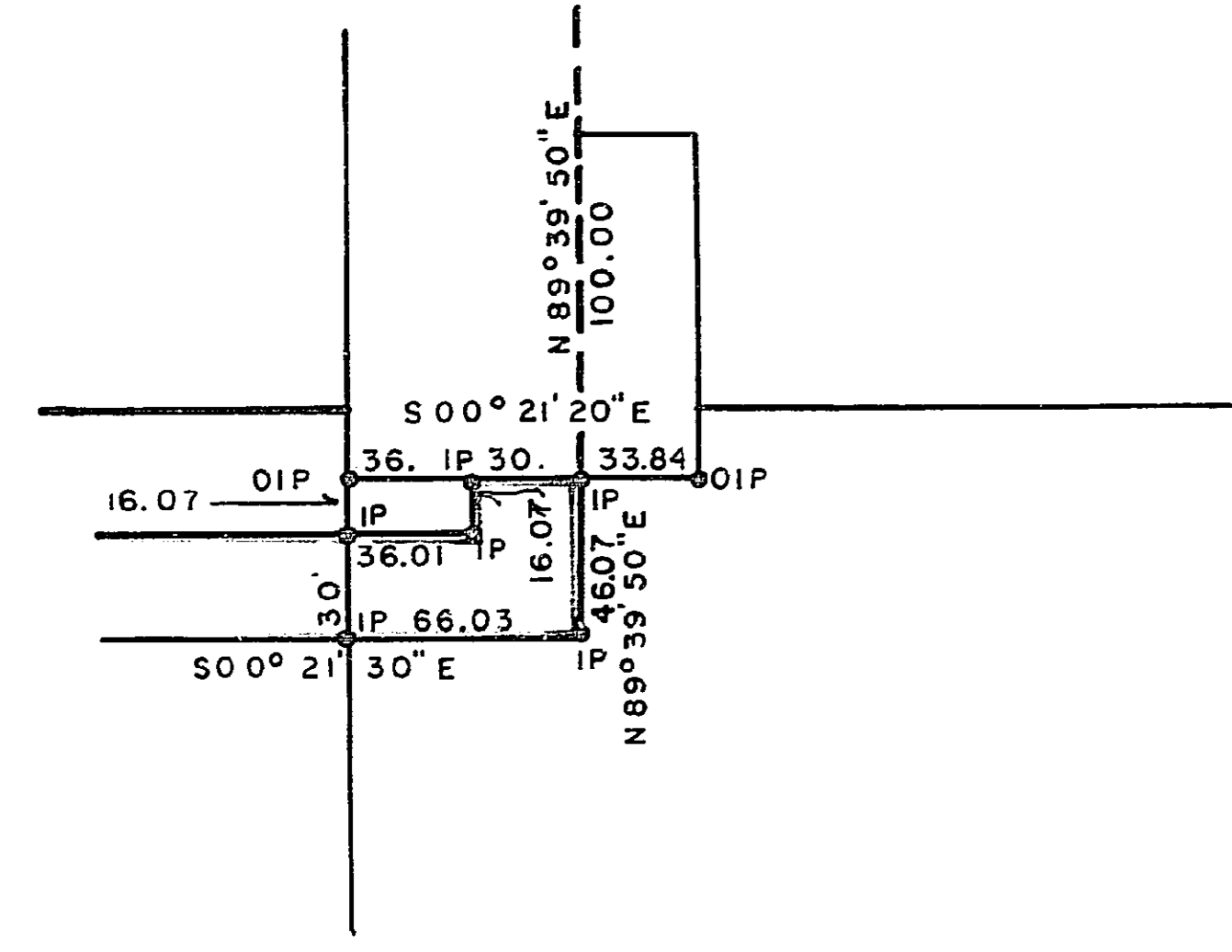
LEGEND:
 • OIP denotes an old iron pin found.
 • IP denotes an iron pin set.
 • OPP denotes an old pipe post found.

S.E. 1/4 D.L. 4046
 AREA REQ'D = 1.03 AC.

BOOK OF REFERENCE

PARCEL	AREA REQUIRED
S.E. 1/4 DISTRICT LOT 4047	0.30 ACRE
N.E. 1/4 DISTRICT LOT 4046	1.33 ACRES
LOT 11, PLAN 11234, DISTRICT LOT 4046	0.09 ACRE
LOT A, PLAN 17544, DISTRICT LOT 4046	0.20 ACRE
LOT 17, PLAN 13460, DISTRICT LOT, 4046	0.45 ACRE
S.E. 1/4 DISTRICT LOT 4046	1.03 ACRES
LOT 3, PLAN 15979, DISTRICT LOT 4039	0.09 ACRE

DETAIL
 SCALE 1" = 100'



I, DONALD A. DUFFY of the City of Prince George a British Columbia Land Surveyor, make oath and say that I was present at and did personally superintend the survey represented by this plan and that the survey and plan are correct. The said survey was completed on the 29th day of OCTOBER, 1970.

D. A. Duffy
 B.C.L.S.

This plan lies with-in the Fraser-Fort George Regional District.

Sworn before me this 20TH day of NOVEMBER, 1970.

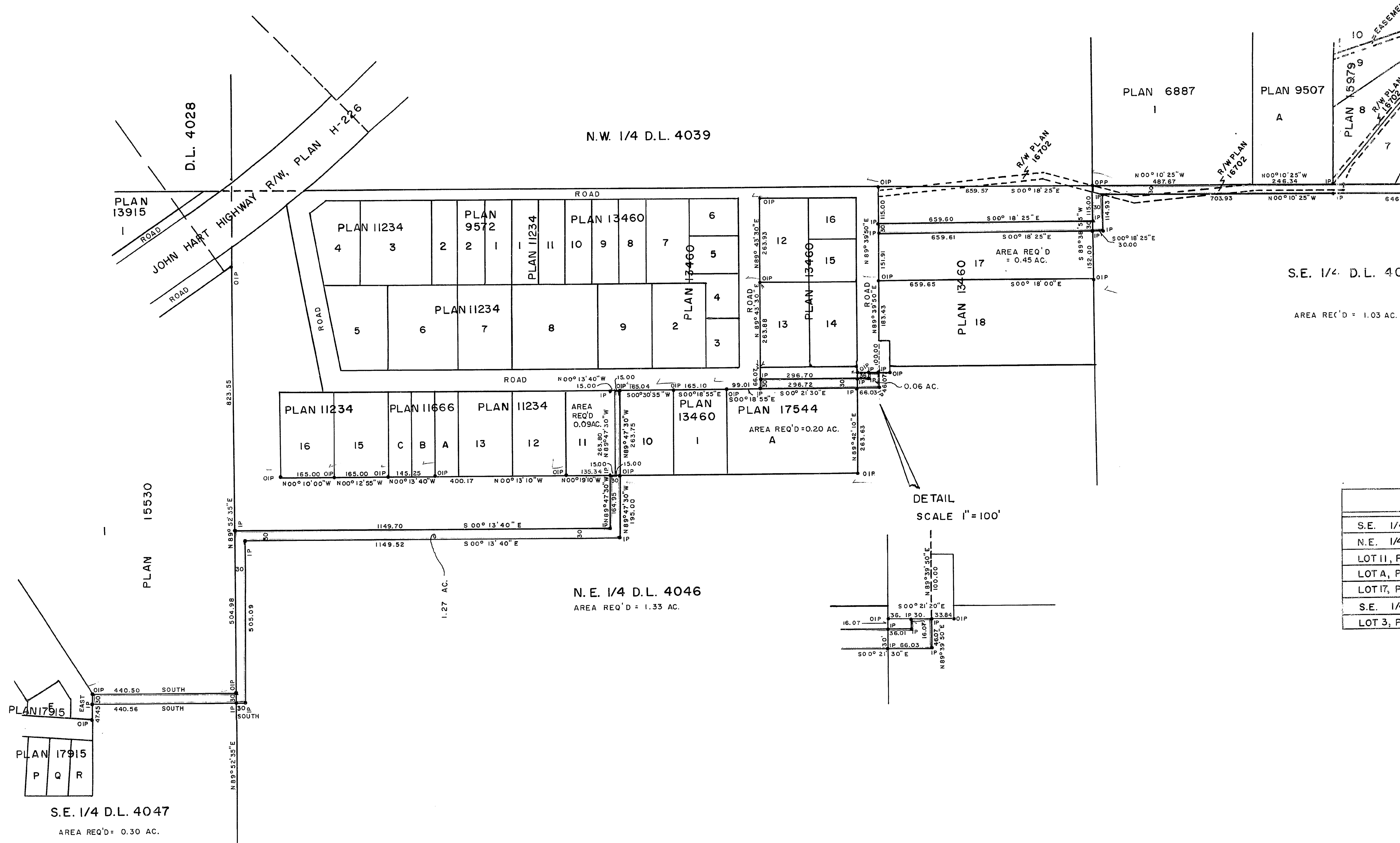
W. D. Usher
 A Commissioner for taking Affidavits for British Columbia.

S.W. 1/4 D.L. 4039

N.W. 1/4 D.L. 4039

N.E. 1/4 D.L. 4046
AREA REQ'D = 1.33 AC.

S.E. 1/4 D.L. 4047
AREA REQ'D = 0.30 AC.



S.E. 1/4 D.L. 40
AREA REQ'D = 1.03 AC.

S.E. 1/4
N.E. 1/4
LOT 11, P
LOT A, P
LOT 17, P
S.E. 1/4
LOT 3, P

DETAIL
SCALE 1"=100'

