

PLAN OF SUBDIVISION OF PART OF  
N.E. 1/4 DISTRICT LOT 818  
CARIBOO DISTRICT, BRITISH COLUMBIA

SCALE: 1" = 200'

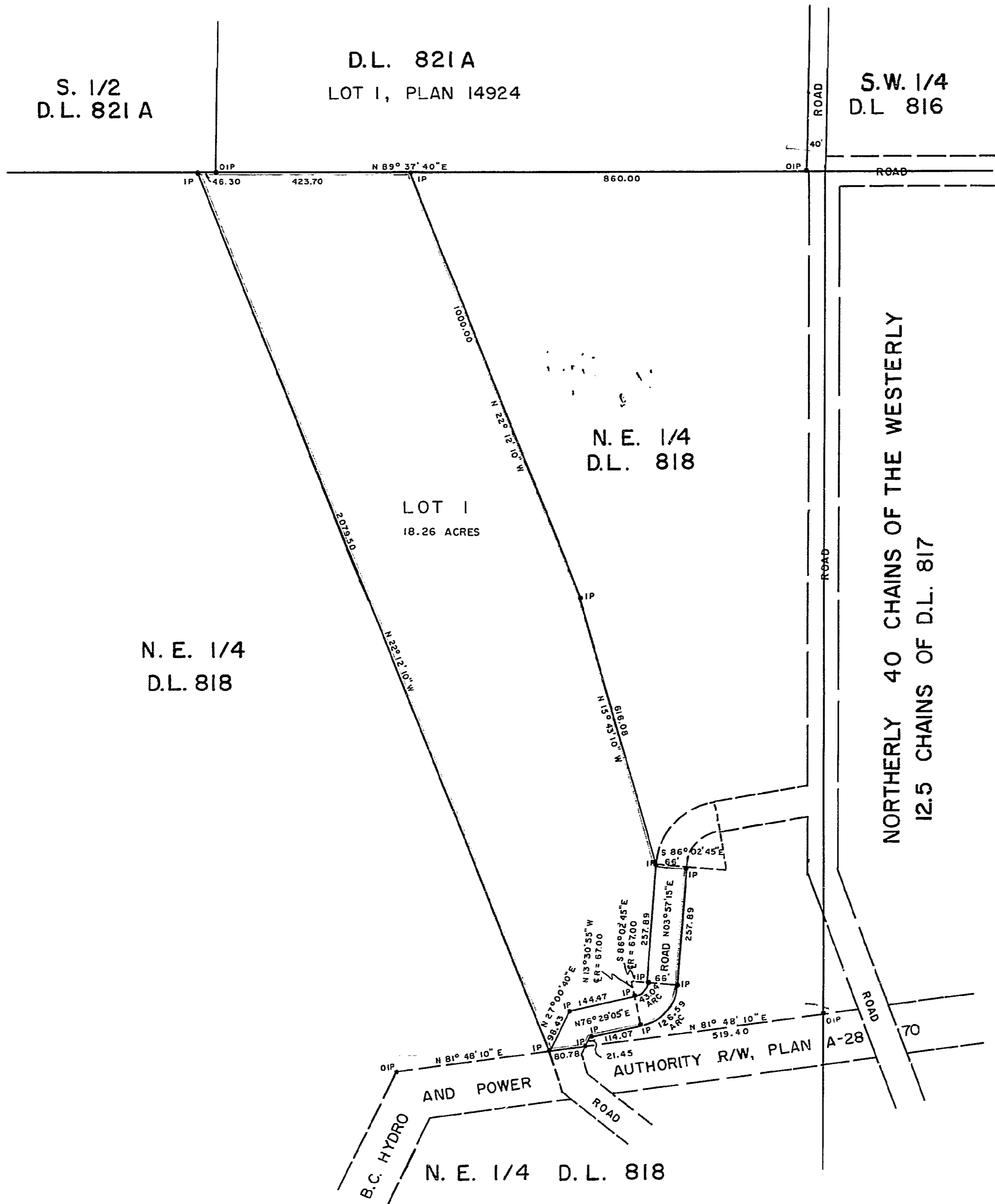
NOTE: Bearings are astronomic, derived from the South  
boundary of Lot 1, Plan 14924 D.L. 821A.

LEGEND: • OIP denotes an old iron pin found.  
• IP denotes an iron pin set.



PLAN No 19001  
Deposited in the Land Registry  
Office at Prince George, B.C. this  
17 day of NOV, 1970

*[Signature]*  
Registrar



I, DONALD A. DUFFY of the City of Prince George,  
a British Columbia Land Surveyor, make oath and say  
that I was present at and did personally superintend  
the survey represented by this plan and that the survey  
and plan are correct. The said survey was completed  
on the 14TH day of SEPT, 1970

*[Signature]*  
B.C.L.S.

Sworn before me this 16TH  
day of SEPT, 1970.

*[Signature]*  
A Commissioner for taking Affidavits  
for British Columbia.

Owner *A. Lordinis*

Witness *[Signature]*

INLAND NATURAL GAS CO. LTD.

*[Signature]*  
PRESIDENT

*[Signature]*  
SECRETARY

Approved under the Land Registry Act  
this 14 day of October, 1970

*[Signature]*  
Approving Officer, Dept. of Highways.

This plan lies within the Fraser-Fort George  
Regional District.

W D USHER & ASSOCIATES  
LAND SURVEYORS  
PRINCE GEORGE - B.C.  
CN 75 3210

