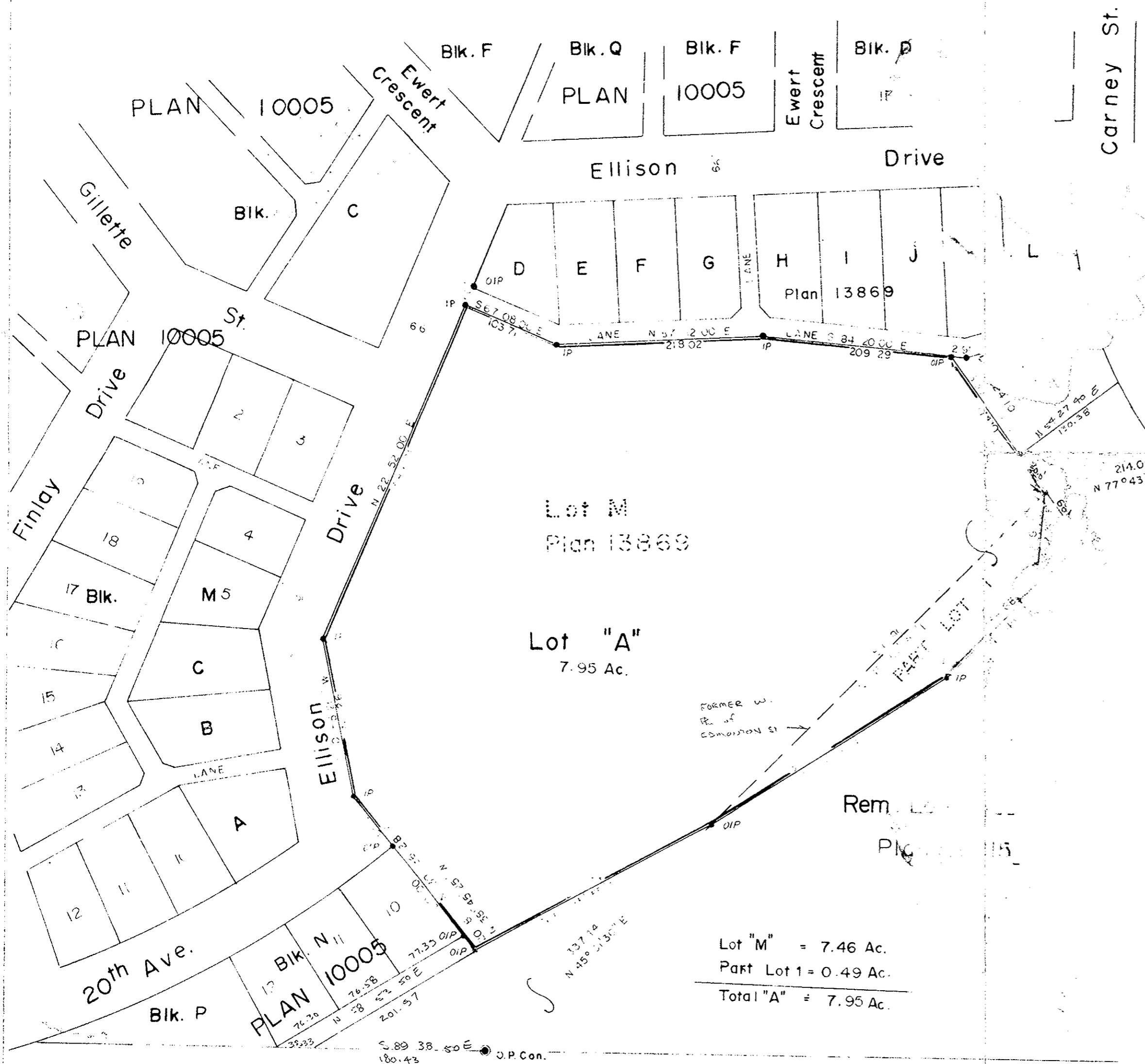


Plan of Subdivision of Lot M, Plan 13869
 and Part Lot 1, Plan 18815
 District Lot 936, Cariboo District
 Scale 1" = 100'

PLAN No 18994
 Deposited in the Land Registry Office
 at PR. GEORGE on the 12 day of NOV. 1970

[Signature]
 Registrar

Copy to
 Engineering
 Jan 1/70
[Signature]



Bearings are astronomic and are derived from Southeast by Parcel M, Plan 13869 and shown as N 45° 0' 30".

- ⊙ Pcon Standard Concrete Post
- ⊙ P Rock Standard Rock Post
- PP Standard Pipe Post
- P Standard Iron Post
- P Wooden Post
- L P Lead Plug
- O Denoting "Old"
- W Denoting "Witness"

I, *[Signature]*, Surveyor, make oath and solemnly swear that I did personally conduct the survey represented by this plan and that the survey and plan are correct. The said survey was completed on the 11 day of September 1970.

[Signature]
 Vicar, District

Sworn before me at Prince George this 18 day of September 1970.

Approved under the Land Registry Act on the 9th day of OCT. 1970

[Signature]
 Approving Officer
 City of Prince George

The Corporation of the City of Prince George, B.C.
[Signature] Mayor
[Signature] City Clerk

[Signature]
 Chairman
 Witness *[Signature]*

THE BOARD OF SCHOOL TRUSTEES
 SCHOOL DISTRICT NO. 67 PRINCE GEORGE

Lot "M" = 7.46 Ac.
 Part Lot 1 = 0.49 Ac.
 Total "A" = 7.95 Ac.

McWilliam-Whyte-Goble & Associates
 B.C. LAND SURVEYORS
 PRINCE GEORGE — KAMLOOPS
 REF No 70046 - A