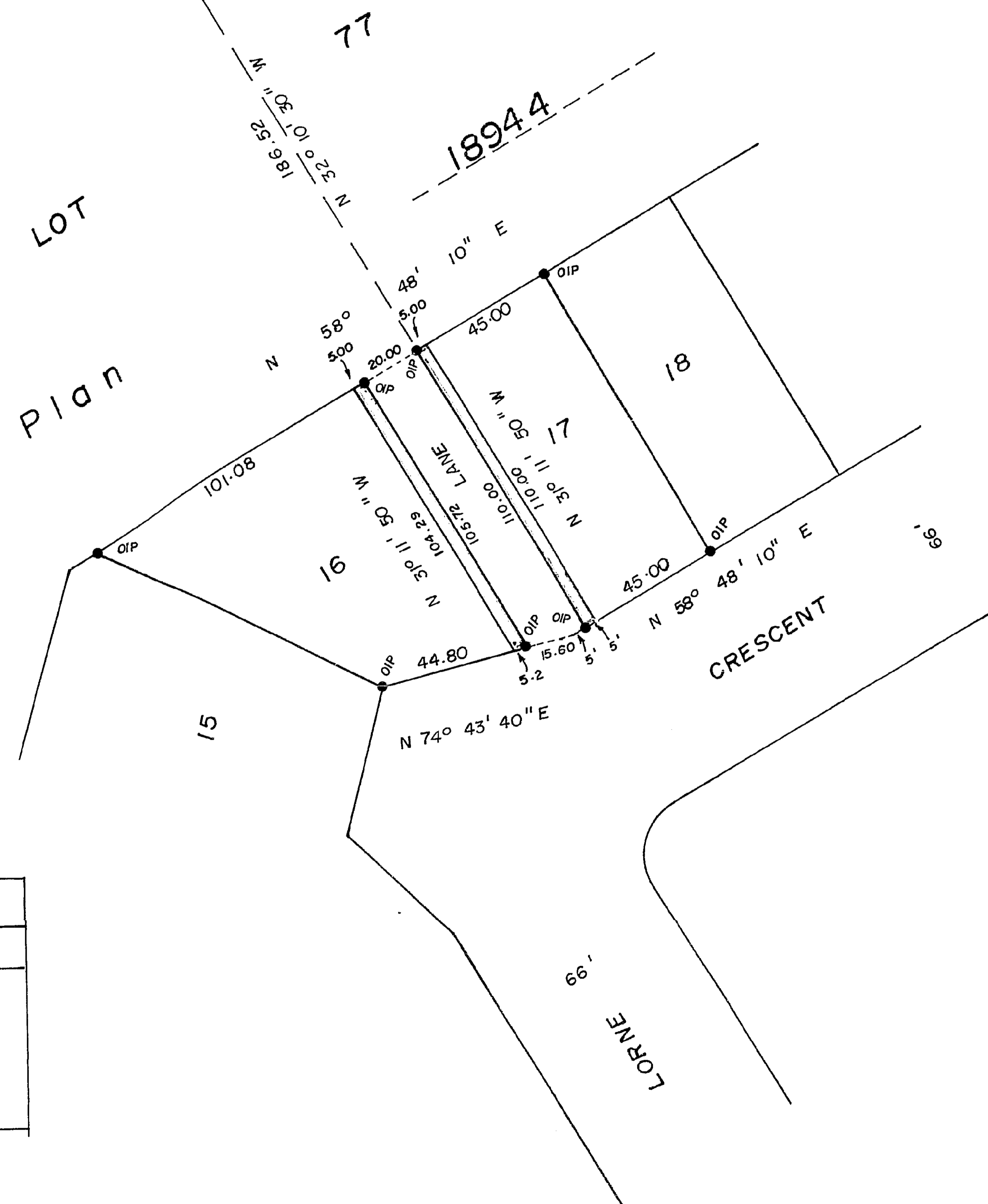
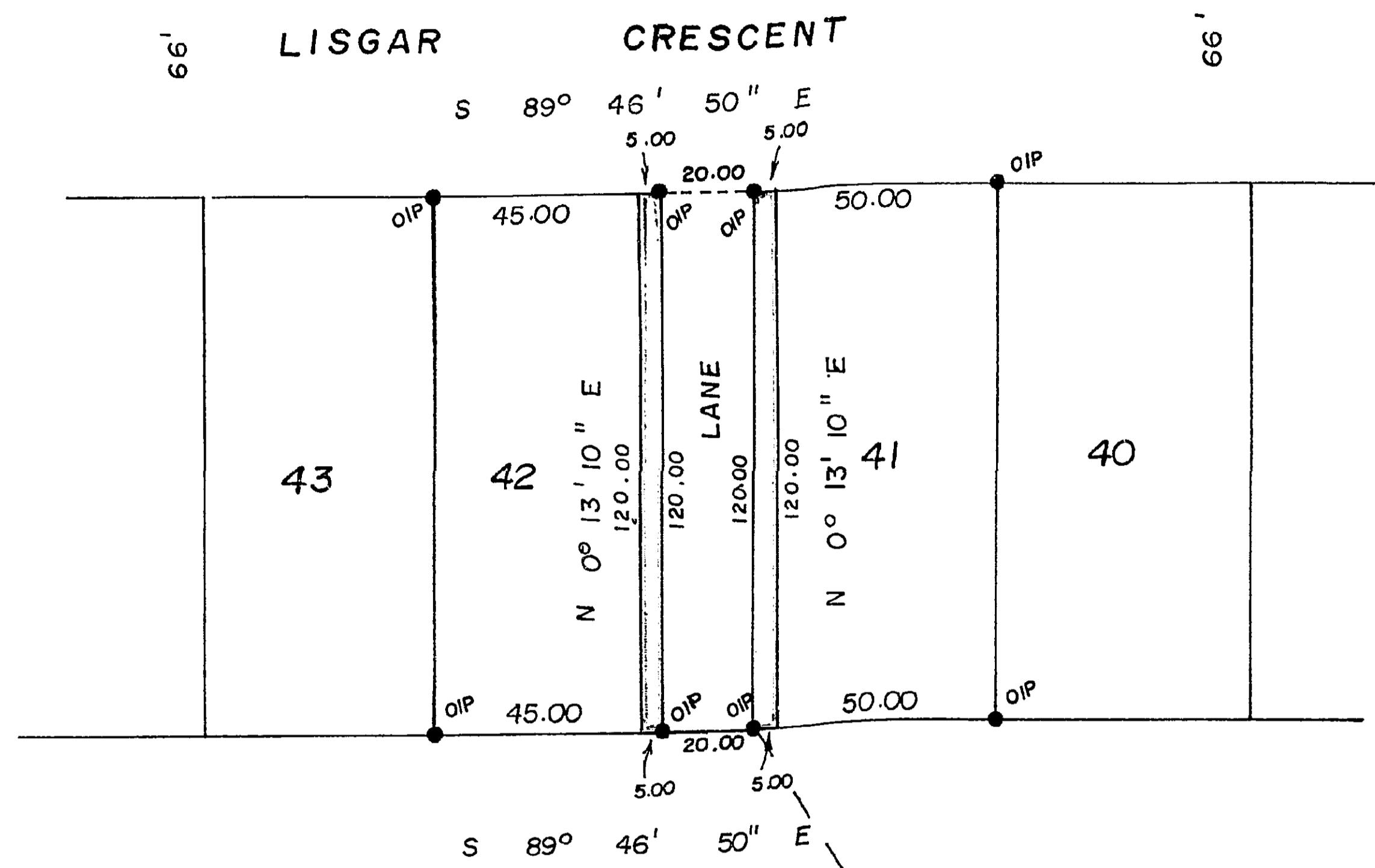


**PLAN No: 18947**

Deposited in the Land Registry Office  
at PRINCE GEORGE on the 23 day of OCT. 1970

*[Signature]*  
Registrar



BOOK OF REFERENCE	
PLAN NO:	18944
LOT 16	525 sq. ft.
LOT 17	550 sq. ft.
LOT 41	600 sq. ft.
LOT 42	600 sq. ft.

This plan lies within the Fraser  
Fort George Regional District

<b>CITY OF PRINCE GEORGE</b>	
<b>PLAN OF RIGHT OF WAY THROUGH LOTS 16, 17, 41 AND 42, PLAN 18944, DISTRICT LOT 8172, CARIBOO DISTRICT</b>	
SCALE : 1" = 50'	
BEARINGS ARE ASTRONOMIC AND ARE DERIVED FROM PLAN 18944	
● O.I.P. --- Denotes Old Iron Post found	
I, V. BARTELL of the City of Prince George British Columbia Land Surveyor, make oath and say that I was present at and did personally superintend the survey represented by this plan and that the survey and plan are correct  The said survey was completed on the 23 day of October 1970  <i>[Signature]</i> B.C.L.S.	Sworn before me at Prince George this 23 day of October 1970  <i>[Signature]</i> A Commissioner for taking affidavits for British Columbia
Mc.William - Whyte - Goble & Associates B.C. LAND SURVEYORS PRINCE GEORGE — KAMLOOPS	<b>REF. NO: 70100-9</b>