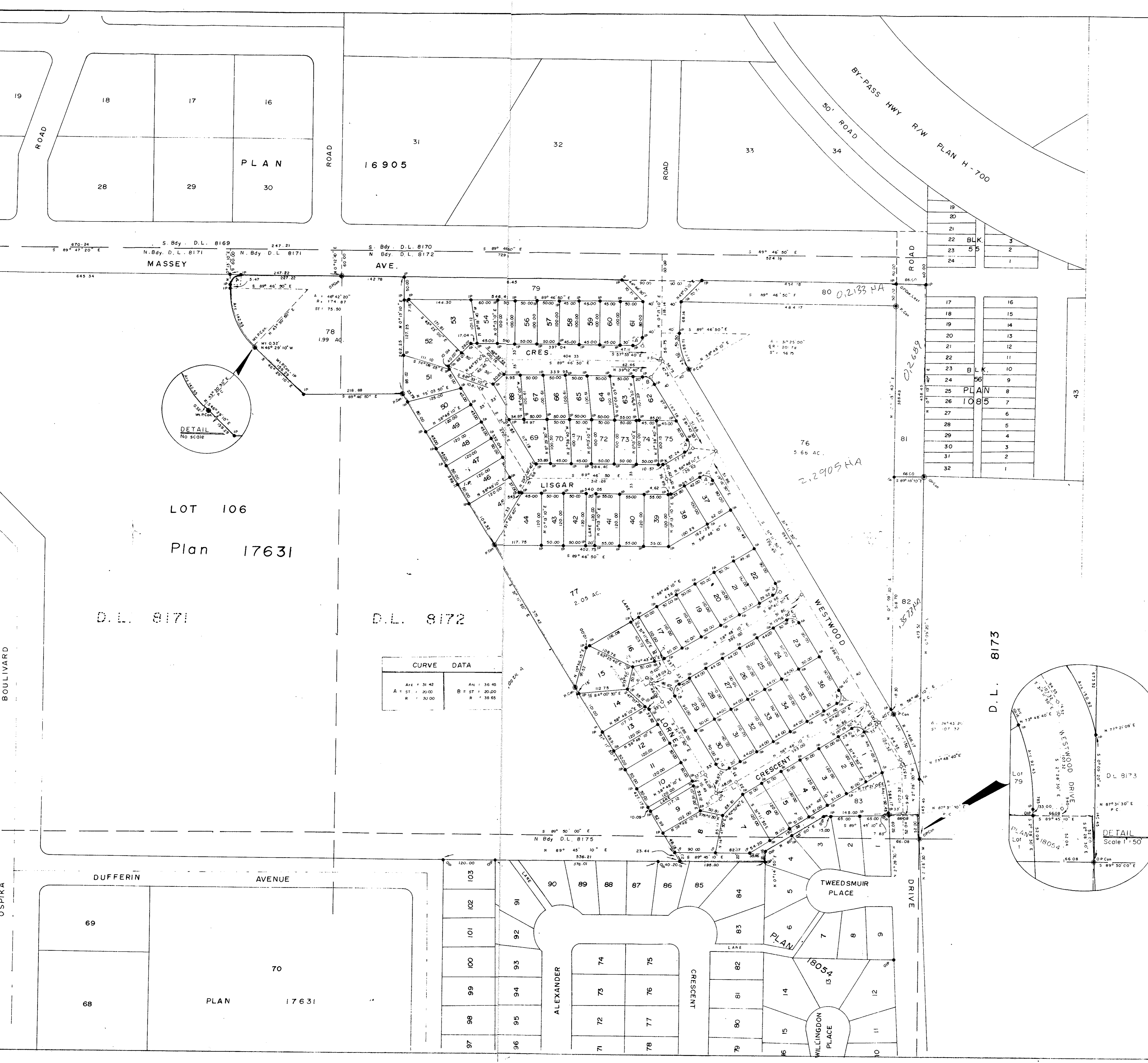


*[Signature]*  
 Registrar

PLAN OF SUBDIVISION OF  
 PART OF LOT 106, PLAN 17631,  
 DISTRICT LOTS 8171, 8172 & 8173  
Cariboo District

SCALE: 1" = 100'



I, [Signature], of the City of Prince George  
 British Columbia Land Surveyor make oath and  
 say that I was present at and did personally  
 superintend the survey represented by this  
 plan and that the survey and plan are correct.  
 The said survey was completed on  
 the 23rd day of October, 1970.  
*[Signature]*  
 B.C.L.S.

Sworn before me at Prince George  
 this 23rd day of October 1970.

*[Signature]*  
 A commissioner for taking affidavits  
 for British Columbia

PLAN EXCEPTIONS  
 18054

- Bearings are astronomic and are derived from  
 Plan 17631.
- ⊙ P Con Standard Concrete Post
  - IP Standard Iron Post
  - PP Standard Pipe Post
  - Denoting "Old"
  - Wt Denotes Witness

The Seal of the Corporation of the  
 City of Prince George was affixed  
 hereto in the presence of

Approved under the Land Registry Act  
 on the 23rd day of Oct. 1970

Mayor *[Signature]*

*[Signature]*  
 Approving Officer  
 City of Prince George

City Clerk *[Signature]*

THIS PLAN LIES WITHIN THE FRASER  
 FORT GEORGE REGIONAL DISTRICT

McWilliam - Whyte - Goble & Associates  
 B. C. LAND SURVEYORS  
 PRINCE GEORGE KAMLOOPS