

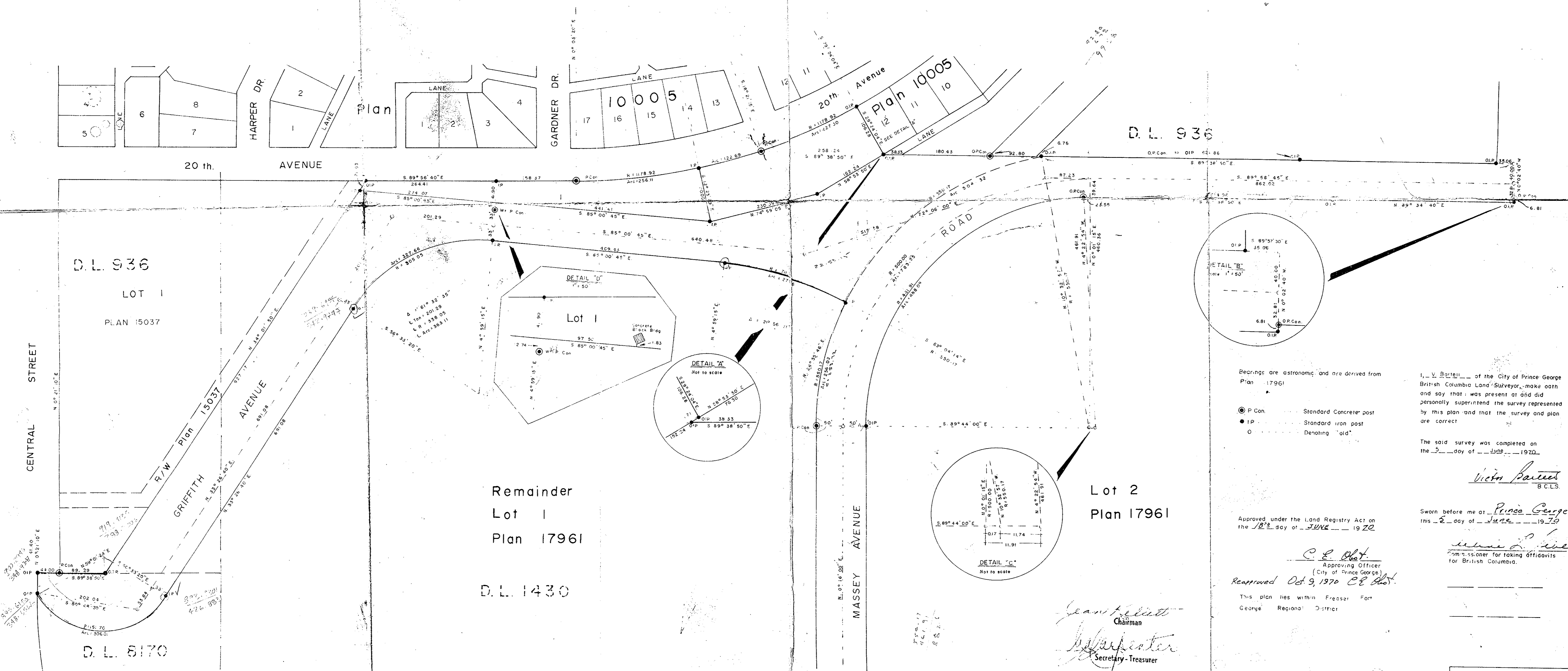
[Signature]
Registrar

Plan of Subdivision of Part of Lot 1, Plan 17961 District Lots 936 & 1430 & 8170 Cariboo District

Scale : 1" = 100'



18915
18915
18915
18915
18915
18915
18915
18915
18915
18915



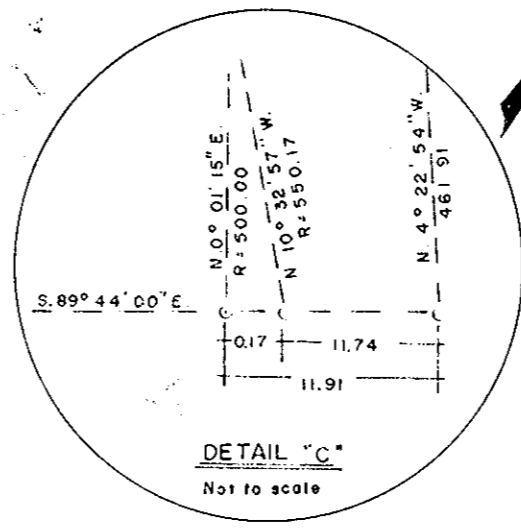
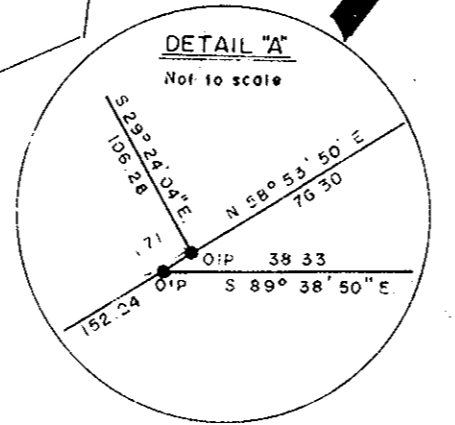
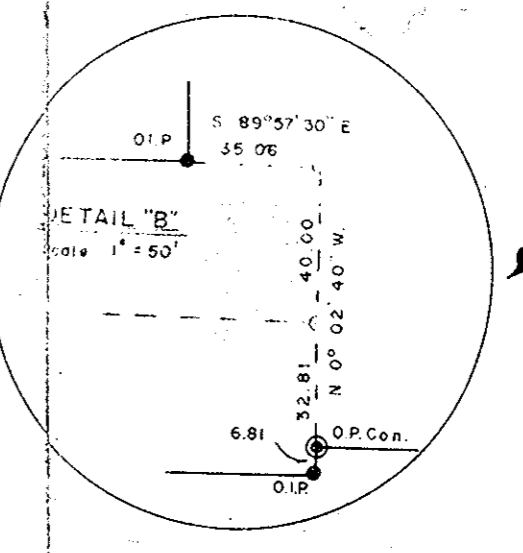
D.L. 936
LOT 1
PLAN 15037

Remainder
Lot 1
Plan 17961

D.L. 1430

Lot 2
Plan 17961

D.L. 8170



Bearings are astronomic and are derived from Plan 17961.
● P Con. Standard Concrete post
● IP Standard iron post
○ Denoting "old"

I, V. Barton of the City of Prince George British Columbia Land Surveyor, make oath and say that I was present at and did personally superintend the survey represented by this plan and that the survey and plan are correct.

The said survey was completed on the 5 day of June 1970.

Victor Barton
B.C.L.S.

Approved under the Land Registry Act on this 12th day of JUNE 1970

Sworn before me at Prince George this 8 day of June 1970

C. E. Olet
Approving Officer
(City of Prince George)
Reapproved Oct. 9, 1970 *C. E. Olet*

[Signature]
Commissioner for taking affidavits for British Columbia.

This plan lies within Fraser Fort George Regional District

Leann Bellotti
Chairman
[Signature]
Secretary - Treasurer