

Plotted (FZ)(GZ)

PLAN No 18899
 Deposited in the Land Registry Office
 at PR. GEORGE on the 2nd day of OCTOBER 1970

[Signature]
 Registrar

PLAN OF SUBDIVISION OF
 REMAINDER OF S. 1/2 OF N.E. 1/4
 DISTRICT LOT 2426,
 CARIBOO DISTRICT

Scale: 1" = 400'

Exceptions to Title - Plan 17819

S.W. 1/4
 D.L. 2427

S.E. 1/4 D.L. 2427

D.L. 2430

LOT 1
 Plan H537

N. 1/2 OF N.E. 1/4 D.L. 2426,

N.W. 1/4
 D.L. 2426

N.W. 1/4
 D.L. 2431

LOT 1
 19.5 Ac

LOT 2
 19.5 Ac

LOT "A", Plan 17819

S.E. 1/4 D.L. 2426

S.W. 1/4
 D.L. 2426

S.W. 1/4
 D.L. 2431

N.W. 1/4
 D.L. 2425

N.E. 1/4
 D.L. 2425

Bearings are astronomic and are derived from
 West Boundary N.W. 1/4 D.L. 2431

- ⊙ P.con Standard Concrete Post
- ⊙ P.Rock Standard Rock Post
- PP Standard Pipe Post
- IP Standard Iron Post
- CIP Caped Iron Post
- L.P Lead Plug
- Denoting "Old"
- WT Denoting "Witness"

I, V. BARTELL of the City of Prince George
 British Columbia Land Surveyor, make oath and
 say that I was present at and did personally
 supervise the survey represented by this
 plan and that the survey and plan are correct.
 The said survey was completed on
 the 28th day of August 1970.

[Signature]

Sworn before me at Prince George
 this 8th day of September 1970.

[Signature]
 A Commissioner for taking affidavits
 for British Columbia

Owner *[Signature]*

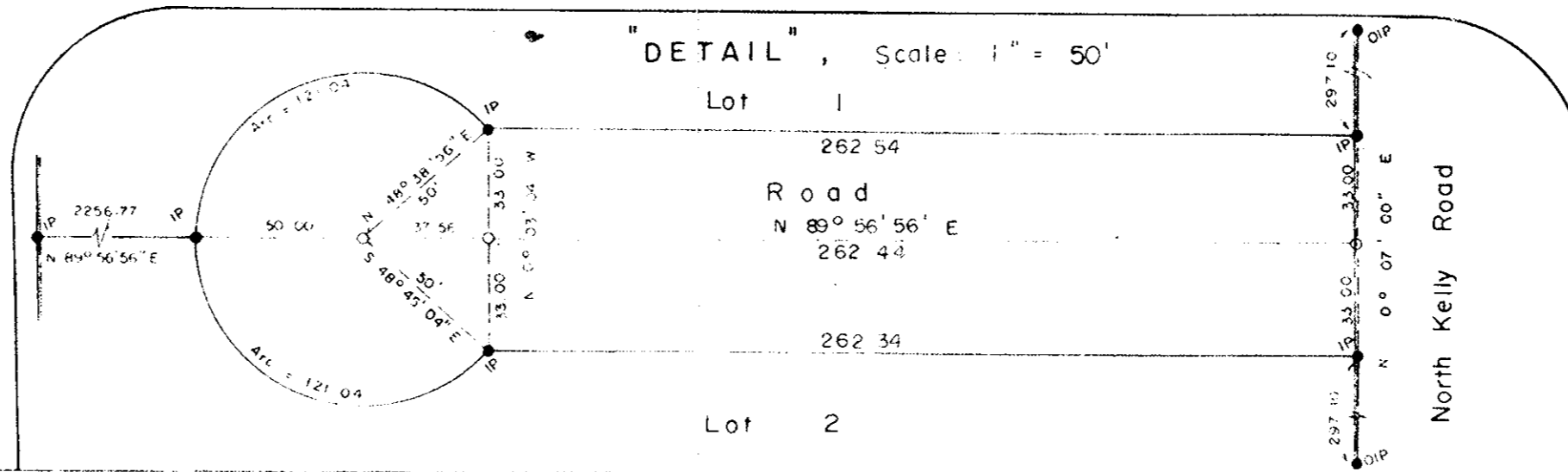
Witness *[Signature]*

Owner *[Signature]*

Witness *[Signature]*

Approved under the Land Registry Act
 on the 1st day of October 1970

[Signature]
 Approving Officer



McWilliam—Whyte—Goble & Associates
 B.C. LAND SURVEYORS
 PRINCE GEORGE — KAMLOOPS
 REF No: 70142