

PLAN OF SUBDIVISION OF PARTS OF
 PARCEL 'A', PLAN 17198 AND LOTS 46 & 47, PLAN 17833
 DISTRICT LOTS 745 & 747
 CARIBOO DISTRICT - BRITISH COLUMBIA

SCALE: 1" = 300'

NOTE: Bearings are astronomic, derived from the east boundary of
 the B.C. Hydro and Power Authority R/W, Plan A - 2889.

LEGEND: • OIP denotes an old iron pin found.
 • IP denotes an iron pin set.

Return to Records.

PLAN N^o 18882
 Deposited in the Land Registry
 Office at Prince George, B.C. this
 28 day of SEPT., 1970

[Signature]
 Registrar

RECEIVED

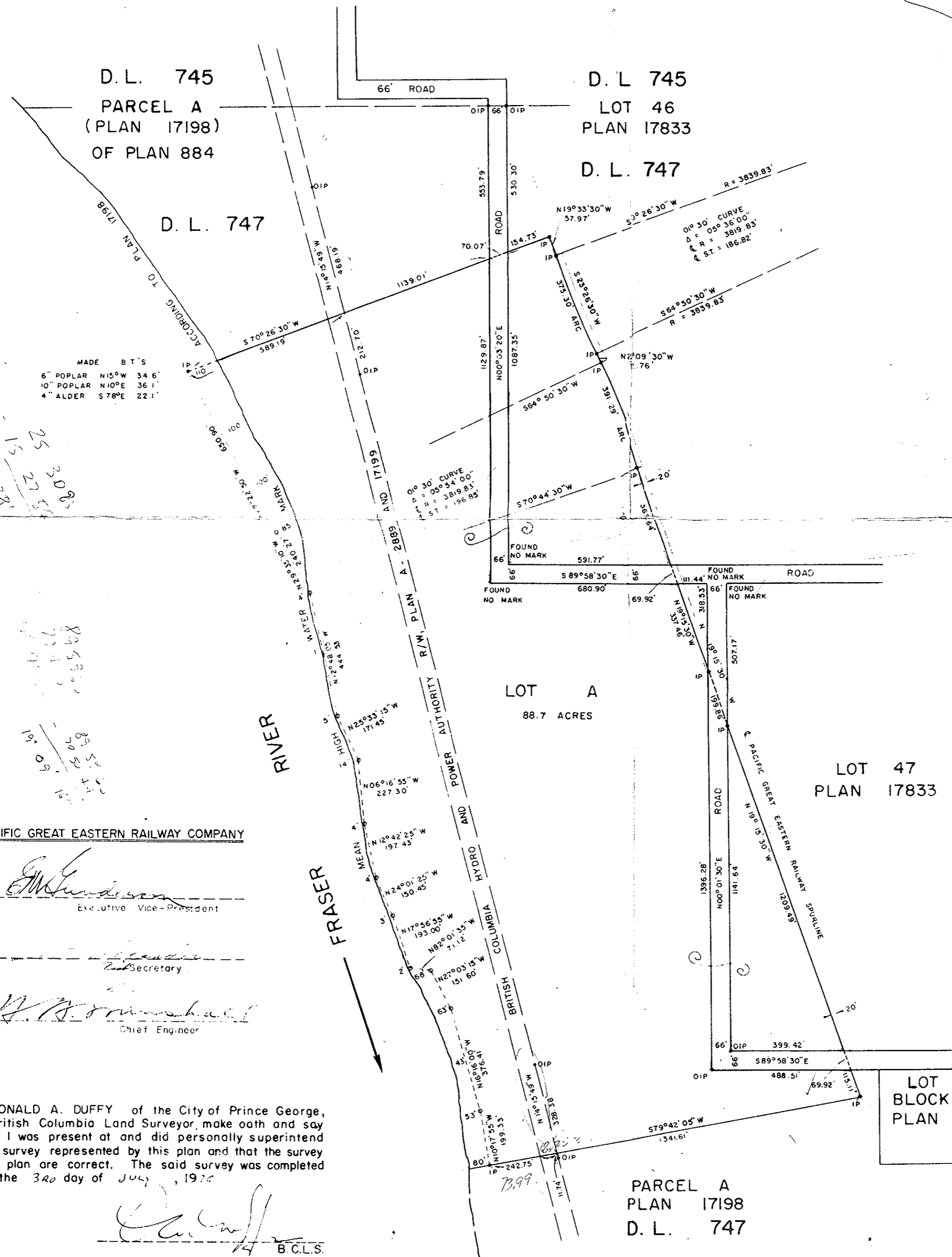
DEC 1 1970

CITY ASSESSOR
 PRINCE GEORGE

25.9.70
15.10.70
13.10.70

25.30.83
15.27.53
13.08.38

82.5.83
77.4.73
19.09.70
85.5.73
70.5.73



PACIFIC GREAT EASTERN RAILWAY COMPANY

[Signature]
 Executive Vice-President

[Signature]
 Secretary

[Signature]
 Chief Engineer

I, DONALD A. DUFFY of the City of Prince George, a British Columbia Land Surveyor, make oath and say that I was present at and did personally superintend the survey represented by this plan and that the survey and plan are correct. The said survey was completed on the 32nd day of July, 1970

[Signature]
 B.C.L.S.

Sworn before me this 32nd
 day of July, 1970

[Signature]
 A Commissioner for taking Affidavits
 for British Columbia.

This plan need not comply with clause (b) of section 86 of the Land Registry Act. Dated this 22nd day of Sept., 1970.

[Signature]
 Assistant Deputy Attorney General.

Approved under the Land Registry Act this 8th day of SEPT., 1970

[Signature]
 Approving Officer, City of Prince George.

This plan lies within the Fraser-Fort George Regional District.

W. D. USHER & ASSOCIATES
 LAND SURVEYORS
 PRINCE GEORGE - B.C.
 DN 60-64 3177