

RECEIVED

OCT 15 1970

CITY ASSESSOR
PRINCE GEORGE

PLAN N^o 18851

Deposited in the Land Registry
Office at Prince George, B.C. this
3rd day of SEPT., 1970

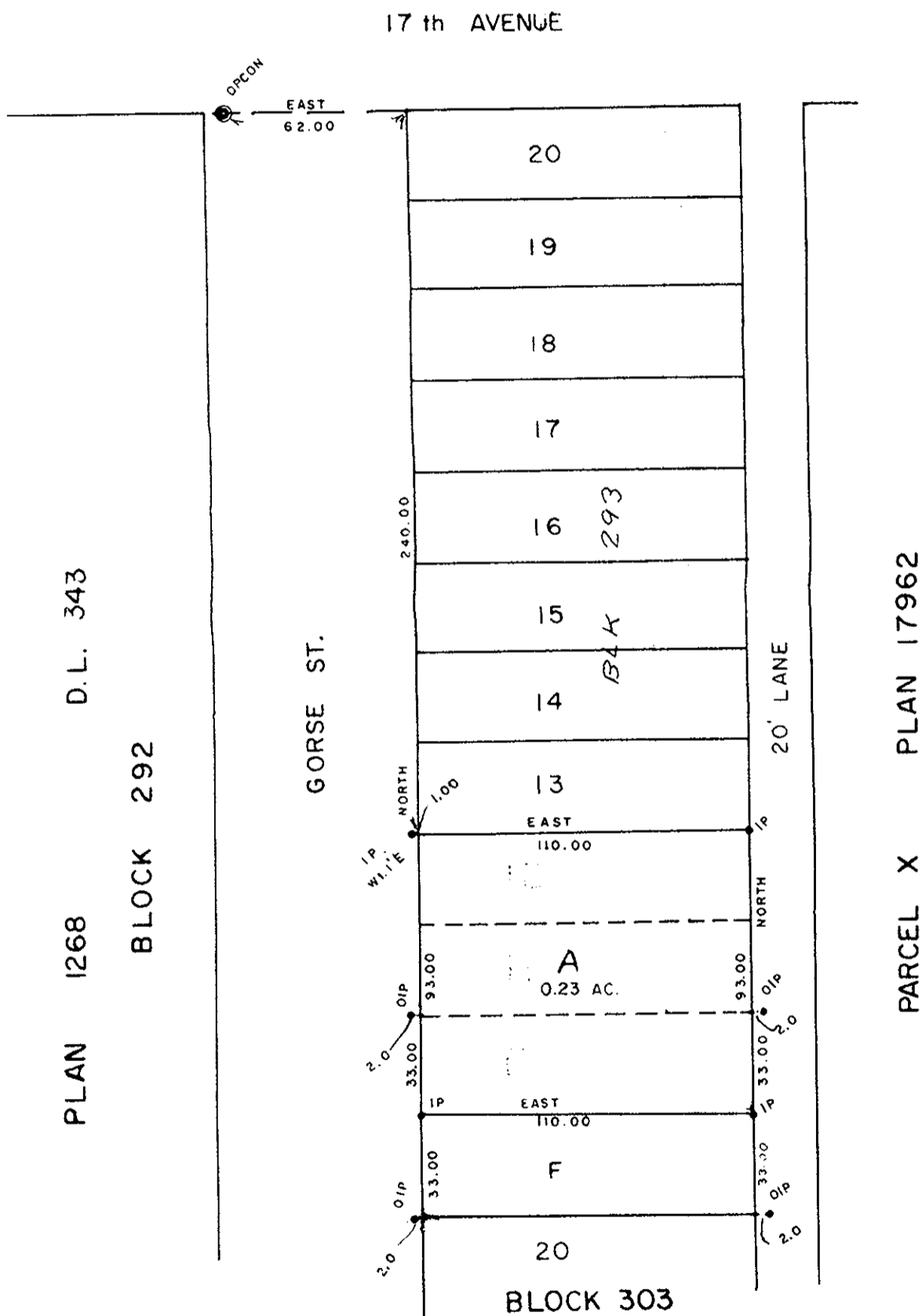
[Signature]
Registrar

PLAN OF SUBDIVISION OF
LOTS 11 & 12, BLOCK 293, PLAN 1268, AND
PART OF CLOSED 18th AVENUE SHOWN
AS PARCEL "E" ON PLAN B 7719.
DISTRICT LOT 343
CARIBOO DISTRICT, BRITISH COLUMBIA

SCALE: 1" = 50'

NOTE: Bearings are astronomic, derived from the
East Boundary of Gorse St. as shown on
Plan 16864.

LEGEND:
• OIP denotes old iron pin found.
⊙ OPCON denotes old concrete monument found.
• IP denotes iron pin set.
WT. denotes WITNESS



PLAN 1268
BLOCK 292
D.L. 343

PARCEL X
PLAN 17962

OWNER: *[Signature]*

[Signature]

WITNESS

[Signature]

I, DONALD A DUFFY of the City of Prince George,
a British Columbia Land Surveyor, make oath and say
that I was present at and did personally superintend
the survey represented by this plan and that the survey
and plan are correct. The said survey was completed
on the 9th day of July 1970.

[Signature]
D.A. DUFFY
B.C.L.S.

Sworn before me this 31st
day of July, 1970

A Commissioner for taking Affidavits
for British Columbia

Approved under the Land Registry Act
this 6th day of AUG., 1970

[Signature]
C. E. Obst.
Approving Officer, City of Prince George

This plan lies within the Fraser-Fort George
Regional District