

Plotted (GX)

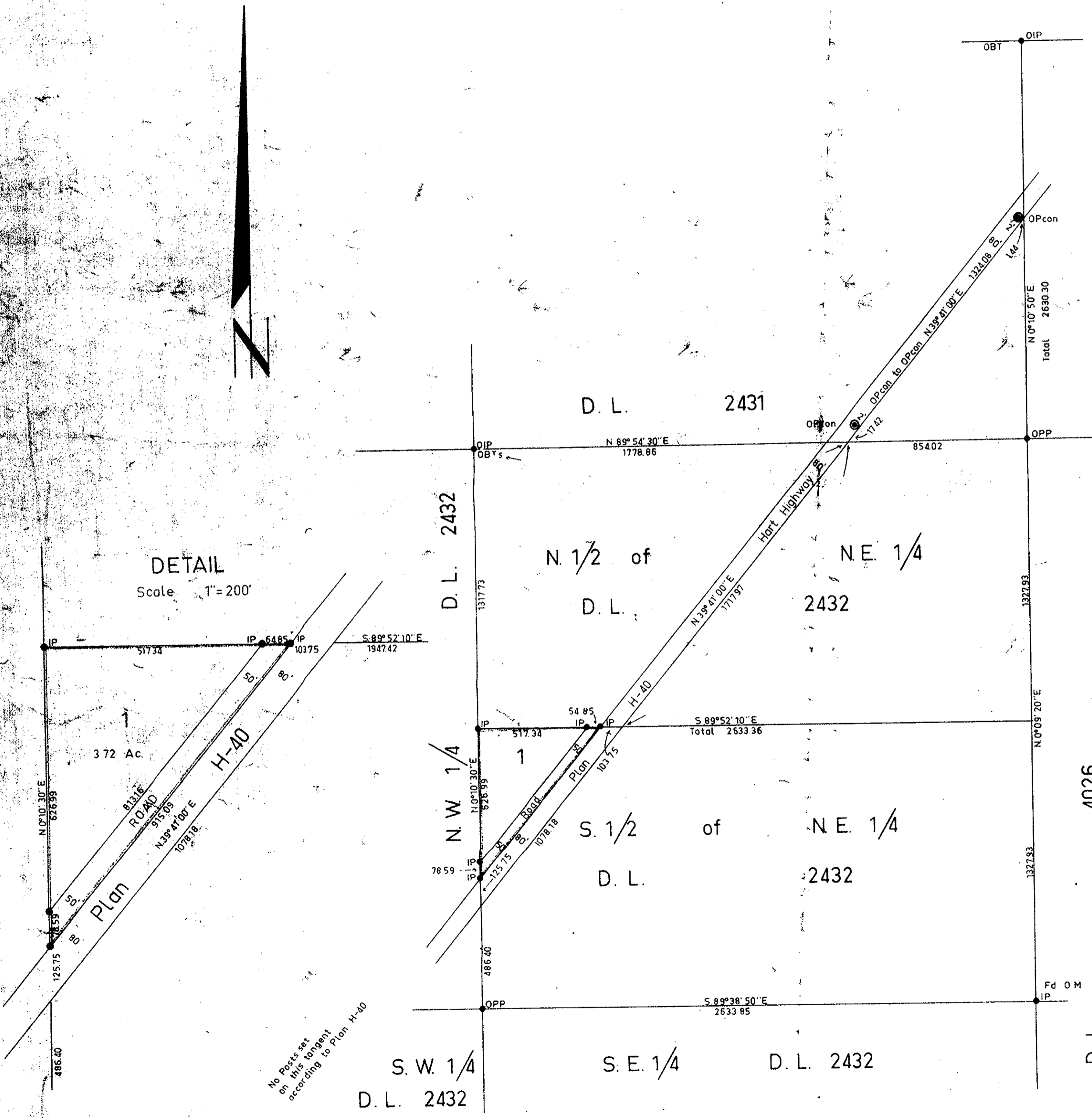
Plan of Subdivision of Part of  
the S. 1/2 of the N.E. 1/4  
District Lot 2432  
Cariboo District.

Scale 1" = 400'

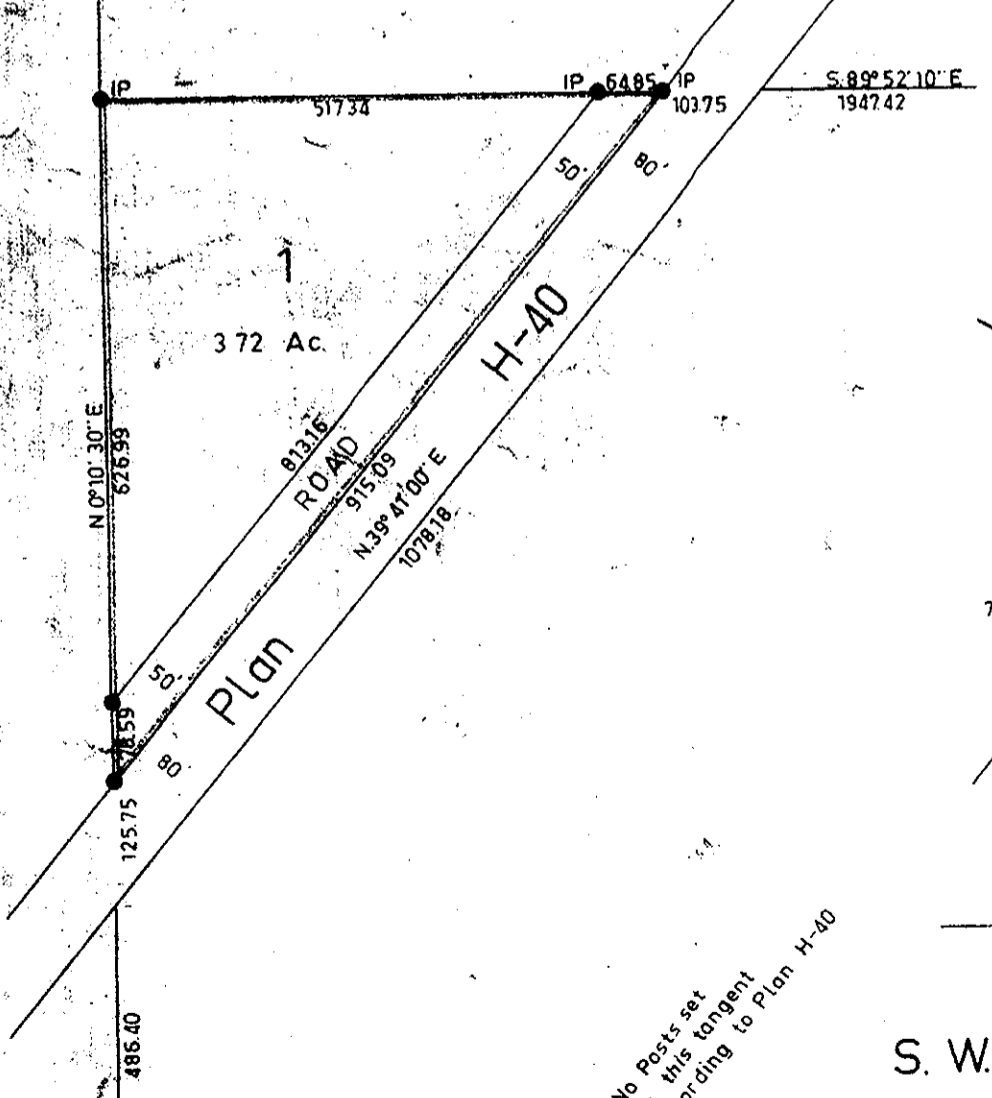
PLAN No 18843

Deposited in the Land Registry Office  
of Prince George  
on the 31st day of August, 1970.

*[Signature]*  
Registrar



DETAIL  
Scale 1" = 200'



- Bearings are astronomic and are derived from OPcons shown on Plan H-40 as N.39°41'00"E
- ⊙ P.con. Standard Concrete Post.
  - ⊙ P.Rock Standard Rock Post.
  - P.P. Standard Pipe Post.
  - I.P. Standard Iron Post.
  - P. Wooden Post.
  - L.P. Lead Plug.
  - Denoting "Old"
  - WT. Denoting "Witness"

I, R. J. Goble, of the City of Prince George, British Columbia, Land Surveyor, make oath and say that I was present at and did personally superintend the survey represented by this plan and that the survey and plan are correct. The said survey was completed on the 15th day of March, 1966.

Sworn before me at Prince George this 16th day of March, 1966.

Approved under the Land Registry Act on the 15th day of December, 1967

*[Signature]*  
Approving Officer  
Dept. of Highways

*[Signature]*  
A Commissioner for taking affidavits within British Columbia.

Owner *[Signature]*  
Witness *[Signature]*

March 20th, 1968.  
Re approved under the Land Registry Act on the 24th day of August 1970

*[Signature]*  
Approving Officer  
Dept. of Highways

McWilliam - Whyte - Serle - Goble			
B.C. Land Surveyors			
Kamloops - Prince George			
Checked	f	s	d
			x
Ref. No			65222