

PLOTTED (JN)

PLAN OF SUBDIVISION OF PART OF
LOT 2, PLAN 9233
DISTRICT LOT 823
CARIBOO DISTRICT, BRITISH COLUMBIA

PLAN No 18842

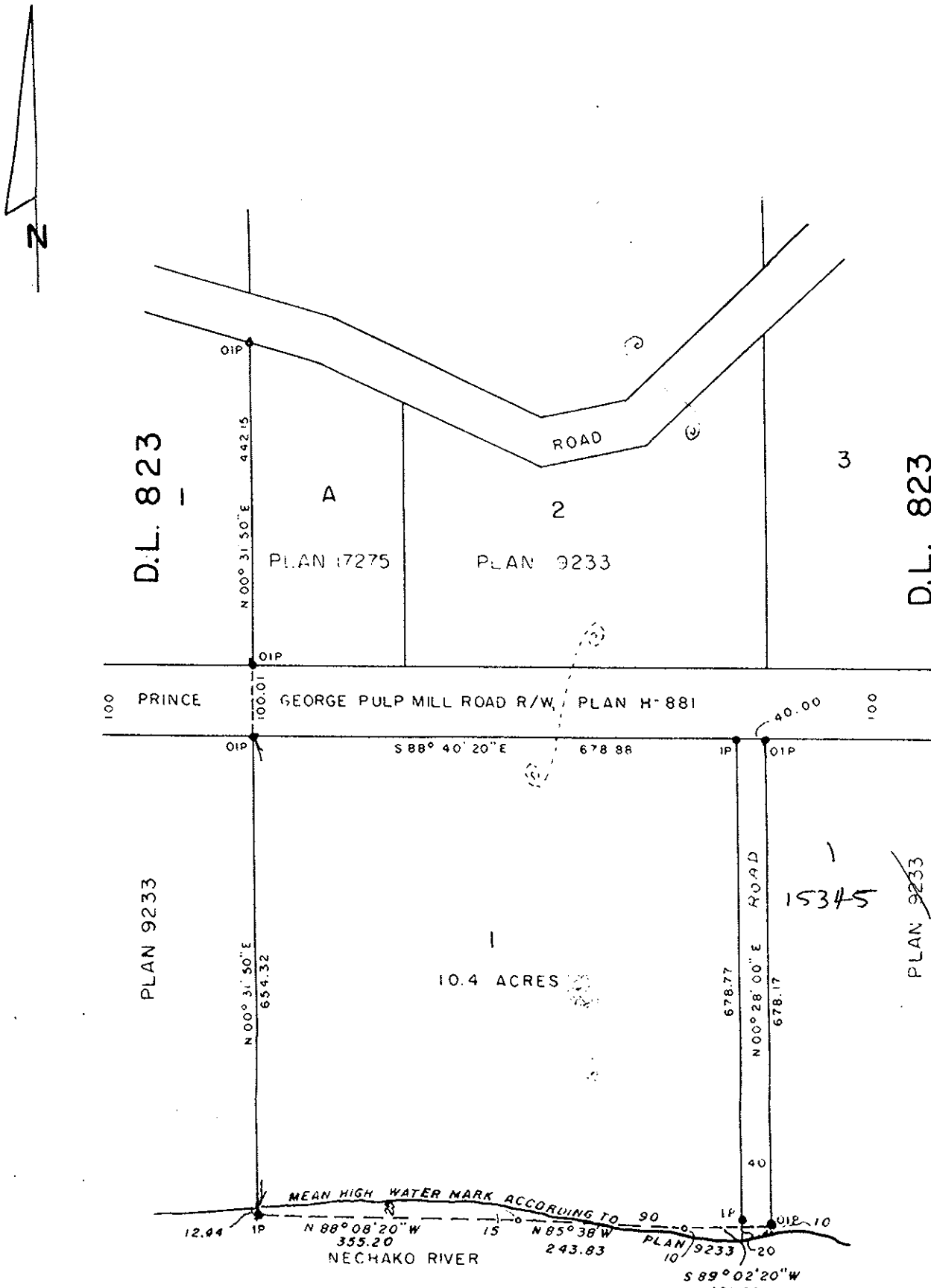
Deposited in the Land Registry
Office at Prince George, B.C. this
31 day of Aug, 1970

SCALE: 1" = 200'

NOTE: Bearings are astronomic, derived from the South
Boundary of the Prince George Pulp Mill Road
R/W, Plan H-881.

[Signature]
Registrar

LEGEND: • OIP denotes an old iron pin found.
• IP denotes an old iron pin found.



#18842

[Signature]
OWNER
[Signature]
WITNESS AS TO SIGNATURE
BY OWNER

I, DONALD A. DUFFY of the City of Prince George,
a British Columbia Land Surveyor, make oath and say
that I was present at and did personally superintend
the survey represented by this plan and that the survey
and plan are correct. The said survey was completed
on the 24th day of JULY 1970.

[Signature]
BCLS

Sworn before me this 31
day of JULY, 1970

Approved under the Land Registry Act
this 27th day of AUG. 1970

[Signature]
Approving Officer, City of Prince George

This plan lies within the Fraser-Fort George
Regional District.

A Commissioner for taking Affidavits
for British Columbia

W D USHER & ASSOCIATES
LAND SURVEYORS
PRINCE GEORGE - B.C.
00-17 3151