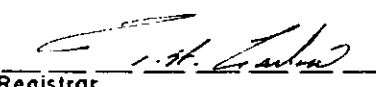


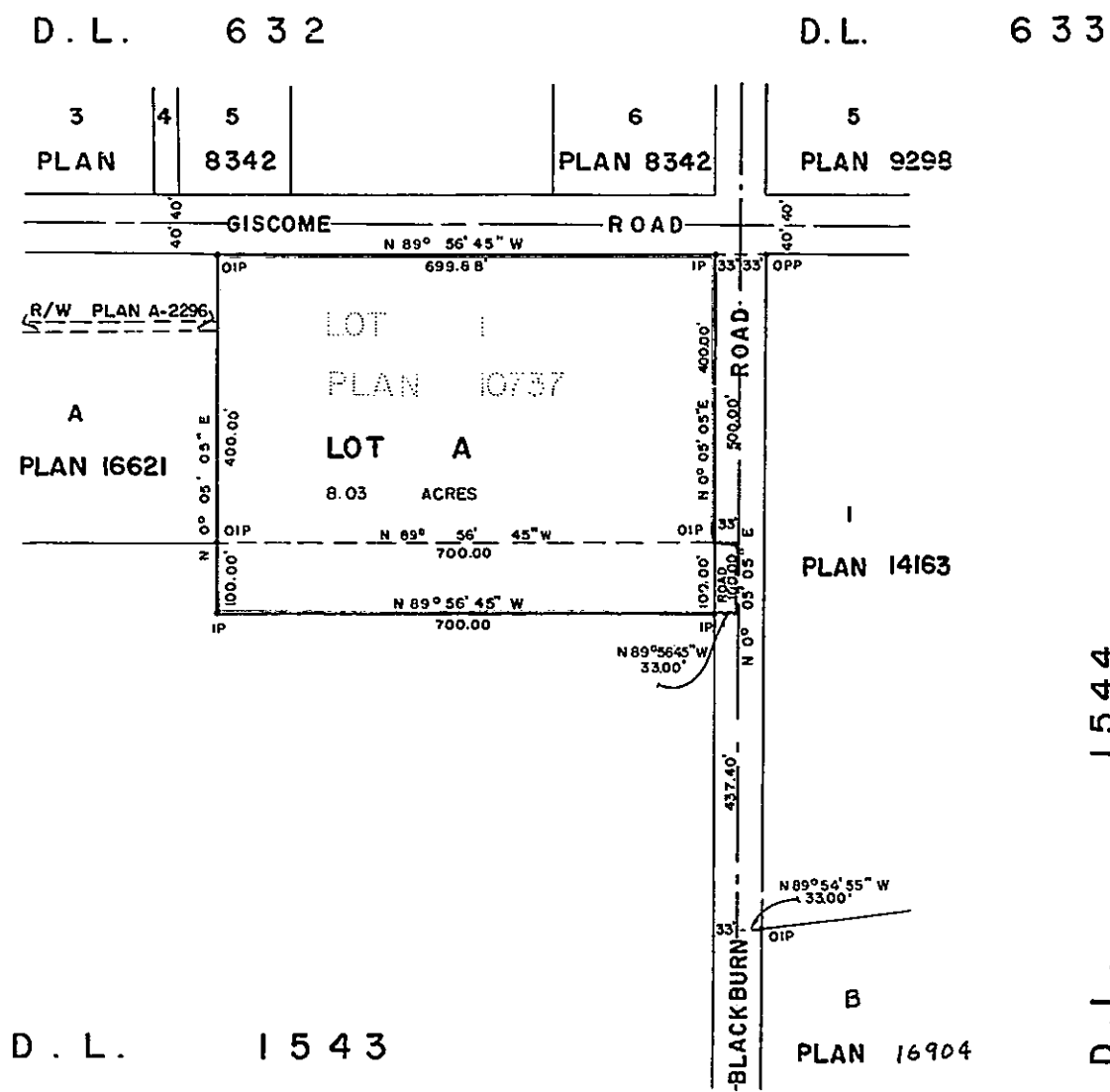
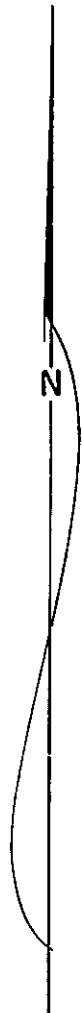
PLAN OF SUBDIVISION OF
 LOT 1, PLAN 10737
DISTRICT LOT 1543
 AND PART OF
 DISTRICT LOT 1543
 EXCEPT PLANS 10737 & 16621
 CARIBOO DISTRICT - BRITISH COLUMBIA

PLAN No 18816
 Deposited in the Land Registry
 Office at Prince George, B.C. this
13 day of Aug, 1970.

 Registrar

SCALE: 1" = 200'

NOTE: Bearings are astronomic, derived from the
 West Boundary of Lot 1, Plan 14163,
 District Lot 1544.

LEGEND: ● OPP denotes an old pipe post found.
 ● OIP denotes an old iron pin found.
 ● IP denotes an iron pin placed on this survey.



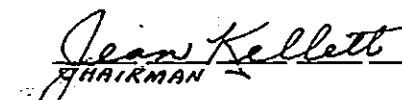
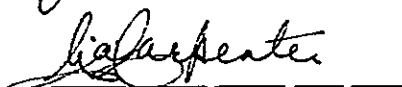
I, DONALD A. DUFFY, of the City of Prince George, a British Columbia Land Surveyor make oath and say that I was present and did personally superintend the survey represented by this plan and that the survey and plan are correct. The said survey was completed on the 20th day of November, 1967.


 B. C. L. S.

Sworn before me this 6th
 day of DEC, 1967


 A Commissioner for taking Affidavits
 within the Province of British Columbia.

BOARD OF SCHOOL TRUSTEES
 OF SCHOOL DISTRICT 57.


 CHAIRMAN

 SECRETARY - TREASURER

Reapproved under the Land Registry Act
 this 5th day of August, 1970


 Approving Officer, Dept. of Hwys

Approved under the Land Registry Act
 this 10th day of April, 1970


 Approving Officer, Dept. of Highways.