

PLAN OF SUBDIVISION OF
PART OF THE N.E. 1/4 OF
DISTRICT LOT 4047
CARIBOO DISTRICT, BRITISH COLUMBIA

PLAN N^o 18719
Deposited in the Land Registry
Office at Prince George, B.C. this
6th day of JULY 1970

[Signature]
Registrar

SCALE 1" = 100'

NOTE Bearings are astronomic, derived from the
west boundary of Lot 2, Plan 18570

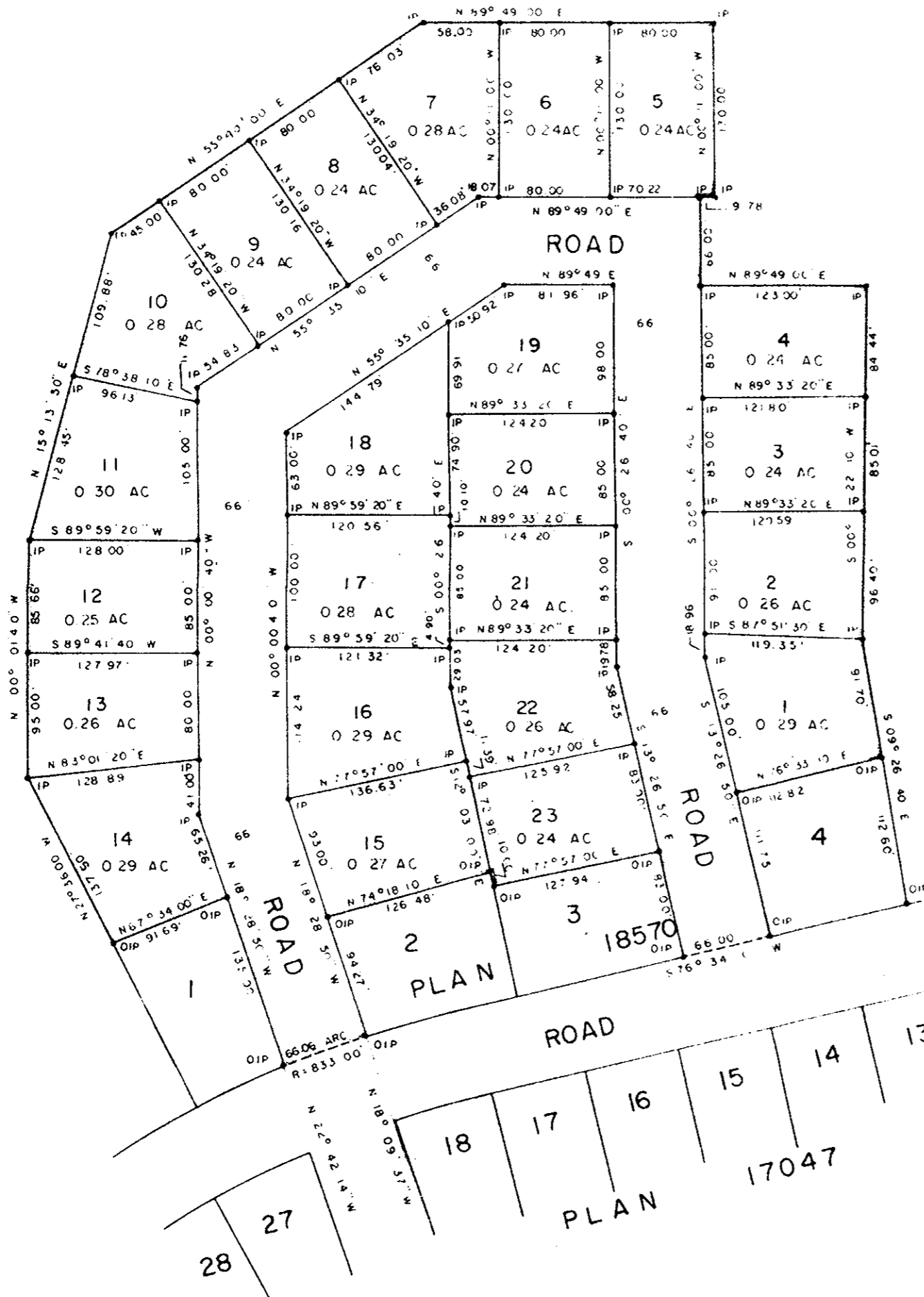
LEGEND • OIP denotes an old iron pin found.
• IP denotes an iron pin set.



N.E. 1/4 D.L. 4047

N.E. 1/4 D.L. 4047

N.E. 1/4 D.L. 4047



I, DONALD A. DUFFY, of the City of Prince George,
a British Columbia Land Surveyor, make oath and say
that I was present at and did personally superintend
the survey represented by this plan and that the survey
and plan are correct. The said survey was completed
on the 22nd day of April, 1970

[Signature]
B.C.L.S.

Sworn before me this 24th
day of July, 1970.

[Signature]
A Commissioner for taking Affidavits
for British Columbia.

GLENVIEW ESTATES LTD.

[Signature]
Director

Approved under the Land Registry Act
this 6th day of July, 1970

[Signature]
Approving Officer, Dept. of Highways.

This plan lies within the Fraser-Fort George
Regional District.