

RECEIVED

PLOTTED (HM)

JUL 15 1970

CITY ASSESSOR
PRINCE GEORGE

PLAN OF SUBDIVISION OF
LOT B
AS SHOWN ON PLAN 17115, AND PART OF
LOT A, PLAN 11453
DISTRICT LOT 1429
CARIBOO DISTRICT, BRITISH COLUMBIA

PLAN N^o 18702

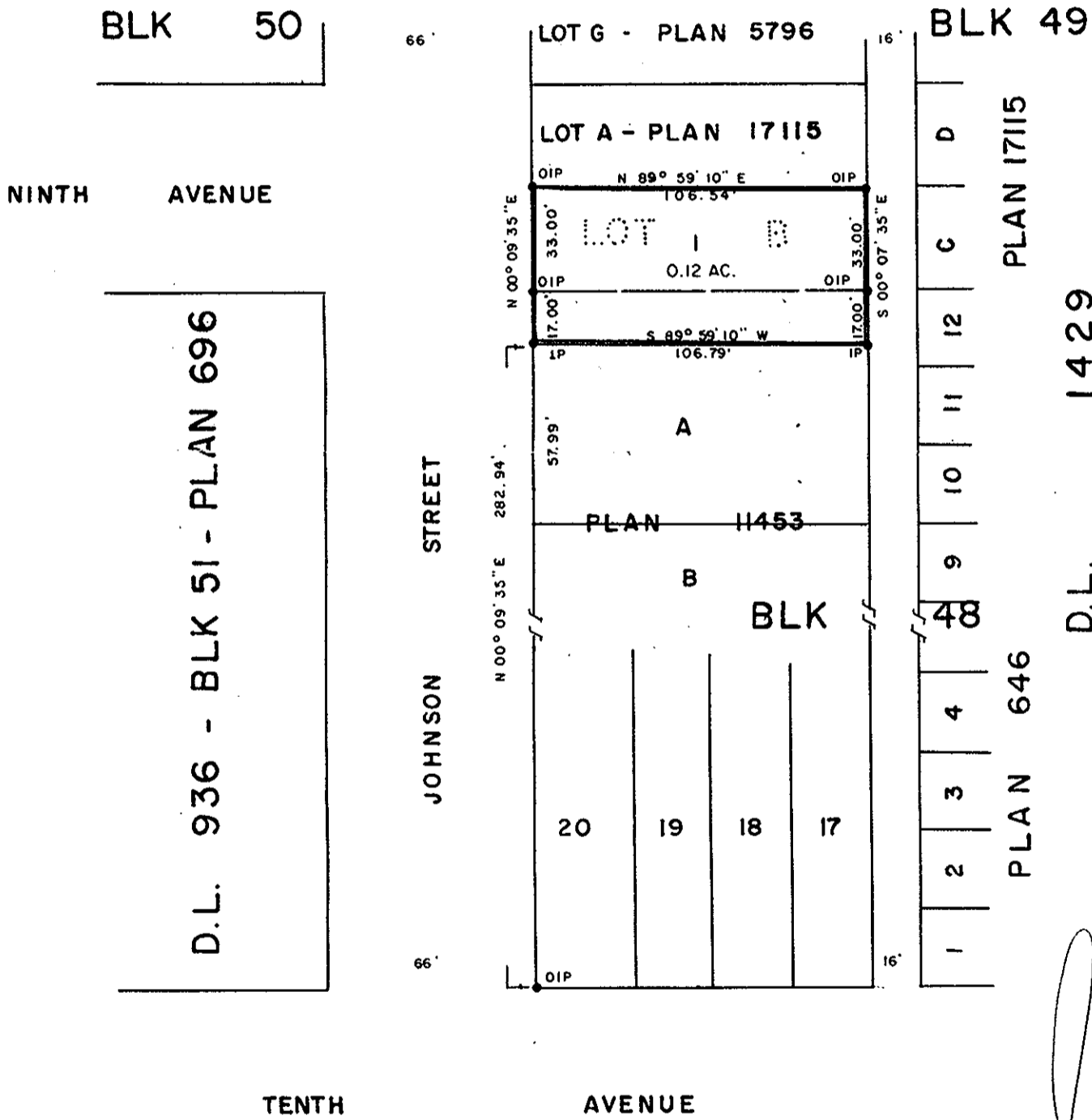
Deposited in the Land Registry
Office at Prince George, B.C. this
24 day of JUNE, 1970

SCALE: 1" = 50'

J.W. Carlow
Registrar

NOTE: Bearings are astronomic, derived from
the east boundary of Johnson St. as
shown on Plan 17115.

LEGEND: • OIP denotes an old iron pin found.
• IP denotes an iron pin set.



I, DONALD A. DUFFY of the City of Prince George, a British Columbia Land Surveyor, make oath and say that I was present at and did personally superintend the survey represented by this plan and that the survey and plan are correct. The said survey was completed on the 17th day of APRIL, 1970.

[Signature]
B.C.L.S.

Sworn before me this 14th day of MAY, 1970.

[Signature]
A Commissioner for taking Affidavits
for British Columbia,

[Signature]
Owner

[Signature]
Witness

Approved under the Land Registry Act
this 19th day of JUNE, 1970

[Signature]
Approving Officer, CITY of Prince George

This plan lies within the Fraser-Fort George
Regional District.

W. D. USHER & ASSOCIATES
LAND SURVEYORS
PRINCE GEORGE - B.C.
DK 19 3143