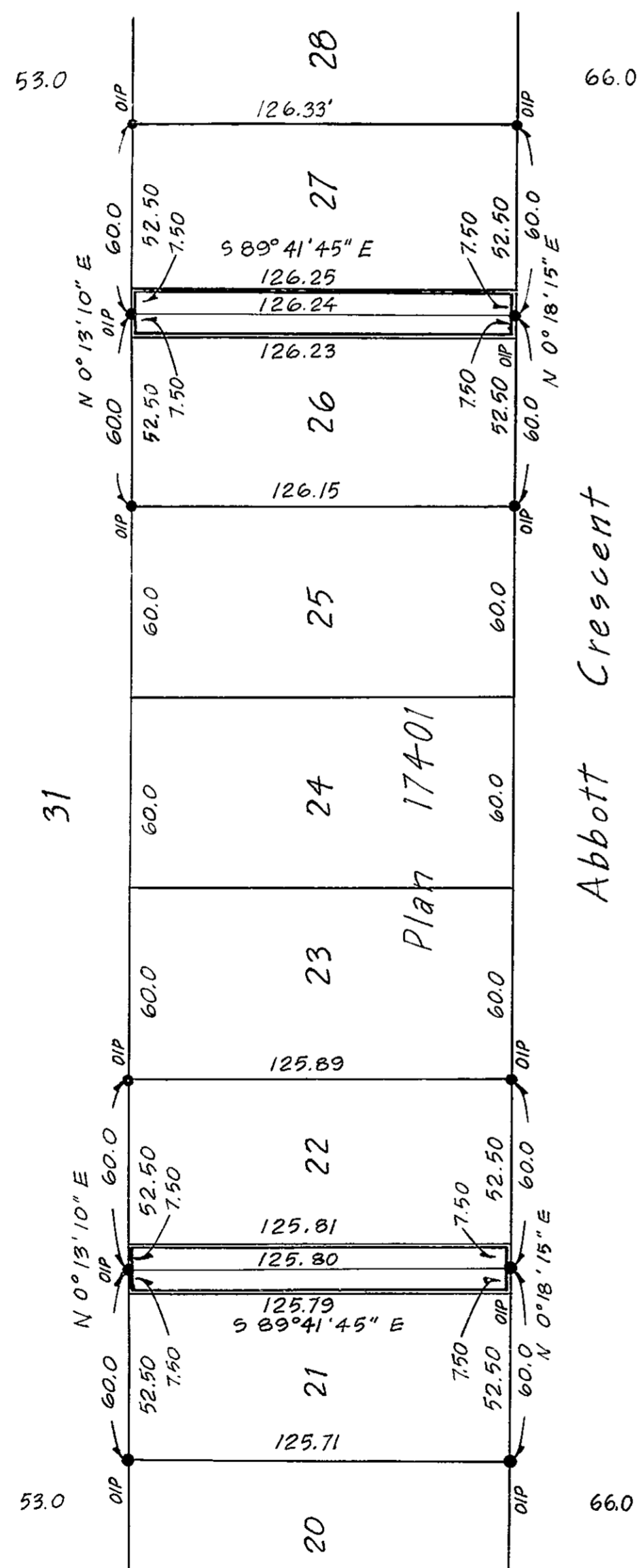




Parcel Y Plan 649



CITY OF PRINCE GEORGE, B.C.
 PLAN OF RIGHT OF WAY
 THROUGH LOTS 21, 22, 26 & 27
 PLAN 17401 DISTRICT LOT 777
 CARIBOO DISTRICT

SCALE 1" = 50'

THIS PLAN LIES WITHIN THE
 FRASER-FORT GEORGE REGIONAL DISTRICT

PLAN No 18587

Deposited in the Land Registry Office
 at Prince George on the 24 day of April 1970

[Signature]
 Registrar

Bearings are astronomic and are derived from
 OIPs on South Boundary of Lots 22 and 27, shown
 as S 89°41'45" E on Plan 17401.

- ⊙ P.con. Standard Concrete Post.
- ⊙ P.Rock Standard Rock Post.
- P.P. Standard Pipe Post.
- I.P. Standard Iron Post.
- P. Wooden Post.
- L.P. Lead Plug.
- Denoting "Old"
- WT. Denoting "Witness"

I, V. BARTELL of the City of Prince George
 British Columbia Land Surveyor, make oath and
 say that I was present at and did personally
 superintend the survey represented by this
 plan and that the survey and plan are correct.
 The said survey was completed on
 the 23 day of April 1970

[Signature]

Sworn before me at Prince George
 this 23 day of April 1970.

[Signature]
 Commissioner for taking affidavits
 for British Columbia.

R/W taken from	Area Required	
	Sq. Ft.	Acres
Lot 21, Plan 17401	943.5	0.0217
Lot 22, Plan 17401	943.5	0.0217
Lot 26, Plan 17401	946.8	0.0217
Lot 27, Plan 17401	946.8	0.0217