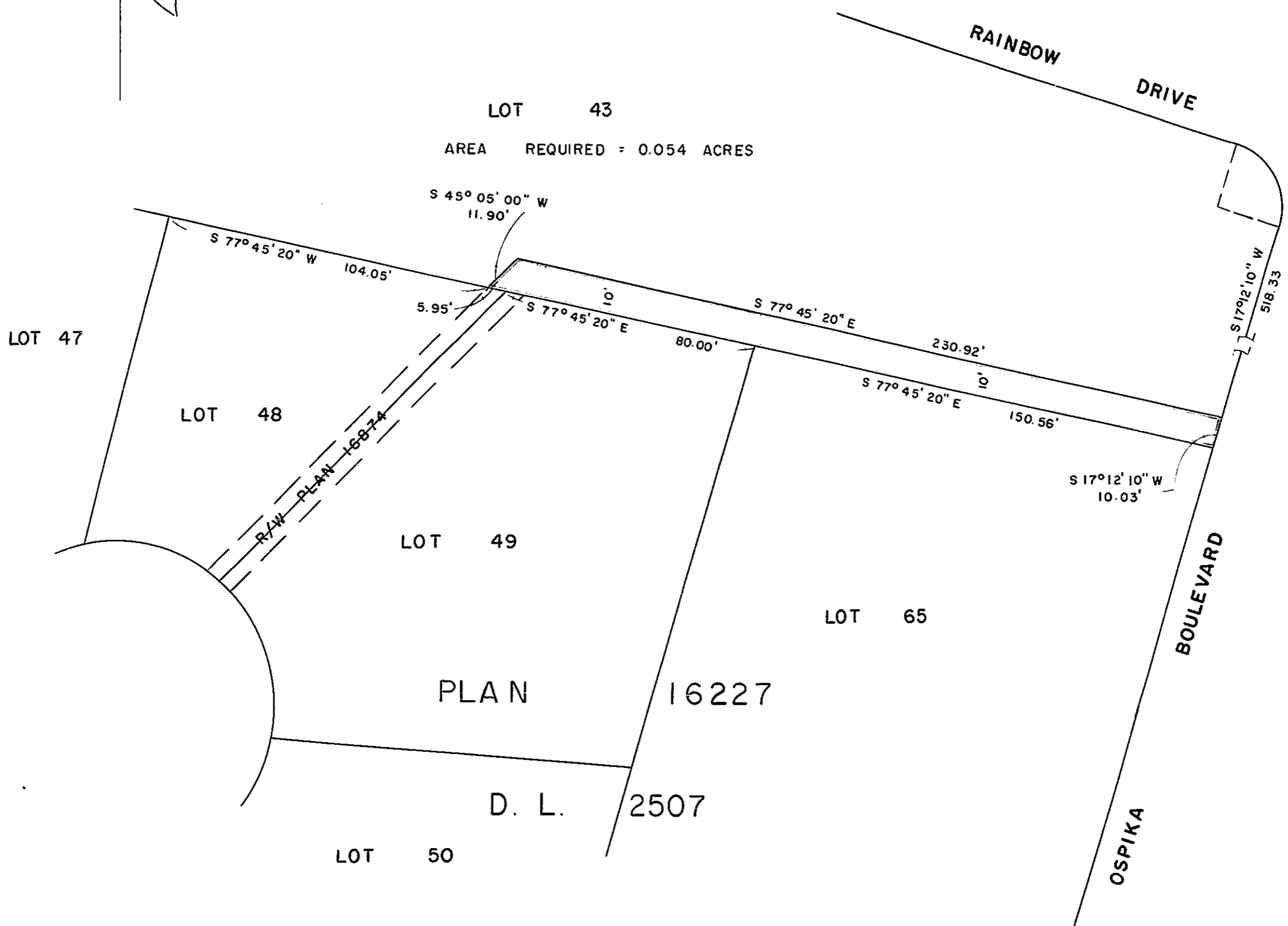


EXPLANATORY PLAN OF
RIGHT - OF - WAY THROUGH
LOT 43 , PLAN 16227
DISTRICT LOT 2507
CARIBOO DISTRICT- BRITISH COLUMBIA

SCALE: 1" = 40'

PLAN N^o 18574
Deposited in the Land Registry
Office at Prince George, B. C.
this 15 day of April, 1968.

[Signature]
Registrar



CERTIFIED CORRECT
This 21st day of February, 1968.

[Signature]
D.A. DUFFY, B.C.L.S.

W.D. USHER & ASSOCIATES
LAND SURVEYORS
PRINCE GEORGE, B.C.
2452