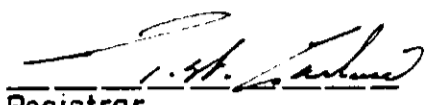
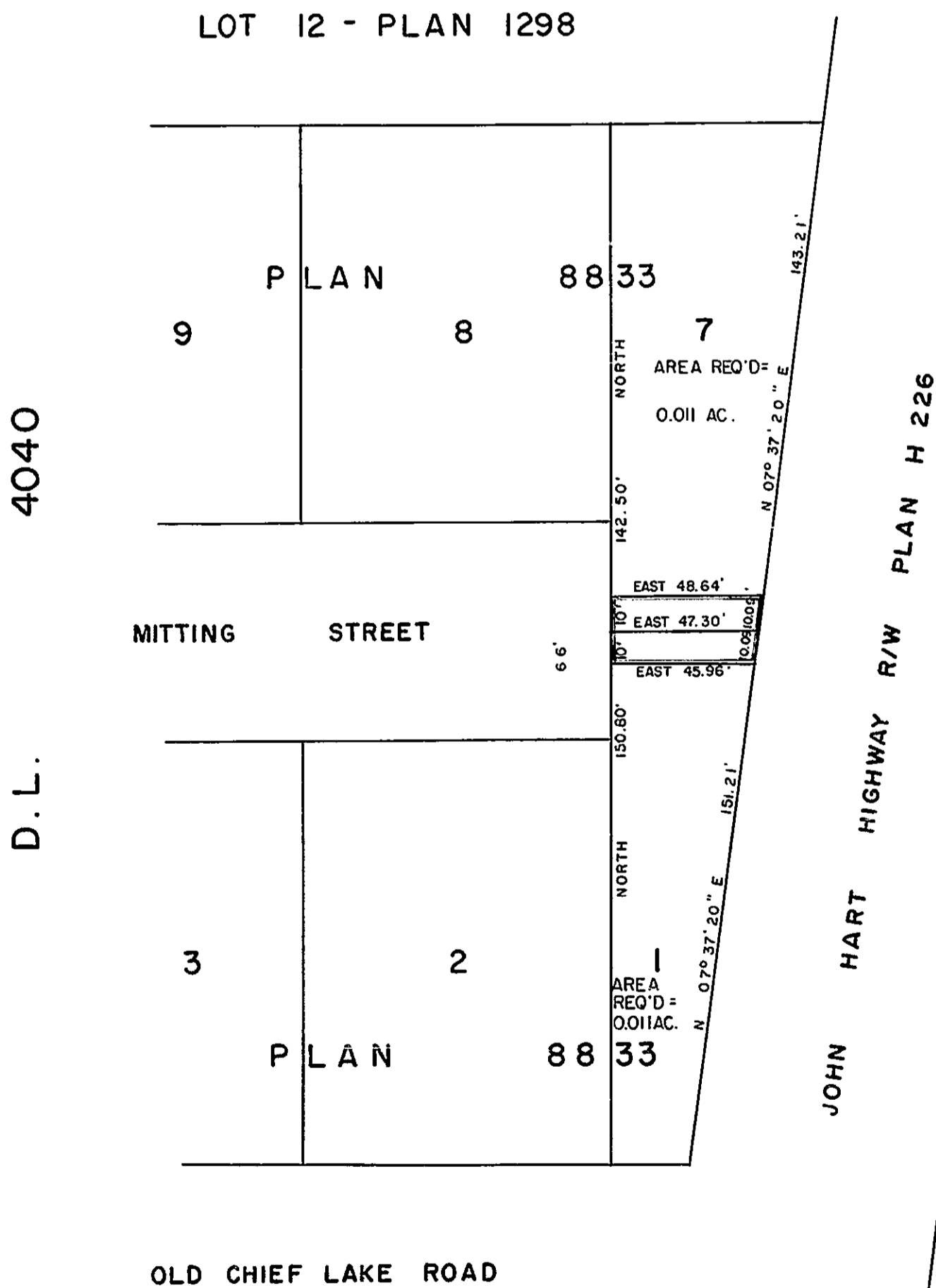
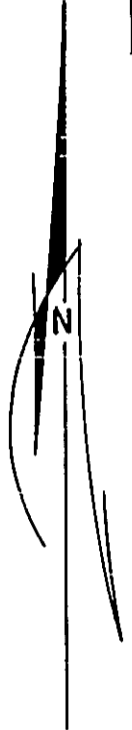


EXPLANATORY PLAN OF  
 RIGHT-OF-WAY THROUGH  
 LOTS 1, 8, 7, PLAN 8833  
 DISTRICT LOT 4040  
 CARIBOO DISTRICT, BRITISH COLUMBIA

PLAN No **18569**  
 Deposited in the Land Registry  
 Office at Prince George, B.C.  
 this 13 day of April, 1970  
  
 Registrar

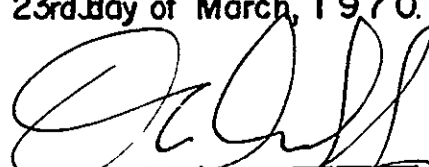
SCALE: 1" = 50'

BOOK OF REFERENCE	
PARCEL	AREA REQ'D
LOT 1	0.011 ACRES
LOT 7	0.011 ACRES



CERTIFIED CORRECT

According to measurements  
 shown on Plan 8833, this  
 23rd day of March, 1970.

  
 D.A. DUFFY, B.C.L.S.

W.D. USHER & ASSOCIATES  
 LAND SURVEYORS  
 PRINCE GEORGE, B.C.  
 3117.