

B.C. HYDRO & POWER AUTHORITY
PATRICIA - CHIEF LAKE TRANSMISSION LINE

PLAN No **18310**

Deposited in the Land Registry
 Office at Prince George, B.C.
 this 9th day of October, 1969.

[Signature]
 Asst. Deputy Registrar

This plan lies within the Fraser-Fort
 George Regional District.

PLAN OF RIGHT-OF-WAY THROUGH
DISTRICT LOTS 2424, 4048, & 4049
 CARIBOO DISTRICT, BRITISH COLUMBIA.

SCALE: 1" = 200'

NOTE: Bearings are astronomic, derived from the South
 boundary of the N.W. 1/4 of D.L. 2424 as shown on Plan 17935.

LEGEND:
 ●OPP denotes an old pipe post found.
 ●OIP denotes an old iron pin found.
 ●IP denotes an iron pin placed on this survey.
 ●CIP denotes a capped iron pin placed on this survey.

PARCEL	BOOK OF REFERENCE	CENTRELINE LENGTH	AREA REQ'D
S.W. 1/4 D.L. 2424		2 638.96'	6.06 ACRES
N.W. 1/4 D.L. 4048		2 642.00'	6.07 ACRES
S.W. 1/4 D.L. 4048		2 647.48'	6.08 ACRES
N.W. 1/4 D.L. 4049		2 643.98'	6.07 ACRES

I, DONALD A. DUFFY, of the City of Prince George,
 a British Columbia Land Surveyor make oath and say
 that I was present at and did personally superintend the
 survey represented by this plan and that the survey and
 plan are correct. The said survey was completed on the
 29 day of May, 1969.

I hereby certify that this is a true
 copy of the Official Plan on deposit in
 the Department of Lands, Forests and
 Water Resources and numbered 19
 Tube 907.

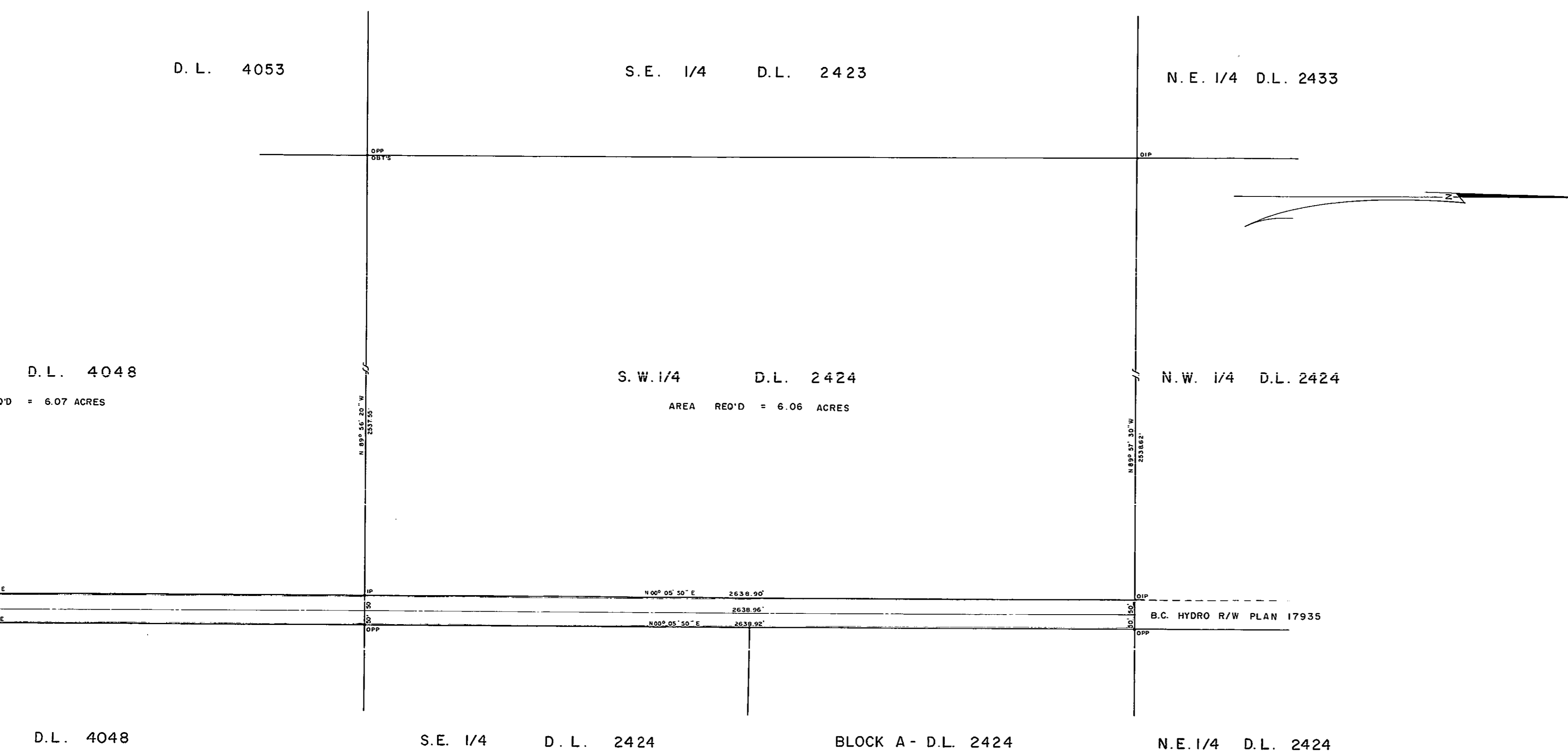
[Signature]
 B.C. L.S.

Sworn before me this 6th
 day of June, 1969.

[Signature]
 A Commissioner for taking Affidavits
 for British Columbia.

[Signature]
 Acting-Surveyor General, Victoria, B.C.
 September 30, 1969.

WD USHER & ASSOCIATES
 LAND SURVEYORS
 PRINCE GEORGE, B.C.
 CN 2444



D. L. 4053

S. E. 1/4 D. L. 2423

N. E. 1/4 D. L. 2433

D. L. 4048

= 6.07 ACRES

S. W. 1/4 D. L. 2424

AREA REQ'D = 6.06 ACRES

N. W. 1/4 D. L. 2424

D. L. 4048

S. E. 1/4 D. L. 2424

BLOCK A - D. L. 2424

N. E. 1/4 D. L. 2424



D. L. 4053

D. L. 4053

S. E. 1/4 D.L. 2423

N. E. 1/4 D.L. 2423

BLOCK A

S. W. 1/4 D. L. 4048

AREA REQ'D = 6.08 ACRES

N. W. 1/4 D. L. 4048

AREA REQ'D = 6.07 ACRES

S. W. 1/4 D.L. 2424

AREA REQ'D = 6.06 ACRES

N. W. 1/4 D.L. 2424

N 00° 16' 40" W
2647.77'

N 88° 32' 10" W
1217.40'

N 00° 09' 00" E
2641.94'

N 89° 57' 30" W
2538.65'

N 00° 05' 30" E
2638.90'

N 89° 57' 30" W
2538.65'

N 00° 05' 30" E
2639.92'

B.C. HYDRO R/W PLAN 1793

S. E. 1/4 D. L. 4048

N. E. 1/4 D.L. 4048

S.E. 1/4 D. L. 2424

BLOCK A - D.L. 2424

N.E. 1/4 D.L. 2424

