

N.W. 1/4 D.L. 630

N.E. 1/4 D.L. 630

PLAN N^o 18283
Deposited in the Land Registry
Office at Prince George, B.C. this
19 day of Sept, 1969

LOT 4-PLAN 12254

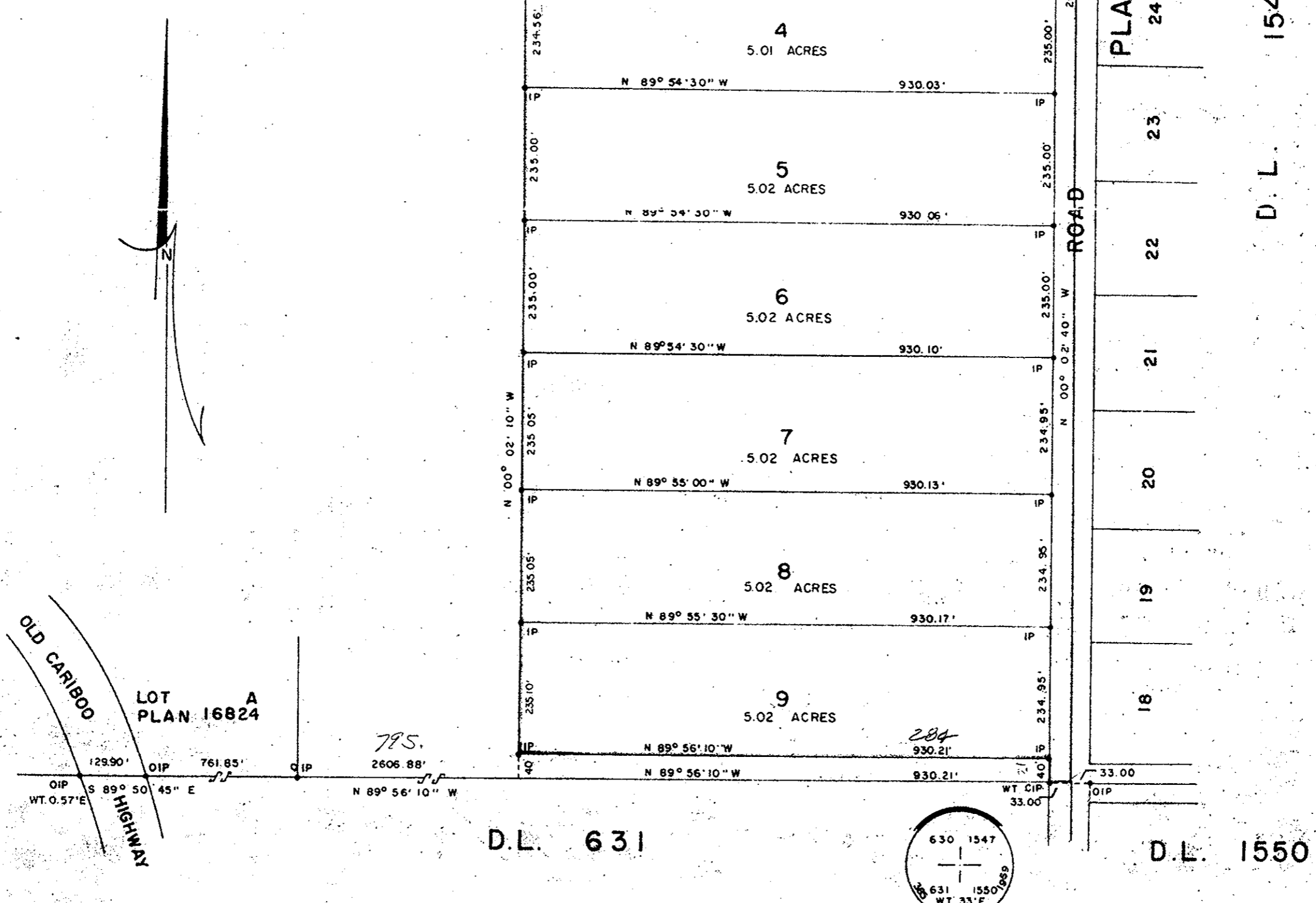
PLAN OF SUBDIVISION OF
PART OF THE S.E. 1/4 OF
DISTRICT LOT 630
CARIBOO DISTRICT
BRITISH COLUMBIA

SCALE: 1" = 200'

NOTE: Bearings are astronomic, derived from
the South boundary of D.L. 630 as
shown on Plan 16824.

LEGEND: • OIP denotes an old iron pin found.
• IP denotes an iron pin placed on this survey.
• CIP denotes a capped iron pin set.

S.E. 1/4 D.L. 630



Registrar
[Signature]

4" AC... C 150
TO 7 1/2" PT.

63
62
9998
61
60
25
24
23
22
21
20
19
18
PLAN
D.L. 1547

I, DONALD A. DUFFY, of the City of Prince George,
a British Columbia Land Surveyor make oath and say
that I was present at and did personally superintend
the survey represented by this plan and that the survey
and plan are correct. The said survey was completed
on the 15TH day of AUGUST, 1969.

[Signature]
B. C. L. S.

Sworn before me this 19TH
day of August, 1969

[Signature]
A Commissioner for taking Affidavits
within the Province of British Columbia.

Owner
[Signature]

Witness
[Signature]

Approved under the Land Registry Act
this 8TH day of SEPTEMBER, 1969

[Signature]
Approving Officer, Dept. of Highways.

W. D. USHER & ASSOCIATES
LAND SURVEYORS
PRINCE GEORGE - B. C.
CJ61-63 2835