

PLAN No 18280
 Deposited in the Land Registry Office at
 PRINCE GEORGE on the 12th day of SEPT. 1969.

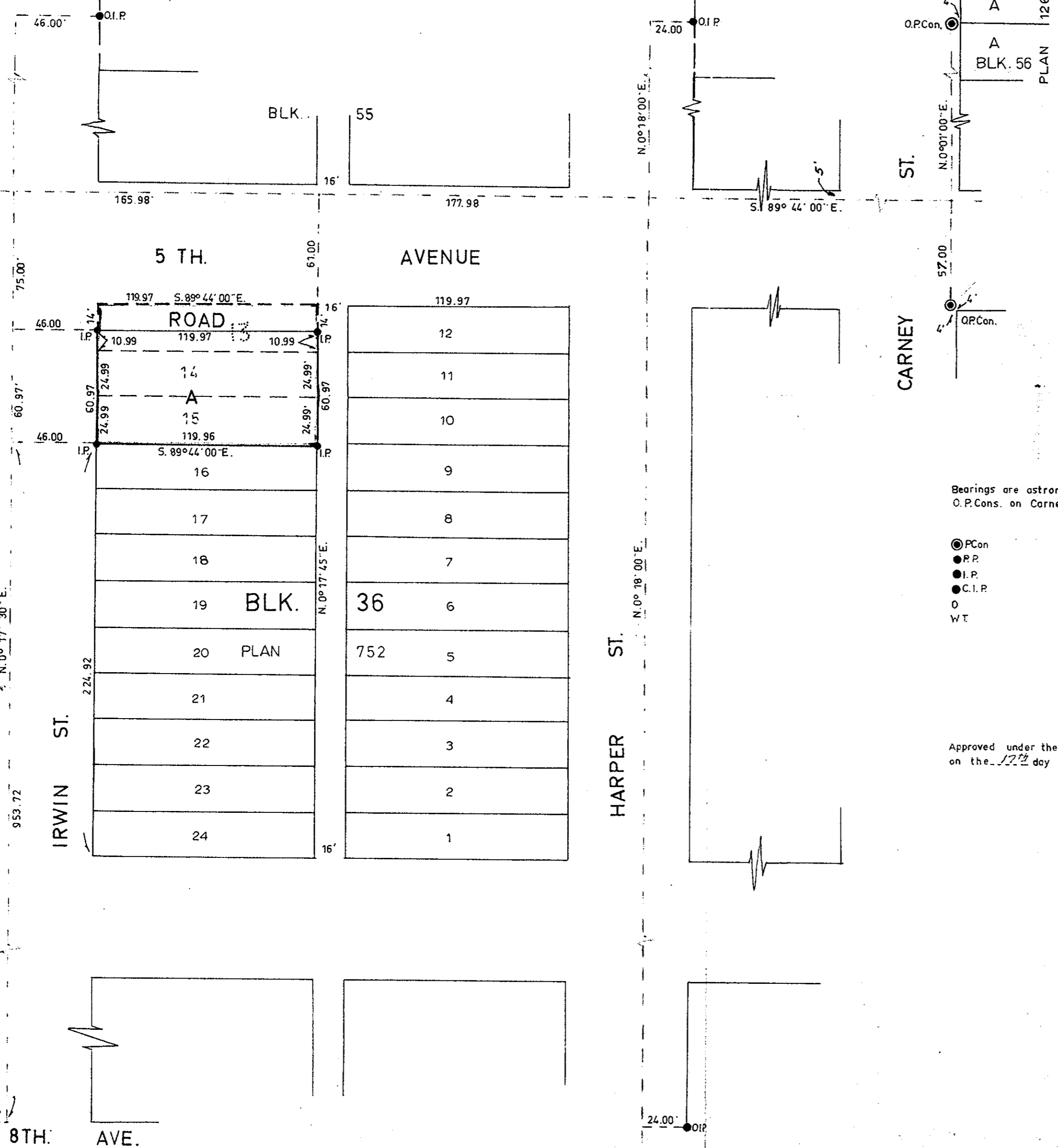
[Signature]
 Registrar.

RECEIVED
 OCT 27 1969
 CITY ASSESSOR
 PRINCE GEORGE

PLAN OF SUBDIVISION
 OF LOTS 13, 14 AND 15,
 BLOCK 36, PLAN 752,
 DISTRICT LOT 937,
 CARIBOO DISTRICT.

SCALE: 1" = 50'

KELLY ST.



Bearings are astronomic and are derived from
 O.P.Cons. on Carney St. shown as N.0°01'00"E.

- P.Con Post in concrete.
- P.P. Standard Pipe Post.
- I.P. Standard Iron Post.
- C.I.P. Capped Iron Post.
- Denoting "Old"
- WT Denoting "Witness"

I, V. Bartell of the City of Prince George,
 British Columbia Land Surveyor, make oath and
 say that I was present at and did personally
 superintend the survey represented by this
 plan and that the survey and plan are correct.

The said survey was completed on
 the 17th day of September, 1969.

[Signature]
 V. Bartell,
 B.C.L.S.

Sworn before me at Prince George,
 this 17th day of September, 1969.

Approved under the Land Registry Act
 on the 12th day of SEPT. 1969.

[Signature]
 Approving Officer
 City of Prince George

OWNER *[Signature]*
 Owner *[Signature]*
 Witness *[Signature]*

McWilliam-Whyte-Goble & Associates
 B.C. Land Surveyors
 Kamloops Prince George

REF NO. 69100-8