

PLAN OF SUBDIVISION OF
PART OF N.W. 1/4 OF
DISTRICT LOT 2424
CARIBOO DISTRICT-BRITISH COLUMBIA

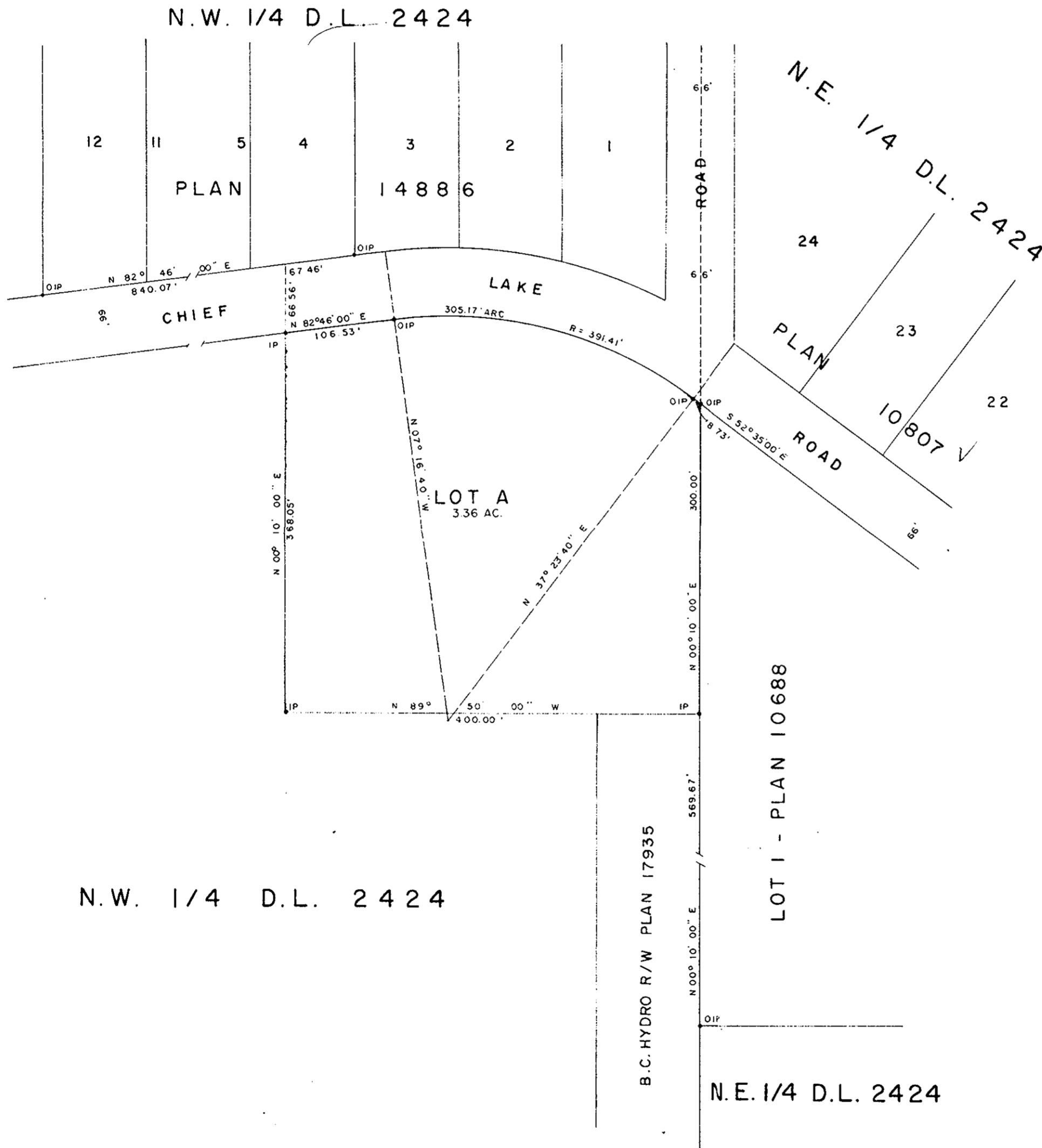
PLAN No 18248
Deposited in the Land Registry
Office at Prince George, B.C. this
2 day of Sept, 1962

SCALE: 1" = 100'

NOTE: Bearings are astronomic, derived from the
West boundary of Lot 1, Plan 10688,
D.L. 2424

LEGEND: •OIP denotes an old iron pin found.
•IP denotes an iron pin placed on this survey.

[Signature]
Asst. Deputy Registrar



I, DONALD A. DUFFY, of the City of Prince George, a British Columbia Land Surveyor make oath and say that I was present at and did personally superintend the survey represented by this plan and that the survey and plan are correct. The said survey was completed on the 8th day of November, 1968.

[Signature]
D. A. Duffy
B. C. L. S.

Sworn before me this 4th
day of December, 1968

[Signature]
A Commissioner for taking Affidavits
within the Province of British Columbia.

[Signature]
Laraine E. Jones
Owner

[Signature]
Witness

Re-Approved under the Land Registry Act
This 2nd day of September, 1969

[Signature]

Approved under the Land Registry Act
this 3rd day of December, 1968.

[Signature]

Approving Officer, Dept. of Highways.

W. D. USHER & ASSOCIATES
LAND SURVEYORS
PRINCE GEORGE - B.C.
CI 72 2432 A

805 P-51-14