

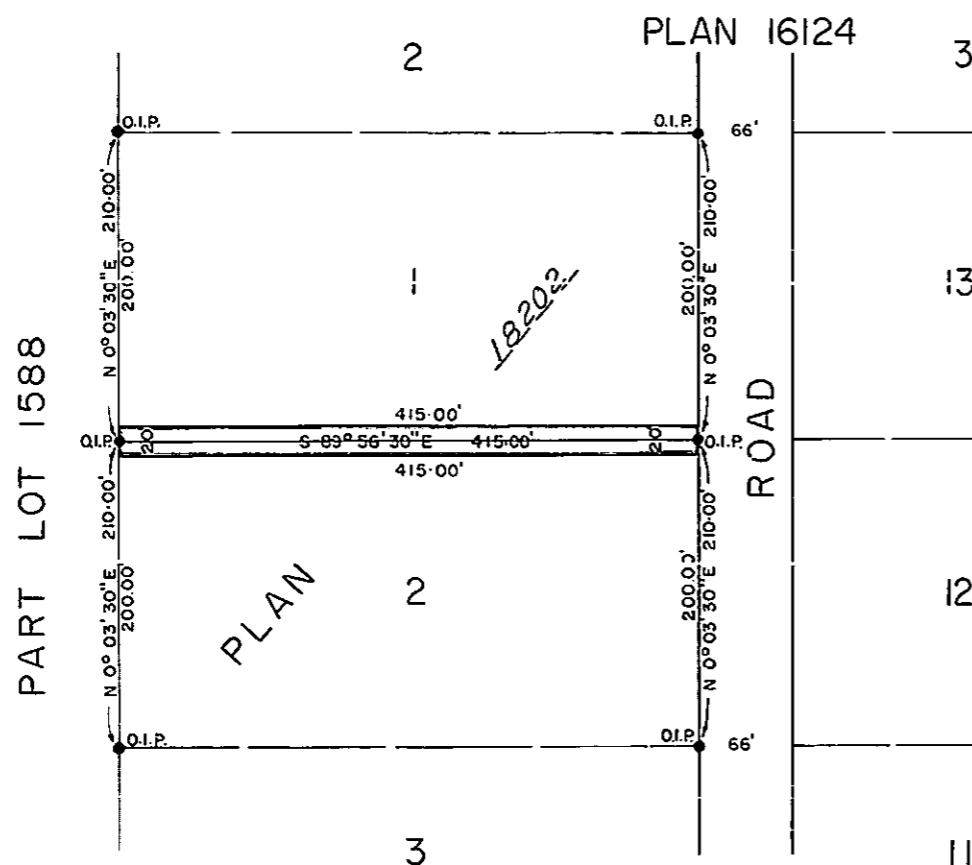
**PLAN No 18214**

Deposited in the Land Registry Office  
at Prince George on the 22 day of Aug 1962

*[Signature]*  
Registrar.

Plan of Drainage Right-of-Way in  
Lot 1 and 2 of Plan 18202  
District Lot 1588  
Cariboo District

Scale: 1" = 100'



Book of Reference	
R/W Within:	Area:
Lot 1	4150 sq. ft.
Lot 2	4150 sq. ft.

Bearings are astronomic and are derived from  
South Boundary, Lot 1, Plan 18202

⊙ P.con. .... Standard Concrete Post.  
⊙ P.Rock .... Standard Rock Post.  
● P.P. .... Standard Pipe Post.  
● I.P. .... Standard Iron Post.  
○ P. .... Wooden Post.  
■ L.P. .... Lead Plug.  
○ .... Denoting "Old"  
WT. .... Denoting "Witness"

I, A. DANILUCK, of the CITY of PRINCE GEORGE, B.C.,  
British Columbia Land Surveyor, make oath and  
say that I was present at and did personally  
superintend the survey represented by this  
plan and that the survey and plan are correct.  
The said survey was completed on  
the 2nd day of SEPT. 1966.

*A. Daniluck*  
B.C.L.S.

Sworn before me at Prince George, B.C.,  
this 9th day of September 1966.

*[Signature]*  
A Commissioner for taking affidavits  
within British Columbia.

Approved under the Land Registry Act  
on the 1st day of August 1962

*[Signature]*  
Approving Officer

McWilliam — Whyte — Serle — Goble  
B.C. Land Surveyors  
Kamloops — Prince George.  
Checked       
Ref. No. 64240-D