

SUBDIVISION PLAN
OF PART OF
LOT 931
CARIBOO DISTRICT.

B. C.
SCALE 3 CHAINS TO 1 INCH.

1810
April 28/22

I, F. P. Burden, British Columbia Land Surveyor, make oath and say that I was present at and did personally see and check the survey represented by this plan, and that the survey and plan are correct. The said survey was completed on the 17th day of March, 1922.

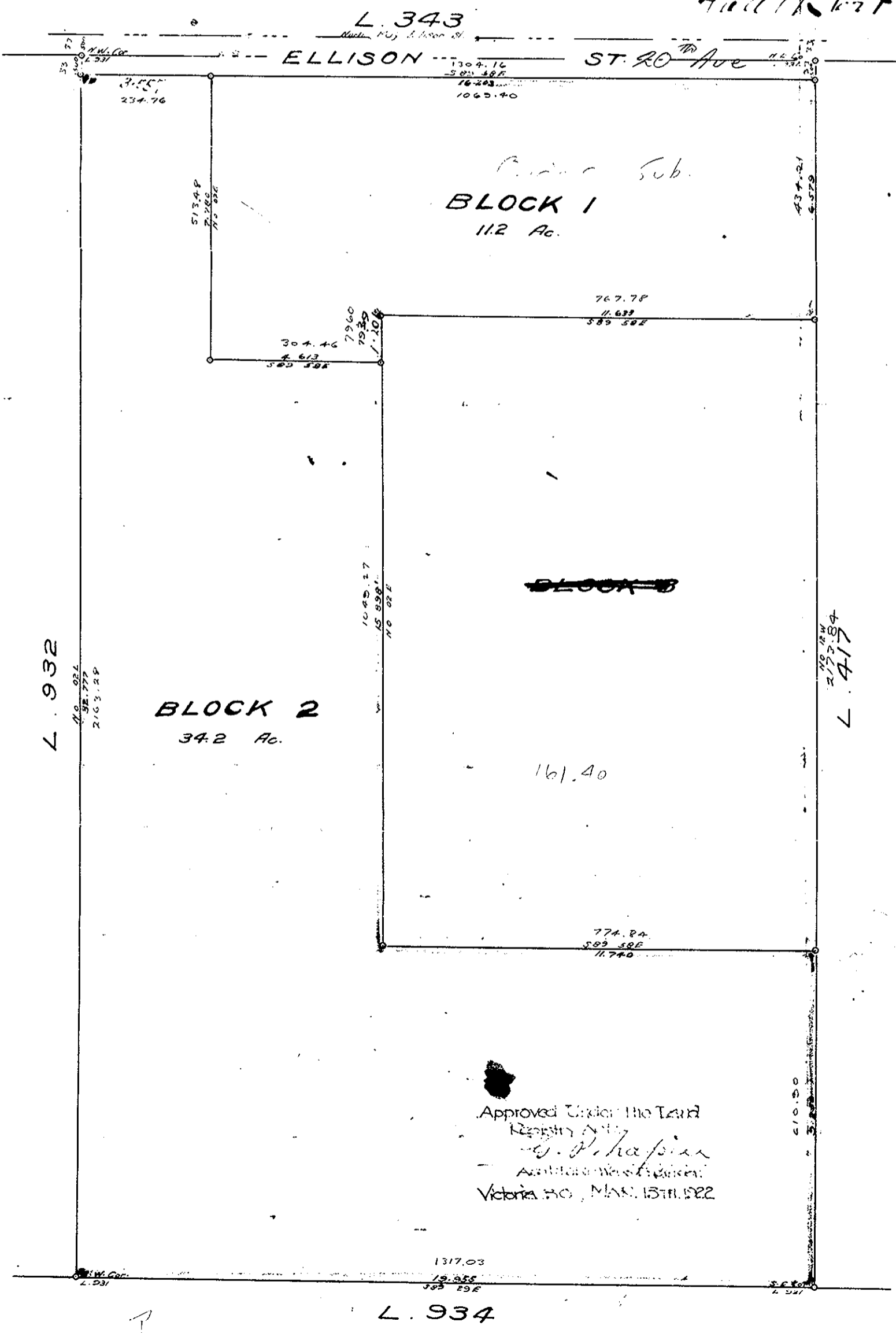
Sworn before me this 6th day of May 1922.

F. P. Burden
F. P. Burden
Land Surveyor

Witness my hand and seal at Vancouver, B. C., this 6th day of May 1922.

Note: Drawings derived from Plat Map L. 343. Corners shown on plan defined on ground by durable wood posts.

*Cost by surveyor
and the lot owner
etc.*



Approved Under the Land
Registry Act
W. P. Burden
Auditor and Registrar
Victoria B.C., MAY 15th 1922