

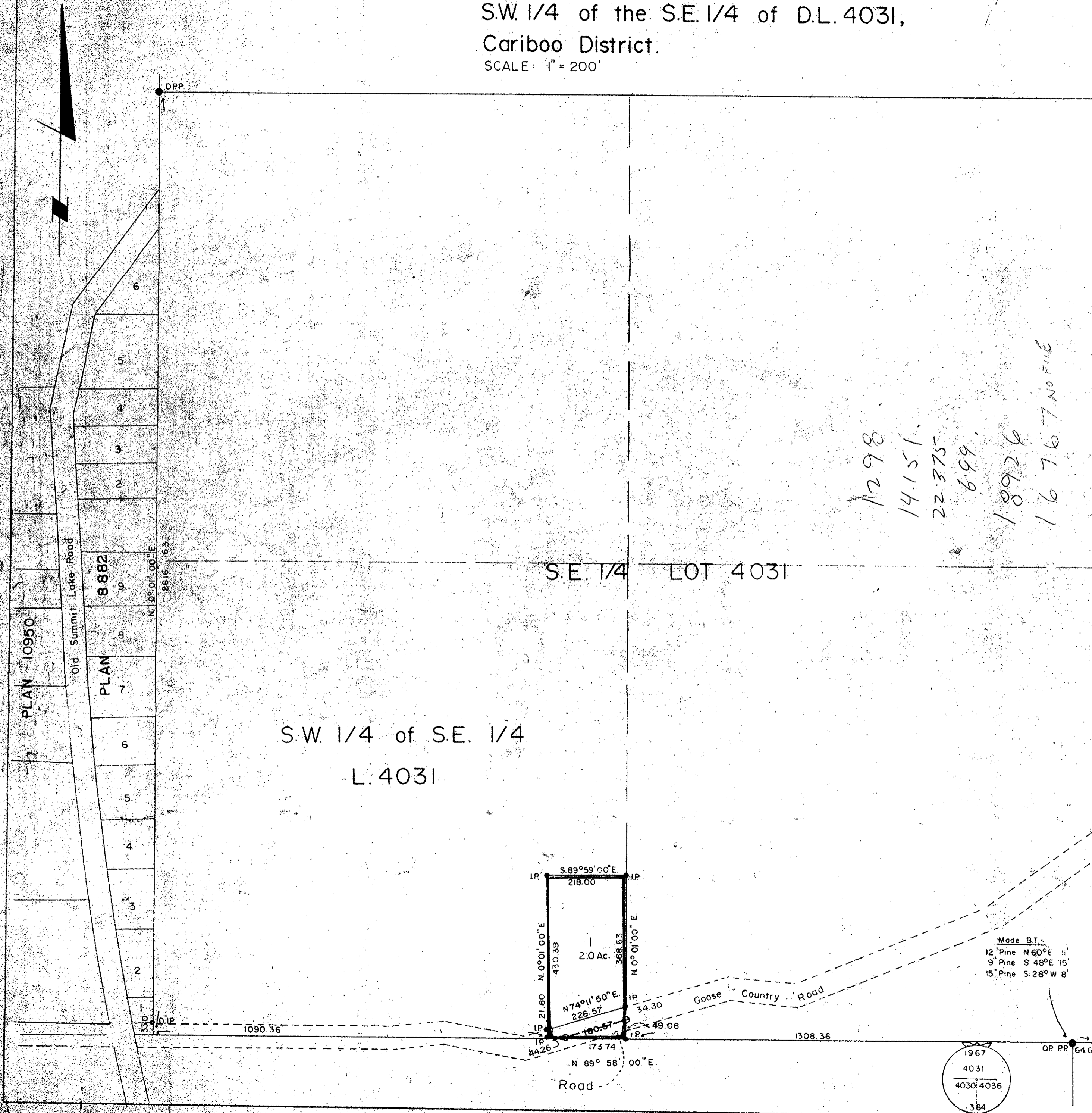
(KW)

PLAN No 18039

Deposited in the Land Registry Office at Prince George on the 20th day of May 1969

*[Signature]*  
Registrar

Plan of Subdivision of Part of the S.W. 1/4 of the S.E. 1/4 of D.L. 4031, Cariboo District.  
SCALE: 1" = 200'



L. 4034

S.E. 1/4 LOT 4031

S.W. 1/4 of S.E. 1/4 L. 4031

Bearings are astronomic and are derived from the W. Bdy. of the S.E. 1/4 L. 4031. Shown as N 0° 01' 00\" E. on Plan 8882.

- ⊙ P con Standard Concrete Post
- ⊙ P Rock Standard Rock Post
- PP Standard Pipe Post
- IP Standard Iron Post
- P Wooden Post
- L.P. Land Plug
- Denoting "Old"
- WT. Denoting "Witness"

I, F. J. Goble, of the City of Prince George, British Columbia, Land Surveyor, do hereby certify that I was present and did personally supervise the survey and that the survey was completed on the 13th day of October 1967.

Sworn before me at Prince George B.C. this 17th day of February 1969

Approved under the Land Registry Act on the 20th day of NOVEMBER 1968

*[Signature]*  
Approving Officer  
Dept. of Highways

*[Signature]*  
Commissioner for Lands and Forests  
of British Columbia

Re-Approved under the Land Registry Act on the 18th day of March 1969

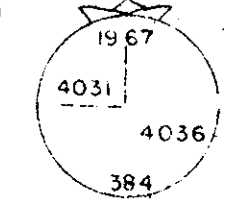
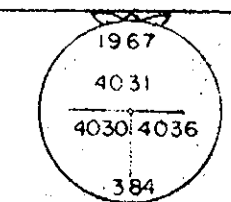
*[Signature]*  
Approving Officer  
Dept. of Highways

*[Signature]*  
Witness

L. 4036

Made B.T.s.  
12' Pine N 60° E 11'  
9' Pine S 48° E 15'  
15' Pine S 28° W 8'

Made B.T.s.  
14' Pine S 7° W 8'  
10' Pine West 20'  
12' Pine N 30° W 17'



REF. NO. 65346  
McWilliam - White - Goble & Associates  
B.C. Land Surveyors  
Prince George B.C.