



PLAN OF SUBDIVISION OF PART OF  
DISTRICT LOT 2400,  
CARIBOO DISTRICT.  
scale: 1" = 200'

PLAN No 17970

Deposited in the Land Registry Office  
AT PRINCE GEORGE on the 7 day of March, 1969

RECEIVED

*[Signature]*  
Registrar

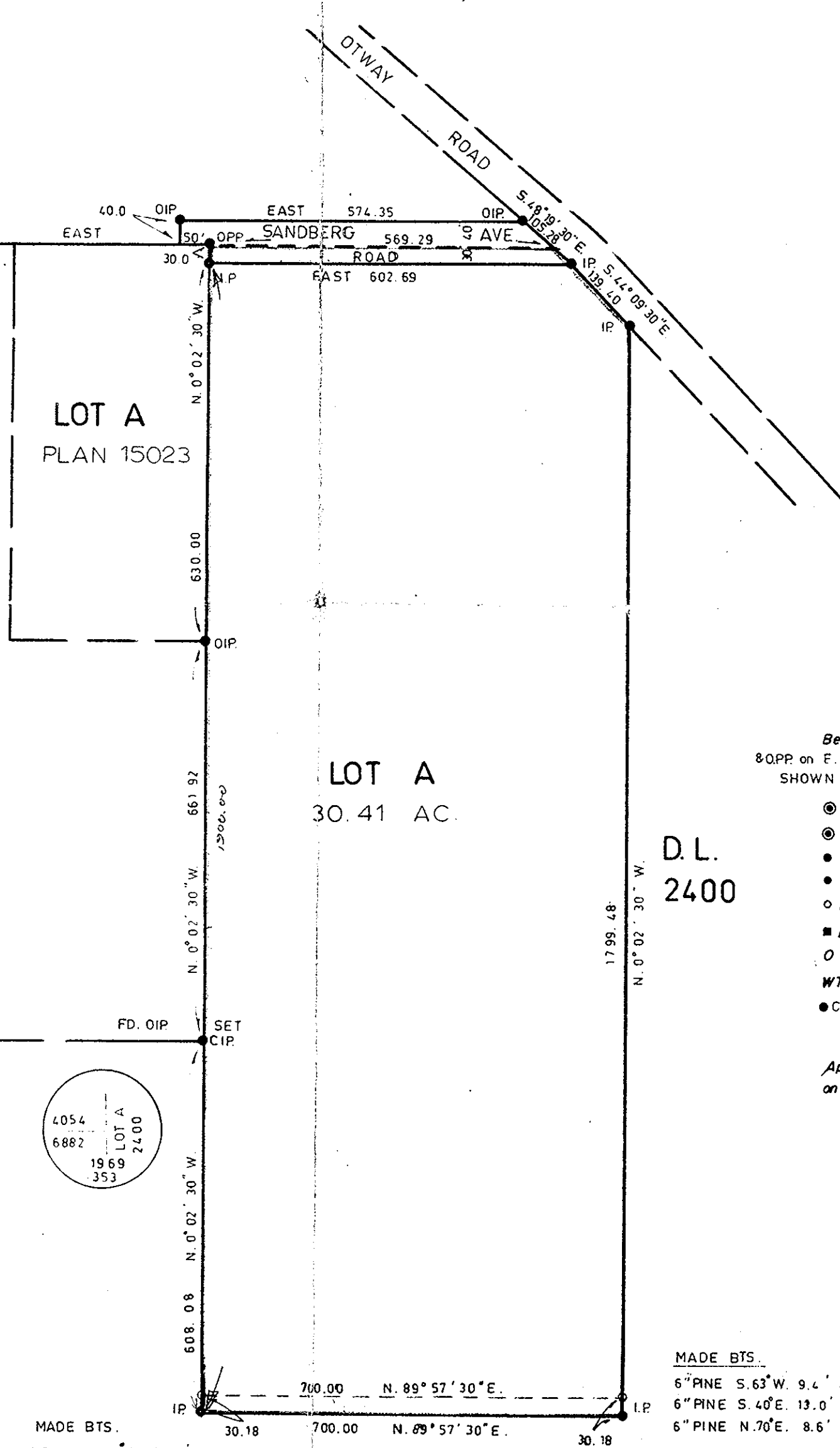
APR 16 1969

CITY ASSESSOR  
PRINCE GEORGE

D. L. 1531

D. L. 4054

D. L. 6882



Bearings are astronomic and are derived from QIPs  
80 P.P. on E. B.DY. D.L. 4054 AND E. B.DY. LOT A PL. 15023  
SHOWN AS N 0° 02' 30" W.

- R.con. .... Standard Concrete Post.
- P.Rock .... Standard Rock Post.
- P.P. .... Standard Pipe Post.
- I.P. .... Standard Iron Post.
- P. .... Wooden Post.
- L.P. .... Lead Plug.
- ..... Denoting "Old"
- WT. .... Denoting "Witness"
- CIP. .... Standard Iron Post capped.

Approved under the Land Registry Act  
on the 4<sup>th</sup> day of MAR. 1969.

*[Signature]*  
Approving Officer  
City of Prince George

I, A. DANILUCK... of the CITY OF PRINCE GEORGE  
British Columbia Land Surveyor, make oath and  
say that I was present at and did personally  
superintend the survey represented by this  
plan and that the survey and plan are correct.  
The said survey was completed on  
the ... day of FEBRUARY, 1969.

*[Signature]*

Sworn before me at PRINCE GEORGE,  
this 13 day of February, 1969.

*[Signature]*  
Commissioner for taking affidavits  
for British Columbia.

owner M & T ROCK & GRAVEL LTD.  
Per: *[Signature]* (Sec.)

Witness

MADE BTS.  
10" PINE N. 47° W. 12.4'  
10" BALSAM S. 39° E. 4.1'

MADE BTS.  
6" PINE S. 63° W. 9.4'  
6" PINE S. 40° E. 13.0'  
6" PINE N. 70° E. 8.6'

McWilliam - Whyte - Goble - Assoc.  
B. C. Land Surveyors  
Kamloops - Prince George.  
REF. NO. 69015