

D.L.

936

343

PLAN NO. 1796

DEPOSITED IN THE LAND REGISTRY OFFICE AT PRINCE GEORGE THIS ... DAY OF ... 19...

REGISTRAR

PLAN OF SUBDIVISION

PREPARED PURSUANT TO THE REPLOTTING PROVISIONS OF THE MUNICIPAL ACT OF PARCEL SHOWN OUTLINED IN RED ON REFERENCE PLAN ... OF:

- BLOCK 3 LOTS 1-24 INCLUSIVE
- " 4 " 1-24 "
- " 5 " 1-24 "
- " 6 " 1-24 "
- " 7 " 1-24 "
- " 8 " 1-24 "
- " 9 " 1-24 "
- " 10 " 1-24 "
- " 11 " 1-24 "
- " 12 " 1-24 "
- " 13 " 1-24 "
- " 14 " 2-29 INCLUSIVE AND

- RESIDUE OF LOTS 1, 30, 31 AND 32, BLOCK 15, LOTS 7-24 INCLUSIVE AND
- RESIDUE OF LOTS 4, 5, 6, 25, 26 AND 27, BLOCK 16 LOTS 1-24 INCLUSIVE
- " 17 " 1-24 "
- " 18 " 1-24 "
- " 19 " 1-24 "
- " 20 " 1-24 "
- " 21 " 1-24 "
- " 22 " 1-24 "
- " 23 " 1-24 "
- " 24 " 1-24 "
- " 25 " 1-24 "
- " 26 " 1-24 "
- " 27 " 1-24 "
- " 28 " 12-20 INCLUSIVE AND

- RESIDUE LOTS 9, 10, 11, 21 AND 22, BLOCK 29, LOT 16 AND RESIDUE OF LOTS 13, 14, 15, 17 AND 18, BLOCK 30 LOTS 1-24 INCLUSIVE
- " 31 " 1-24 "
- " 32 " 1-24 "
- " 33 " 1-24 "
- " 34 " 1-24 "
- " 35 " 1-24 "
- " 36 " 1-24 "
- " 37 " 1-24 "
- " 38 " 1-24 "
- " 39 " 1-24 "
- " 40 " 1-24 "
- " 41 " 3-20 INCLUSIVE AND

- RESIDUE LOTS 1, 2, 21, 22 AND 23, BLOCK 44, LOTS 8-14 INCLUSIVE AND
- RESIDUE LOTS 5, 6, 7, 15, 16 AND 17, BLOCK 45 LOTS 1-24 INCLUSIVE
- " 46 " 1-24 "
- " 47 " 1-24 "
- " 52 " 1-24 "
- " 53 " 1-24 "
- " 54 " 1-21 INCLUSIVE AND

- RESIDUE LOTS 22, 23 AND 24, BLOCK 55, RESIDUE LOTS 11 AND 12, RESIDUE PARCEL Y AND PARCEL Z, ALL ON PLAN 1085, DISTRICT LOT 1430
- RESIDUE PARCEL X, PLAN 696 AND BLOCK P, PLAN 10005, OF DISTRICT LOT 936.
- RESIDUE BLOCK A AND LOT 4 OF BLOCK B ALL ON PLAN 5566.
- BLOCK 1 LOTS 1-6 INCLUSIVE
- " 2 " 1-14 "
- " 3 " 1-16 "
- " 4 " 1 AND 2 "

- ALL ON PLAN 6931, PARK AREA LYING WEST OF HIGHWAY 16, PLAN 17401, ALL IN DISTRICT LOT 777.
- RESIDUE OF DISTRICT LOT 8170 AND ALL ROADS CONTAINED THERE-IN, CARIBOO DISTRICT
- SCALE: 1"=100'

I, A. MacLellan, the City of Prince George British Columbia Land Surveyor, being with me and in my presence and in the presence of the surveyors named in this plan and being the surveyor who has surveyed the same, do hereby certify that the same were surveyed and laid out in accordance with the provisions of the Land Survey Act, R.S.B.C. 1960, c. 248, and that the same were surveyed and laid out in accordance with the provisions of the Land Survey Act, R.S.B.C. 1960, c. 248, and that the same were surveyed and laid out in accordance with the provisions of the Land Survey Act, R.S.B.C. 1960, c. 248.

A. MacLellan  
S.L.S.

Sworn before me at Prince George this 21 day of ... 19...

Commissioner for Taking Affidavits for British Columbia

LEGEND  
Total area within red outline 151.52 Ac.  
Boundary line dimensions derived from GPS on the Northingly Bay of the By-Pass Hwy. Plan H-205.  
●IP--- Iron post set  
●IP--- Iron post found  
●IP--- Pipe post found  
●IP--- Post in concrete set  
●IP--- Post in concrete found  
●LP--- Lead Plug set  
●LP--- Lead Plug found  
Approved under the Land Registry Act this ... day of ... 19...

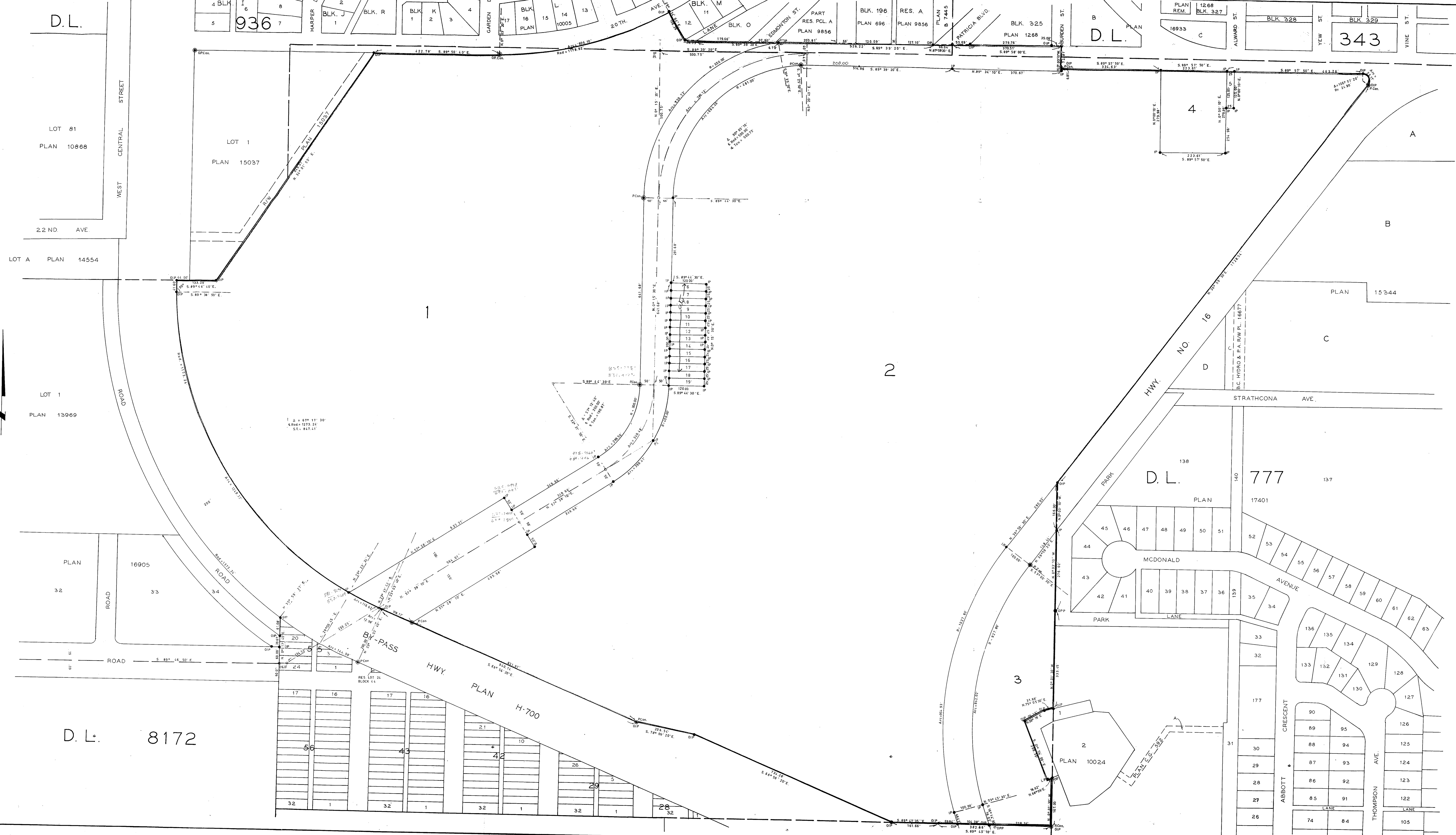
Approving Officer  
City of Prince George

The Seal of the Corporation of the City of Prince George was affixed hereto in the presence of:

Mayor

City Clerk

McWILLIAM, WHITE, GOBLE & ASSOCIATES  
B. C. LAND SURVEYORS  
PRINCE GEORGE, CANADA



LOT 81  
PLAN 10868

LOT 1  
PLAN 15037

4

A

B

PLAN 15344

C

D.L.

777

MCDONALD

AVENUE

PARK

LANE

CRESCENT

ABBOTT

THOMPSON

LANE

LANE

LANE

D.L. 8172

17

16

17

16

21

10

4

42

20

5

32

1

29

32

1

26

32

1

26

32

1

26

32

1

26

32

1

26

32

1

26