

PLAN OF SUBDIVISION OF  
PART OF THE S.W. 1/4 OF  
**DISTRICT LOT 4047**  
CARIBOO DISTRICT - BRITISH COLUMBIA

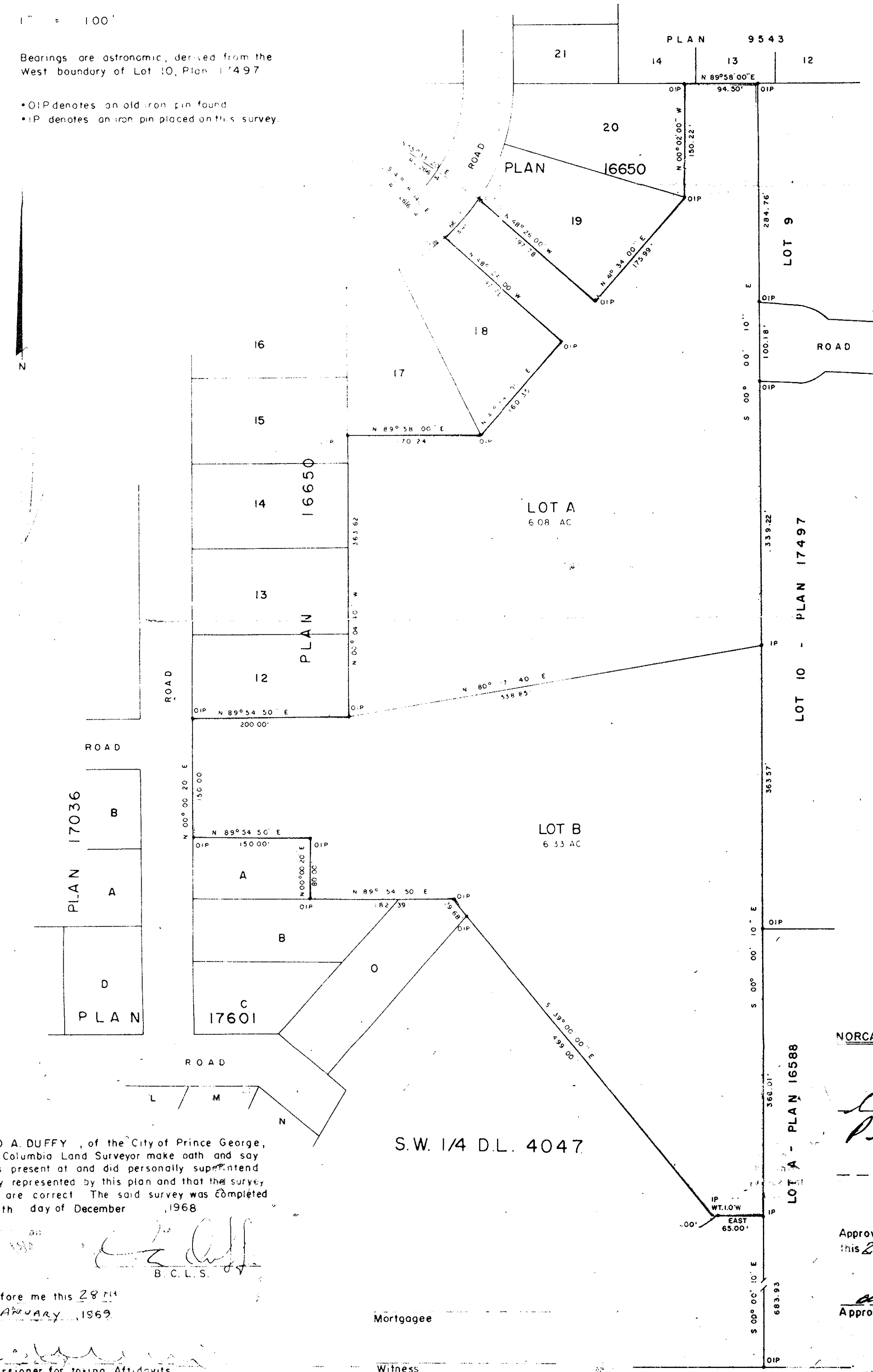
PLAN N<sup>o</sup> **17956**  
Deposited in the Land Registry  
Office at Prince George, B.C. this  
3 day of March, 1969

SCALE: 1" = 100'

NOTE: Bearings are astronomic, derived from the  
West boundary of Lot 10, Plan 17497

LEGEND: •OIP denotes an old iron pin found  
•IP denotes an iron pin placed on this survey.

Registrar *[Signature]*



I, DONALD A. DUFFY, of the City of Prince George, a British Columbia Land Surveyor make oath and say that I was present at and did personally superintend the survey represented by this plan and that the survey and plan are correct. The said survey was completed on the 6th day of December, 1968.

*[Signature of Donald A. Duffy]*  
B. C. L. S.

Sworn before me this 28<sup>th</sup>  
day of JANUARY, 1969

A Commissioner for taking Affidavits  
within the Province of British Columbia.

S.W. 1/4 D.L. 4047

Mortgagee

Witness

NORCAN DEVELOPMENT LTD.

*[Signature of L. C. Sadler]*  
President

Approved under the Land Registry Act  
this 24<sup>th</sup> day of JANUARY, 1969.

*[Signature of Approving Officer]*  
Approving Officer, Dept. of Highways.

N.W. 1/4 D.L. 4046

W. D. USHER & ASSOCIATES  
LAND SURVEYORS  
PRINCE GEORGE - B.C.  
CM 37-40 - 2454 A