

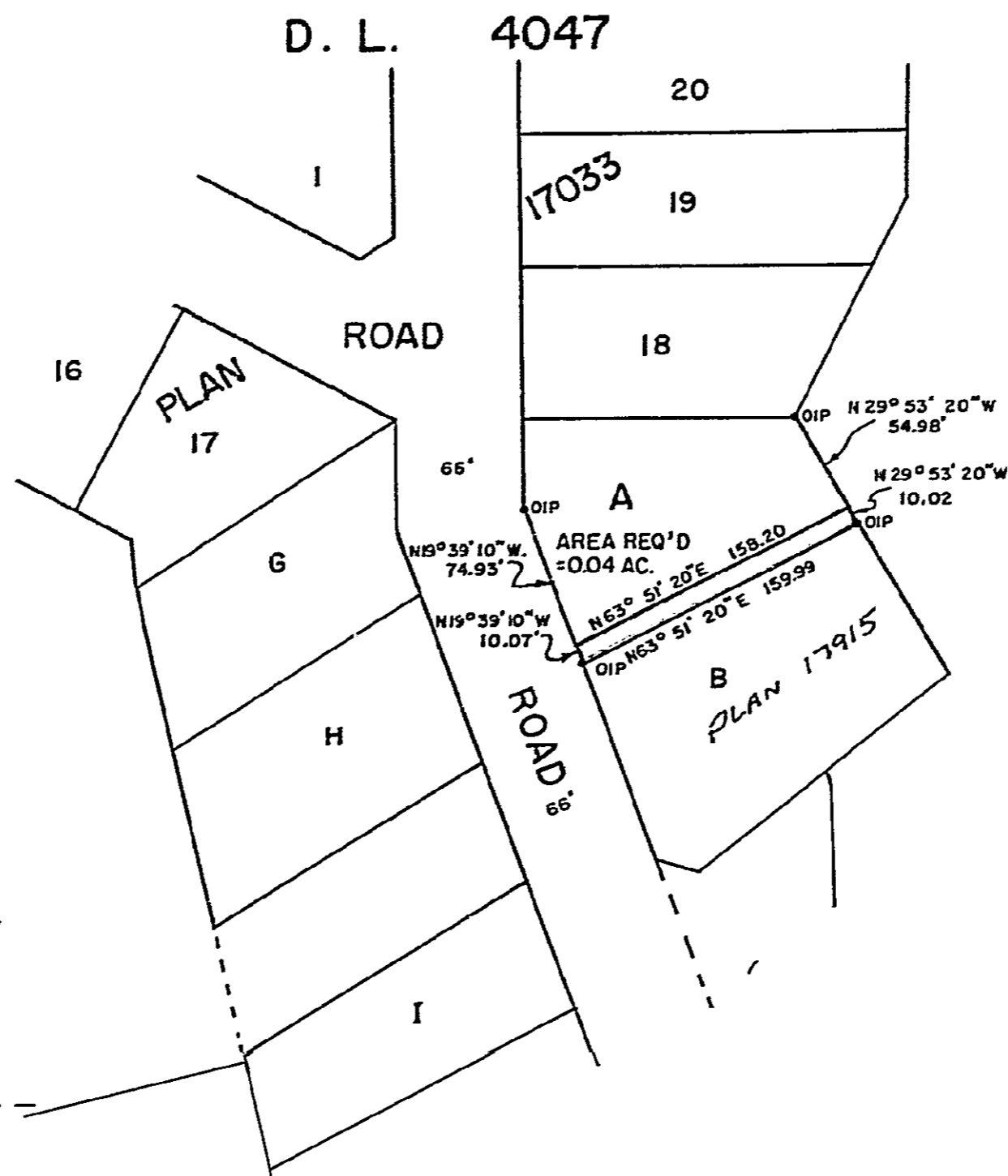
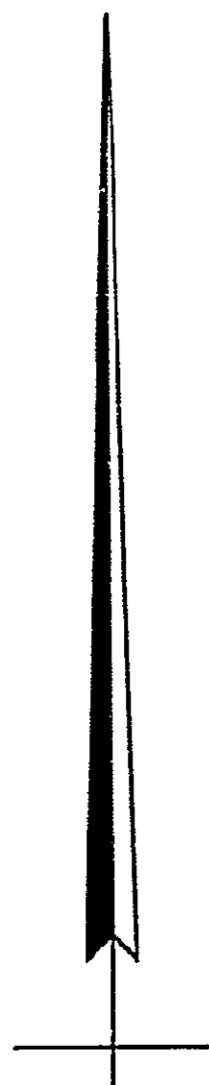
PLAN OF RIGHT-OF-WAY THROUGH
 LOT A - PLAN 17915
 DISTRICT LOT 4047
 CARIBOO DISTRICT - BRITISH COLUMBIA
 SCALE : 1" = 100'

NOTE: Bearings are astronomic, derived from
 the South boundary of Lot A, Plan 17915

LEGEND : • OIP Denotes an old iron pin found.

PLAN N^o 17916
 Deposited in the Land Registry
 Office at Prince George, B.C. this
 24 day of Jan 1968

[Signature]
 Registrar



A
 PLAN 15725

I, DONALD A. DUFFY, of the City of Prince George,
 a British Columbia Land Surveyor, make oath and say
 that I was present at and did personally superintend
 the survey represented by this plan, and that the survey
 and plan are correct. The said survey was completed
 on the 21st day of OCTOBER 1968.

Sworn before me this 22nd day of OCTOBER, 1968
 B.C.L.S.

[Signature]
 A Commissioner for taking affidavits
 within the Province of British Columbia.

S. E. 1/4 - D.L. 4047

S. E. 1/4 - D.L. 4047