

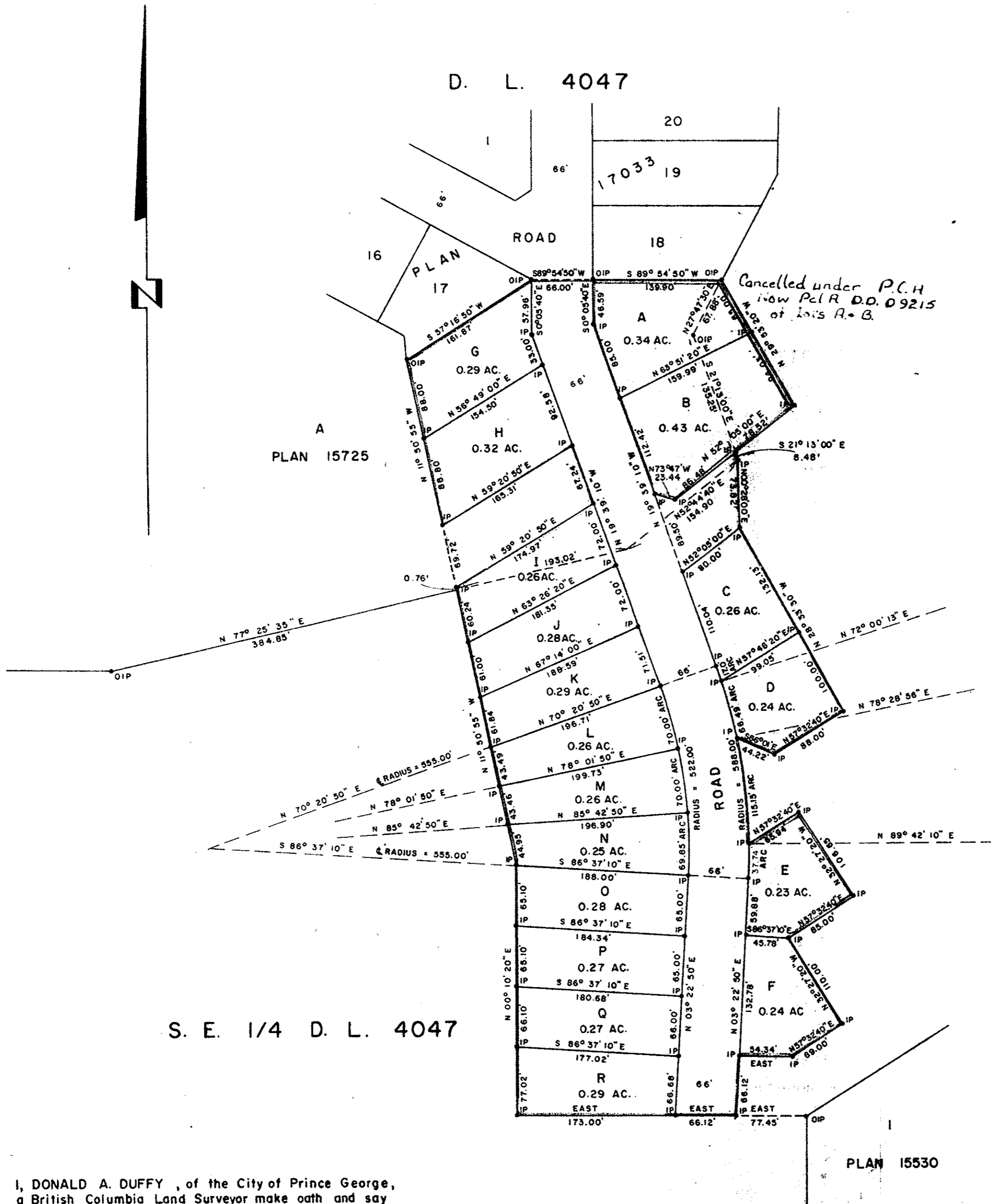
PLAN OF SUBDIVISION OF PARTS OF
 LOT A, PLAN 15725,
 DISTRICT LOT 4047 AND
 S. E. 1/4 DISTRICT LOT 4047
 CARIBOO DISTRICT - BRITISH COLUMBIA
 SCALE: 1" = 100'

PLAN No. 17915
 Deposited in the Land Registry
 Office at Prince George, B.C. this
24 day of Jan, 1962

Registrar [Signature]

NOTE: Bearings are astronomic, derived from the
 south boundary of Lot 18, Plan 17033.

LEGEND: ● OIP denotes an old iron pin found.
 ● IP denotes an iron pin placed on this survey.



S. E. 1/4 D. L. 4047

I, DONALD A. DUFFY, of the City of Prince George,
 a British Columbia Land Surveyor make oath and say
 that I was present at and did personally superintend
 the survey represented by this plan and that the survey
 and plan are correct. The said survey was completed
 on the 4TH day of OCTOBER, 1968.

[Signature]
 B. C. L. S.

Sworn before me this 22ND
 day of OCT, 1968

[Signature]
 A Commissioner for taking Affidavits
 within the Province of British Columbia.

BIRCHWOOD HOLDINGS LTD.

[Signature]



Approved under the Land Registry Act
 this 20TH day of NOVEMBER, 1968

[Signature]
 Approving Officer, Dept. of Highways.

W. D. USHER & ASSOCIATES
 LAND SURVEYORS
 PRINCE GEORGE - B. C.
 BT 60 & 76 2562