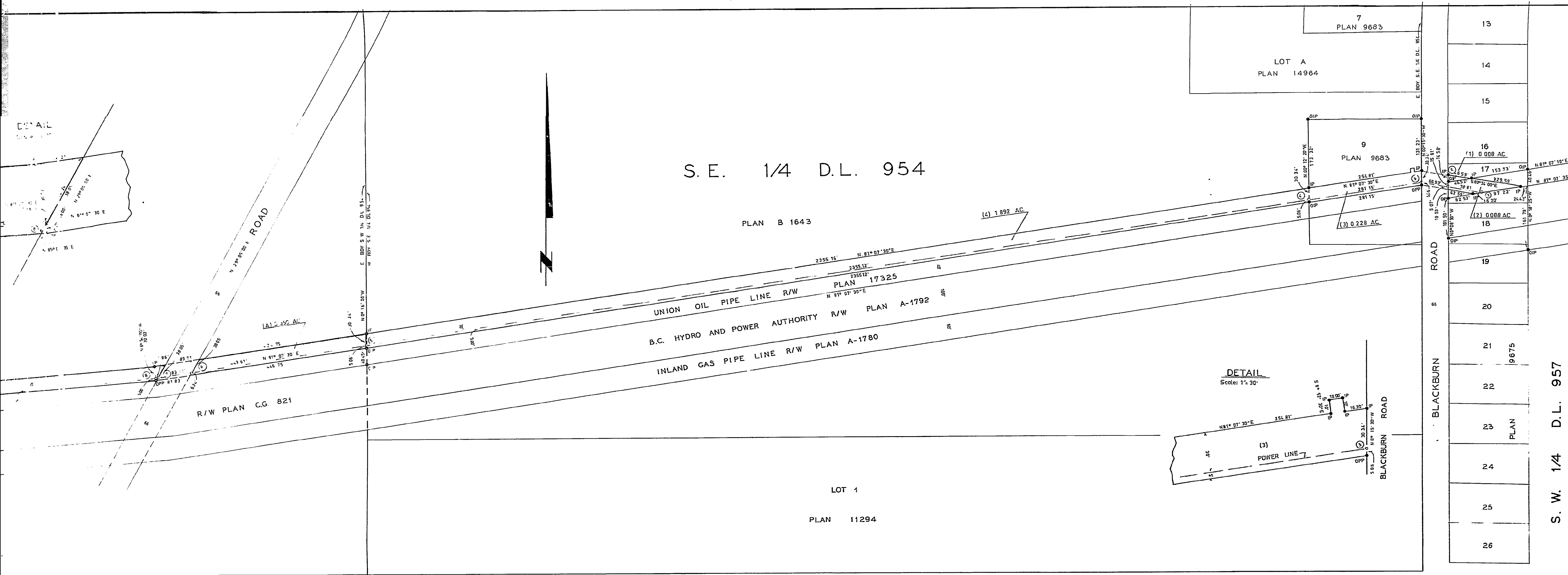


PLAN NO. 17370
 DEPOSITED IN THE LAND SURVEY OFFICE
 AT PRINCE GEORGE THIS DAY
 OF 1968
 REGISTRAR



LEGEND
 BEARINGS ARE ASTRONOMIC, DERIVED FROM THE NORTH BDY OF PLAN A-1792 WITHIN THE S.E. 1/4 OF D.L. 954, SHOWN AS N 81° 07' 30" E

- OPP - STANDARD PIPE POST FOUND
- PP - STANDARD PIPE POST SET
- DIP - STANDARD IRON POST FOUND
- P - STANDARD IRON POST SET
- PCON - POST IN CONCRETE SET

I. R. J. GOBLE, OF THE CITY OF PRINCE GEORGE, A BRITISH COLUMBIA LAND SURVEYOR, MAKE OATH AND SAY THAT I WAS PRESENT AT AND DID PERSONALLY SUPERVISE THE SURVEY REPRESENTED BY THIS PLAN, AND THAT THE SURVEY AND PLAN ARE CORRECT. THE SAID SURVEY WAS COMPLETED ON THE 14 DAY OF MARCH 1968.

R. J. GOBLE, B.C.L.S.

SWORN BEFORE ME THIS 25 DAY OF MARCH 1968
 Commissioner for Taking Affidavits for British Columbia
 APPROVED BRITISH COLUMBIA HYDRO AND POWER AUTHORITY

BRITISH COLUMBIA HYDRO AND POWER AUTHORITY
 WILLISTON - CANREED TRANSMISSION LINE
 SECOND CIRCUIT

PLAN OF RIGHT-OF-WAY THROUGH DISTRICT LOT 2155 AND THE SOUTH WEST 1/4 DISTRICT LOT 954 CARIBOO DISTRICT.
 SCALE: 1"=100'

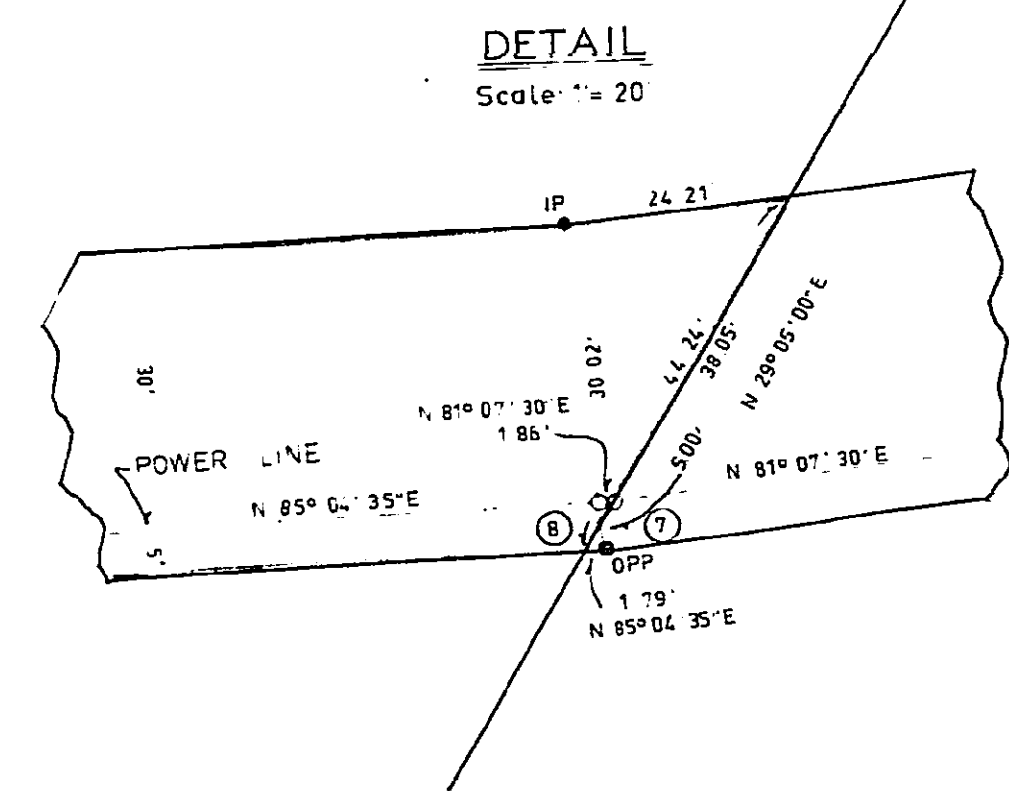
I hereby certify that this is a true copy of the Official Plan on deposit in the Department of Lands, Forests, and Water Resources and numbered Plan B Tube 873.
 Surveyor-General, Victoria, B.C.
 December 20, 1968

WILLIAM WHITE, GOBLE & ASSOCIATES
 B.C. LAND SURVEYORS
 PRINCE GEORGE, B.C.
 REF. NO. 680C2-II
 2-75-5-1-185 (2A-12)

BOOK OF REFERENCE				
CROWN LANDS				
R/W taken from:	W (t.n.c.)	Area sq ft	Area Acres	Total
(A) S.W. 1/4 D.L. 954	S.W. 1/4 E. OF ROAD	15251	0.350	2 058
(B)	S.W. 1/4 W. OF ROAD	74813	1.718	
(C)	D.L. 2155 E. OF ROAD	31070	0.713	2 285
(D)	D.L. 2155 W. OF ROAD	33130	0.761	
(E)	E. OF C.G. 2045	28916	0.664	
(F)	D.L. 2155	62	0.001	
(G)	PLAN 17317	5295	0.122	0.805
(H)	PLAN C.G. 633	228	0.005	
(I)	C.G. 2045	819	0.019	

TRAVERSE TABLE				
Sta	Bearing	Distance	Latitude	Departure
1			1358.42	1176.53
2	N 80° 54' 00" W	76.81	1876.92	1150.71
3	N 80° 54' 00" W	55.93	1881.52	1152.62
4	S 81° 07' 30" W	281.15	1139.76	1174.84
5		2355.12	1276.79	9819.91
6		44.381	1605.75	8581.61
7		83.71	1393.44	8498.90
8		186	1393.15	8497.06
9	S 85° 07' 35" W	2127.70	1210.53	6377.21
10	S 89° 07' 30" W	850.59	1137.51	5529.76
11	S 41° 42' 00" W	31.20	1114.25	5539.00
12		78.31	1057.23	5658.24
13		183.68	920.09	5326.05
14	S 70° 57' 30" W	27.48	911.12	5310.07
15		79.889	551.13	4958.78
16	S 70° 58' 45" W	861.39	370.39	3742.43

1/4 D.L. 954



S.E. 1/4 D.L. 954

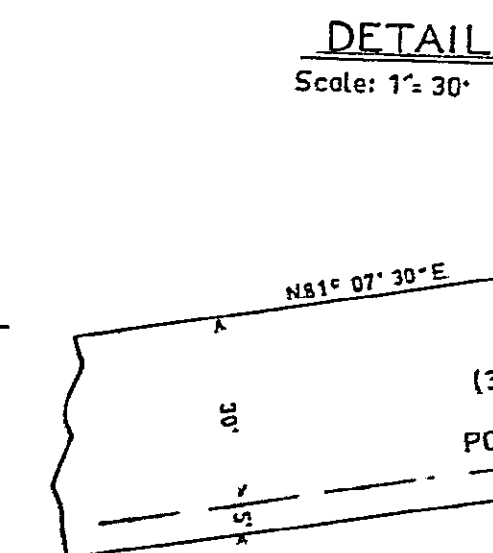
PLAN B 1643

UNION OIL PIPE LINE R/W
PLAN 17325

B.C. HYDRO AND POWER AUTHORITY R/W
PLAN A-1792

INLAND GAS PIPE LINE R/W
PLAN A-1780

R/W PLAN C.G. 821



LOT 4

PLAN 11294

ROAD

PLAN 1243

D.L. 632

BOOK OF REFERENCE

CROWN LANDS				
R/W taken from	Within	Area sq ft	Area Acres	Total
S.W. 1/4 D.L. 954 (A)	S.W. 1/4 E. OF ROAD	15251	0.350	2069
(B)	S.W. 1/4 W. OF ROAD	74813	1.718	
(C)	D.L. 2155 E. OF ROAD	31070	0.713	2285
(D)	D.L. 2155 W. OF ROAD	33130	0.761	
(E)	E. OF C.G. 2045	28916	0.664	2285
(F)	D.L. 2155 W. OF C.G. 2045	52	0.001	
(G)	PLAN 17317	5295	0.122	2285
(H)	PLAN C.G. 633	238	0.005	
(I)	C.G. 2045	819	0.019	

TRAVERSE TABLE

Sta	Bearing	Distance	Latitude	Departure
1			1658.27	1776.53
2	N 80° 54' 00" W	76.81	1576.33	1168.71
3	N 80° 54' 00" W	85.93	1881.52	1162.42
4	S 81° 07' 37" W	283.15	1138.14	11346.84
5		2355.12	1474.79	9019.91
6			44.381	1409.35
7			97.11	1393.44
8			1.86	1393.15
9	S 85° 04' 35" W	2127.70	1210.53	6377.21
10	S 85° 04' 30" W	850.59	1137.51	5529.76
11	S 41° 42' 00" W	37.20	1114.21	5509.00
12			76.31	1057.23
13			183.88	920.09
14	S 70° 57' 11" W	27.48	911.32	5315.07
15			796.89	651.13
16	S 70° 58' 45" W	861.39	370.28	3742.43

LEGEND
BEARINGS ARE ASTRONOMIC, DERIVED FROM THE NORTH END OF PLAN A-1792 WITHIN THE S.E. 1/4 OF D.L. 954, SHOWN AS N 81° 07' 33" E

- STANDAID PIPE POST FOUND
- STANDAID IRON POST FOUND
- STANDAID IRON POST SET
- STANDAID IRON POST SET
- POST IN CONCRETE SET

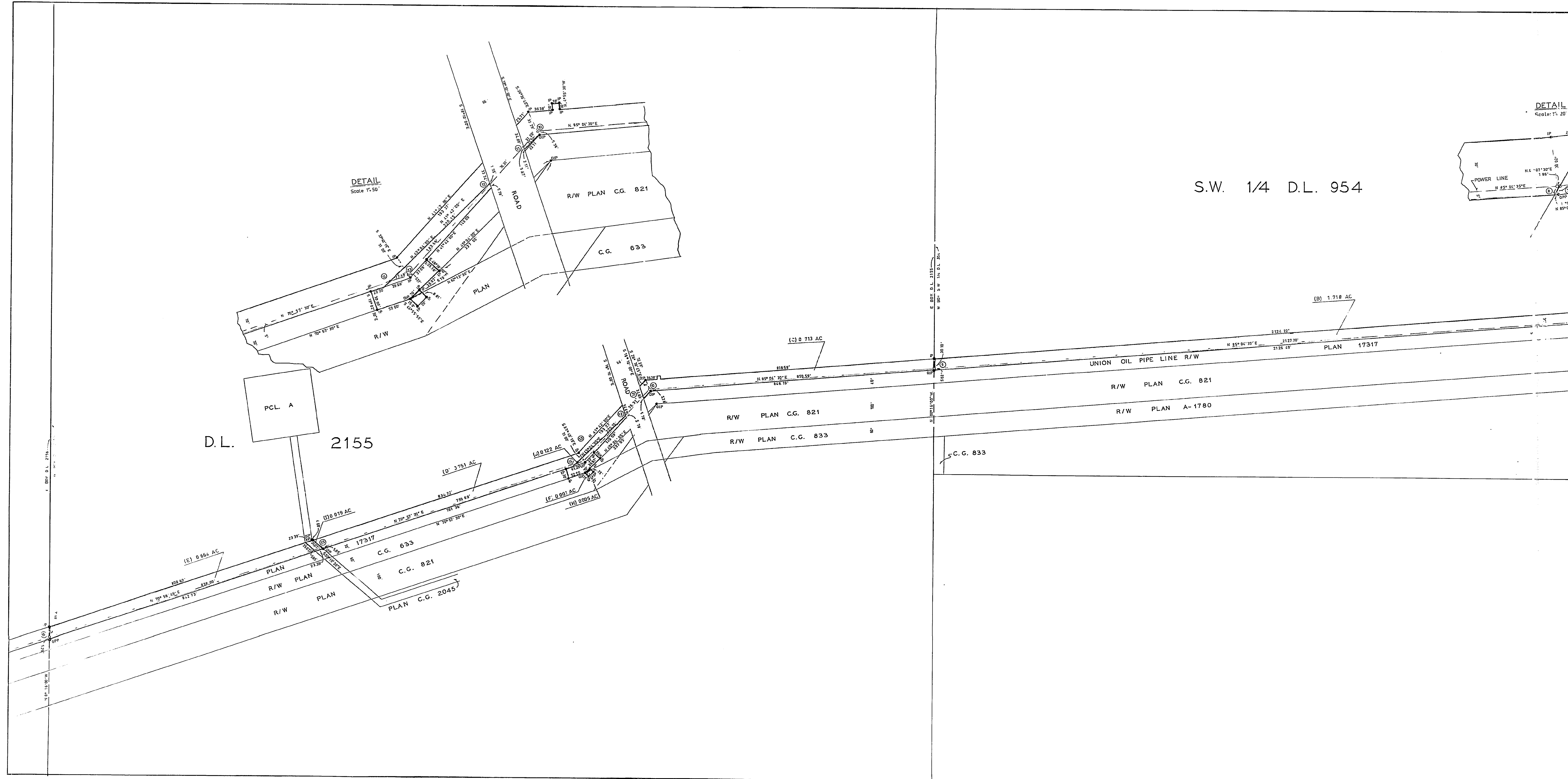
BRITISH COLUMBIA

WILLISTON-CANREED

SECC

PLAN OF DISTRICT LOT WEST 1/4 CARBOO DIS SCALE: 1"=100'

I hereby certify that this is a true copy of the Official Plan on deposit in the Department of Lands, Forests and Water Resources and numbered Plan 18 Tube 873.
Surveyor-General, Victoria, B.C.
December 20, 1968



DETAIL
Scale 1"=50'

DETAIL
Scale 1"=20'

S.W. 1/4 D.L. 954

D.L. 2155

PCL. A

R/W PLAN C.G. 821

C.G. 833

UNION OIL PIPE LINE R/W

R/W PLAN C.G. 821

R/W PLAN A-1780

(B) 1.718 AC

(N) 0.713 AC

R/W PLAN C.G. 821

R/W PLAN C.G. 833

C.G. 833

(D) 0.751 AC

(K) 0.122 AC

(L) 0.001 AC

(M) 0.005 AC

(E) 0.654 AC

(I) 0.019 AC

(J) 0.019 AC

(H) 0.005 AC

(G) 0.005 AC

(F) 0.001 AC

(A) 0.001 AC

(C) 0.001 AC

(D) 0.001 AC

(E) 0.001 AC

(F) 0.001 AC

(G) 0.001 AC

(H) 0.001 AC

(I) 0.001 AC

(J) 0.001 AC

(K) 0.001 AC

(L) 0.001 AC

(M) 0.001 AC

(N) 0.001 AC

(O) 0.001 AC

(P) 0.001 AC

(Q) 0.001 AC

(R) 0.001 AC

(S) 0.001 AC

(T) 0.001 AC

(U) 0.001 AC

(V) 0.001 AC

(W) 0.001 AC

(X) 0.001 AC

(Y) 0.001 AC

(Z) 0.001 AC