

PLAN OF SUBDIVISION
OF PART OF LOT 'A', PLAN 16544
DISTRICT LOT 4025
CARIBOO DISTRICT

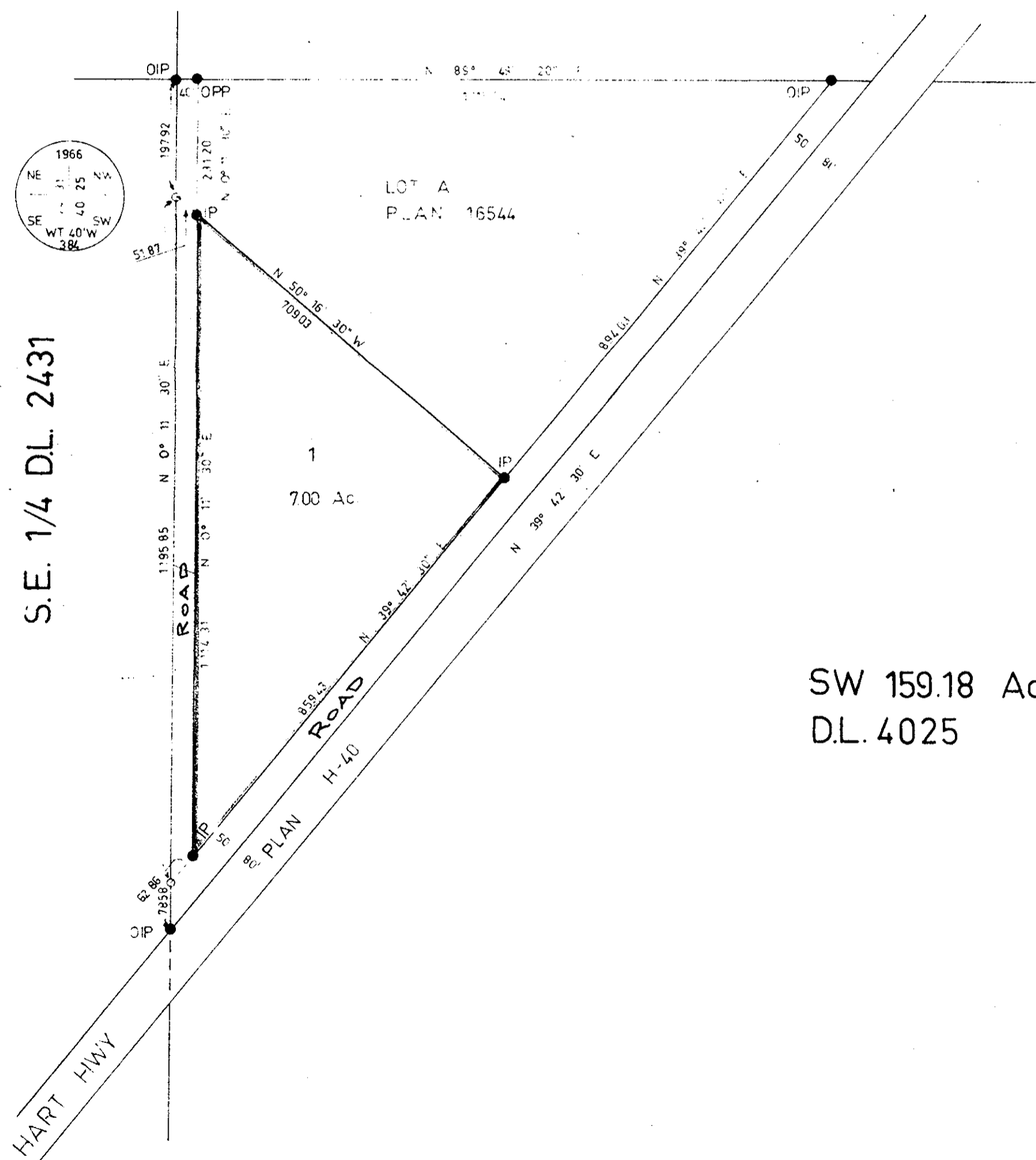
SCALE 1" = 200'

PLAN NO. 17865

DEPT. OF LAND SURVEY OFFICE
OF PRINCE GEORGE ON THE 17. DAY OF DEC. 1968

T. H. Tabor
REGISTRAR

NW 1/4
D.L. 4025



S.E. 1/4 D.L. 2431

SW 159.18 Acres
D.L. 4025

Bearings are astronomic and are derived from
Easterly Bay of Lot A, PLAN 16544, shown as
N 39° 42' 30" E.

- ⊙ Pcon Standard Concrete Post
- ⊙ P Rock Standard Rock Post
- PP Standard Pipe Post
- IP Standard Iron Post
- P Wooden Post
- LP Lead Plug
- Denoting "Old"
- WT Denoting "Witness"

I, V. BARTELL, of the CITY of PRINCE GEORGE,
British Columbia Land Surveyor, make oath and
say that I was present at and did personally
superintend the survey represented by this
plan and that the survey and plan are correct.
The said survey was completed on
the 6th day of November 1968.

V. Bartell
V. BARTELL B.C.L.S.

Sworn before me at PRINCE GEORGE
this 6th day of November 1968.

Approved under the Land Registry Act
on the 5th day of December 1968.

W. H. Wall
Approving Officer

W. H. Wall
A Commissioner for taking affidavits
within British Columbia.
Owner *M. H. Wall*
J. R. Wall
Witness *W. H. Wall*

McWilliam — Whyte — Serle — Gobie
B.C. Land Surveyors
Kamloops — Prince George
REF. NO. 68050