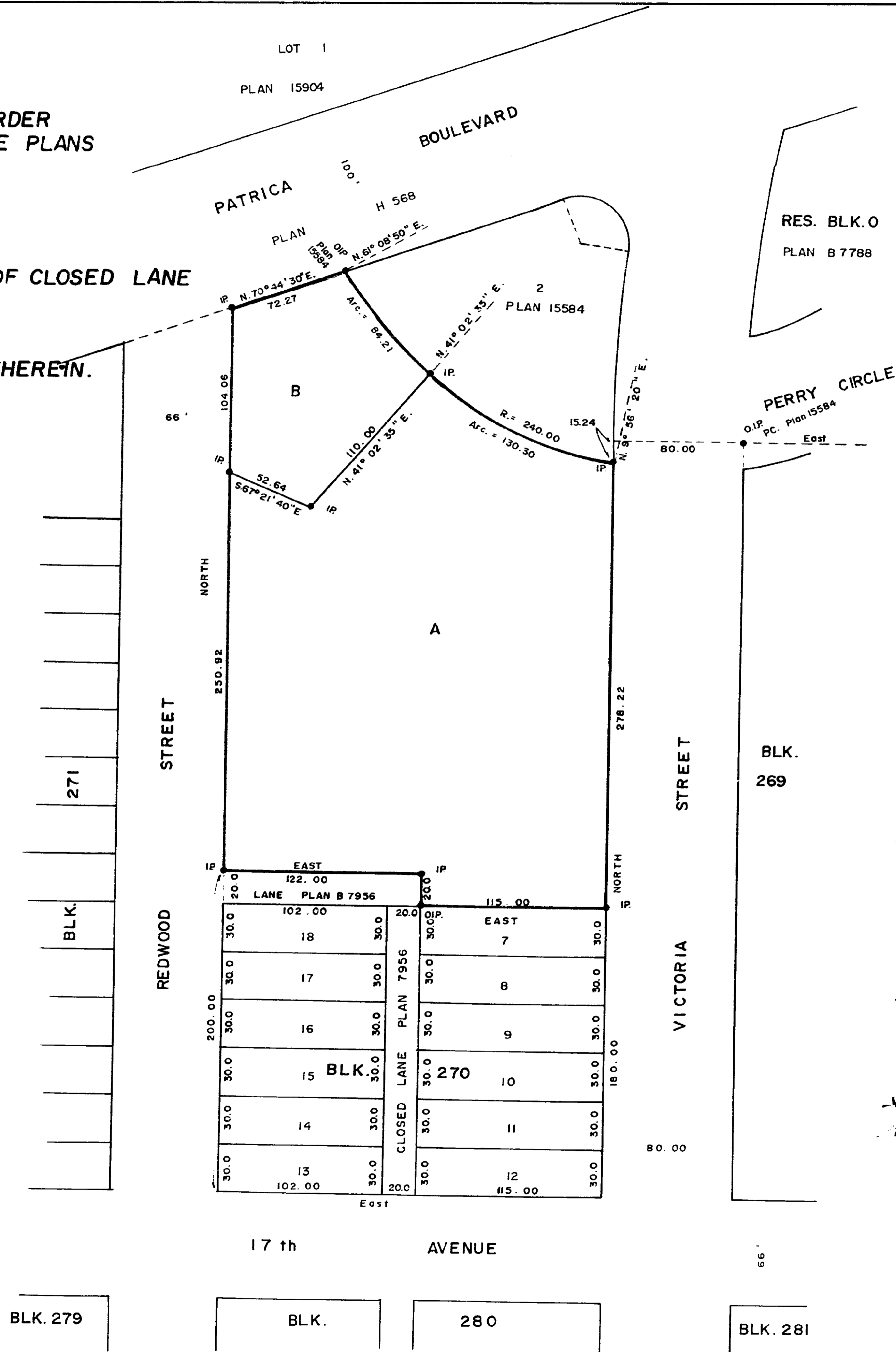


**SUBDIVISION PLAN  
TO ACCOMPANY THE ORDER  
MADE PURSUANT TO THE PLANS  
CANCELLATION ACT OF:  
LOTS 1-6 INCLUSIVE  
LOTS 20-24 INCLUSIVE  
LOTS 25-30 INCLUSIVE  
AND ALL THAT PORTION OF CLOSED LANE  
SHOWN ON PLAN 17652.  
BLOCK 270, PLAN 1268,  
AND LANE CONTAINED THEREIN.  
DISTRICT LOT 343,  
CARIBOO DISTRICT.**

scale : 1" = 50'



**PLAN No 17845**

Deposited in the Land Registry Office at  
Prince George on the 4th day of Dec. 1968.

*[Signature]*  
Regist. Registrar.

RES. BLK. 0  
PLAN B 7788

PERRY CIRCLE  
O.I.P. PC. Plan 15584  
East

BLK. 269

- Bearings are astronomic and are derived from  
OIP's NE BK 280 and PG East limited of  
Victoria St. Plans 15584 and DF. 46255
- P.con. .... Standard Concrete Post.
  - P.Rock ..... Standard Rock Post.
  - IP ..... Standard Pipe Post.
  - LP ..... Standard Iron Post.
  - P. .... Wooden Post.
  - L.P. .... Lead Plug.
  - ..... Denoting "Old"
  - WT. .... Denoting "Witness"

I, R.J. Goble... of the ... City of Prince George  
British Columbia Land Surveyor, make oath and  
say that I was present at and did personally  
superintend the survey represented by this  
plan and that the survey and plan are correct.  
The said survey was completed on  
the 12th day of November 1968

Sworn before me at Prince George, B.C.  
this 13th day of November 1968.

*[Signature]*  
Commissioner for taking affidavits  
for British Columbia.

Approved under the Land Registry Act  
on the 14th day of Nov. 1968.

*[Signature]*  
Approving Officer

VANNESS INVESTMENT CORPORATION LTD  
*[Signature]*

OVERWATERA LIMITED  
PER *[Signature]* PRES

*[Signature]*

SEAL

SEAL

BLK. 279

BLK.

280

BLK. 281