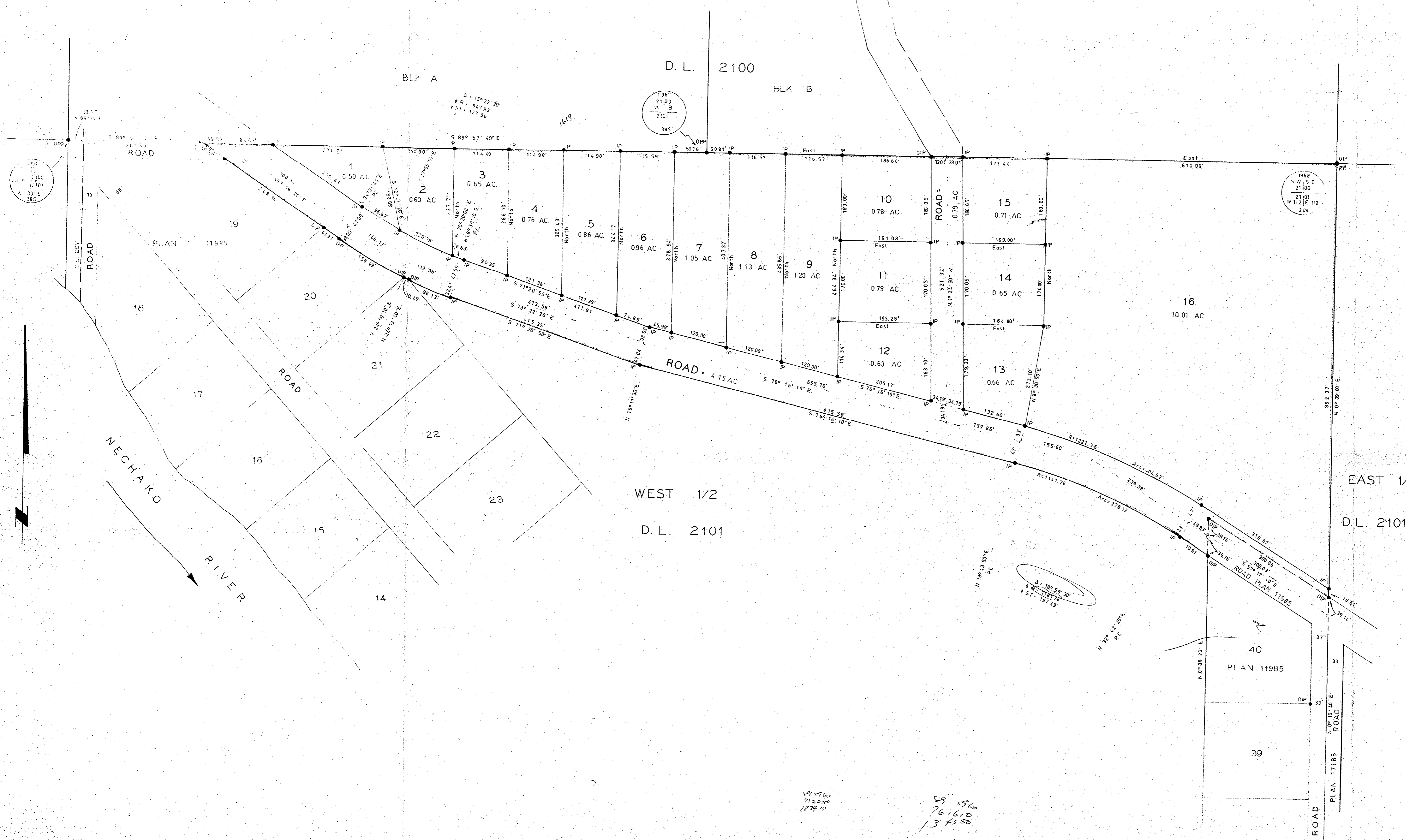


PLAN OF SUBDIVISION OF  
PART OF THE WEST 1/2  
OF DISTRICT LOT 2101  
CARIBOO DISTRICT.

SCALE: 1"=100'

PLAN NO. 17718

Registered in the Land Registry Office of  
Prince George this 26 day  
of August 1968  
Registrar



LEGEND  
Bearings are astronomic derived from  
Northernly bay of lot 40 plan 11985  
shown as S 57°17'40"E  
●OPP-----Standard pipe post set  
●IP-----Standard iron bar set  
●OIP-----Standard iron bar found

Approved under the Land Registry Act  
on the 26 day of August 1968

*W. Bartell*  
V. Bartell  
B.C.L.S.  
Commissioner for Taking Affidavits for  
British Columbia  
Witness  
Owner  
Witness

MCWILLIAM, WHYTE, GOBLE & ASSOCIATES  
B.C. LAND SURVEYORS  
PRINCE GEORGE, KAMLOOPS  
REF. NO. 67369