

S.E. 1/4 D.L. 954

PLAN B 1643

LOT A
PLAN 14964

UNION OIL PIPE LINE R/W PLAN 17325
B.C. HYDRO AND POWER AUTHORITY R/W PLAN A-1792
INLAND GAS PIPE LINE R/W PLAN A-1780

LOT 1
PLAN 11294

ROAD

PLAN 1243

14

D.L. 632

11

15

10

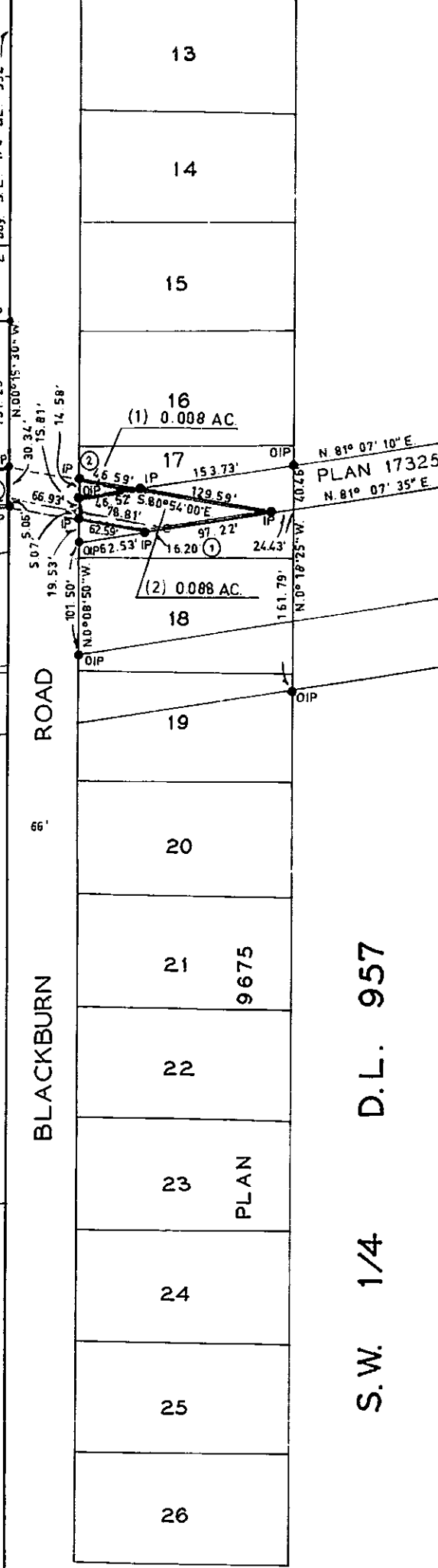
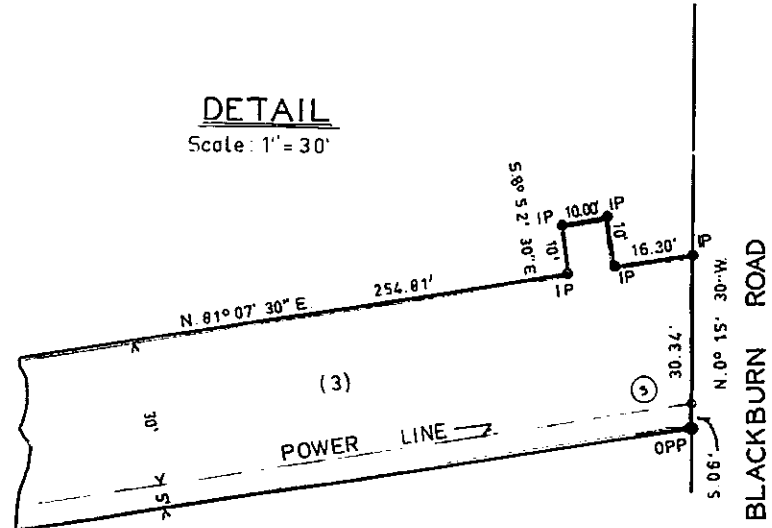
16

BOOK OF REFERENCE

PRIVATE LANDS

R/W taken from	Within	Area sq ft	Area Acres	Total
LOT 17 PLAN 9675(1)	LOT 17 PLAN 9675	335	0.008	0.096
S.W. 1/4 D.L. 957 (2)	PLAN 17325	3845	0.088	
LOT 9 PLAN 9683 (3)	LOT 9 PLAN 9683	9942	0.228	0.228
S.E. 1/4 D.L. 954				
S.E. 1/4 D.L. 954 (4)	S.E. 1/4 D.L. 954	82430	1.892	1.892
PLAN B 1643	PLAN B 1643			
(5) D.L. 2156	D.L. 2156	78207	1.795	
(6) PLAN A 1798	PLAN A 1798	510	0.012	
(7) PLAN A 1788	PLAN A 1788	8017	0.183	2.027
(8) PLAN 17325	PLAN 17325	2985	0.068	
(9) PLAN 17325	PLAN 17325	590	0.014	
PLAN A 108 (10)	PLAN A 108	760	0.017	0.169
D.L. 2156 (11)	PLAN A 108	6624	0.152	
LOT A PLAN 5589(12)	LOT A PLAN 5589	8501	0.195	
D.L. 2156 (13)	PLAN A 1788	329	0.008	0.256
(14)	PLAN A 1225	2324	0.053	

Sta	Bearing	Distance	Latitude	Departure
1	N 80° 5' 40" E	78.91	1958.47	11768.53
2	N 80° 5' 40" E	870.93	11590.71	11624.62
3	N 80° 5' 40" W	66.93	1081.52	11346.84
4	S 81° 07' 30" W	281.15	1138.14	11346.84
5	"	2355.12	1474.79	9019.91
6	"	443.51	140.635	8581.51
7	"	83.71	139.344	8439.90
8	"	1.86	139.315	8437.86
9	S 85° 04' 35" W	212.70	1210.59	6372.21
10	S 85° 04' 30" W	850.59	1137.51	5523.76
11	S 41° 42' 00" W	31.20	111.421	5509.00
12	"	74.31	1057.23	5458.24
13	"	183.68	920.09	5334.05
14	S 70° 57' 30" W	274.8	911.12	5310.07
15	"	796.89	651.13	4556.79
16	S 70° 58' 45" W	861.39	370.39	3742.43
17	S 70° 59' 40" W	384.01	245.33	3379.35
18	N 66° 59' 20" W	1190.81	710.83	2283.29
19	N 78° 17' 25" W	2551	716.01	2258.31
20	"	54.15	727.00	2205.29
21	"	98.74	747.04	2108.61
22	"	310.81	810.12	1804.27
23	N 82° 28' 05" W	351.19	856.15	1456.11
24	"	161.54	877.32	1295.96
25	N 68° 33' 40" W	1365.4	927.23	1168.87
26	"	47.80	944.70	1124.38
27	"	52.92	964.04	1075.12
28	"	4.672	981.12	1031.63
29	"	606.1	1003.27	975.21



PLAN No. 17717
DEPOSITED IN THE LAND REGISTRY OFFICE
AT PRINCE GEORGE THIS 22 DAY
OF MARCH 1968
REGISTRAR

LEGEND
BEARINGS ARE ASTRONOMIC DERIVED FROM THE NORTH BOY OF PLAN A-1792 WITHIN THE S.E. 1/4 OF D.L. 954 SHOWN AS N. 81° 07' 30" E.
● OPP - STANDARD PIPE POST FOUND.
● PP - STANDARD PIPE POST SET.
● OIP - STANDARD IRON POST FOUND.
● IP - STANDARD IRON POST SET.
● PCON - POST IN CONCRETE SET.

I, R. J. GOBLE, OF THE CITY OF PRINCE GEORGE, A BRITISH COLUMBIA LAND SURVEYOR, MAKE OATH AND SAY THAT I WAS PRESENT AT AND DID PERSONALLY SUPERINTEND THE SURVEY REPRESENTED BY THIS PLAN, AND THAT THE SURVEY AND PLAN ARE CORRECT. THE SAID SURVEY WAS COMPLETED ON THE 21 DAY OF MARCH 1968.
R. J. GOBLE. B.C.L.S.

SWORN BEFORE ME THIS 25 DAY OF MARCH 1968

COMMISSIONER FOR TAKING AFFIDAVITS FOR BRITISH COLUMBIA.

APPROVED: BRITISH COLUMBIA HYDRO AND POWER AUTHORITY.

BRITISH COLUMBIA HYDRO AND POWER AUTHORITY

WILLISTON - CANREED TRANSMISSION LINE

SECOND CIRCUIT

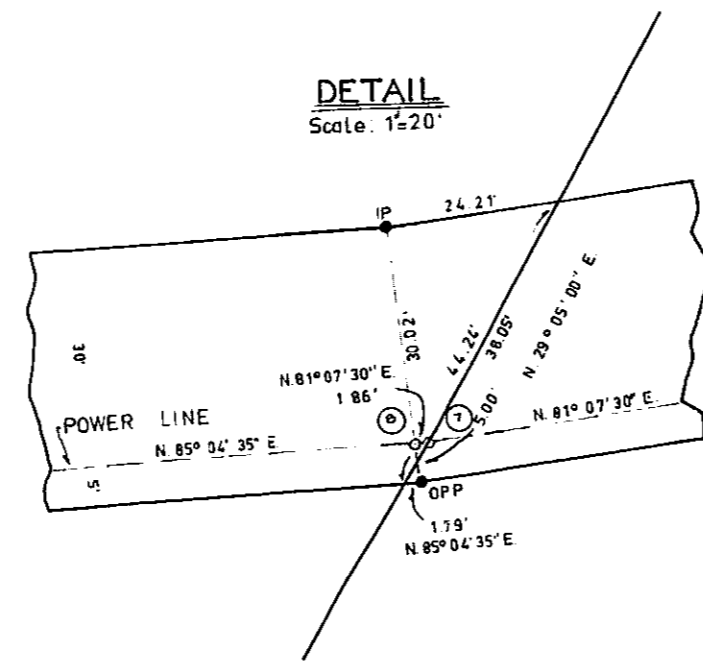
PLAN OF RIGHT-OF-WAY THROUGH
THE SOUTH WEST 1/4 DISTRICT LOT 957,
THE SOUTH EAST 1/4 DISTRICT LOT 954,
AND DISTRICT LOT 2156,
CARIBOO DISTRICT.

SCALE: 1"=100'

MCWILLIAM, WHYTE, GOBLE & ASSOCIATES.
B.C. LAND SURVEYORS
PRINCE GEORGE, KAMLOOPS.

REF. NO. 68002-I

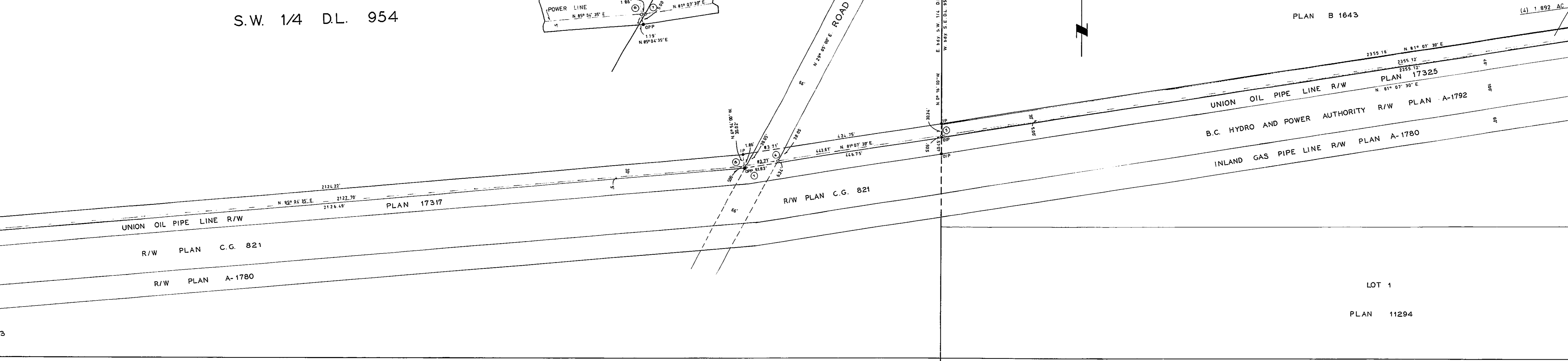
S.W. 1/4 D.L. 954



S.E. 1/4 D.L. 954

PLAN B 1643

(4) 1.892 AC

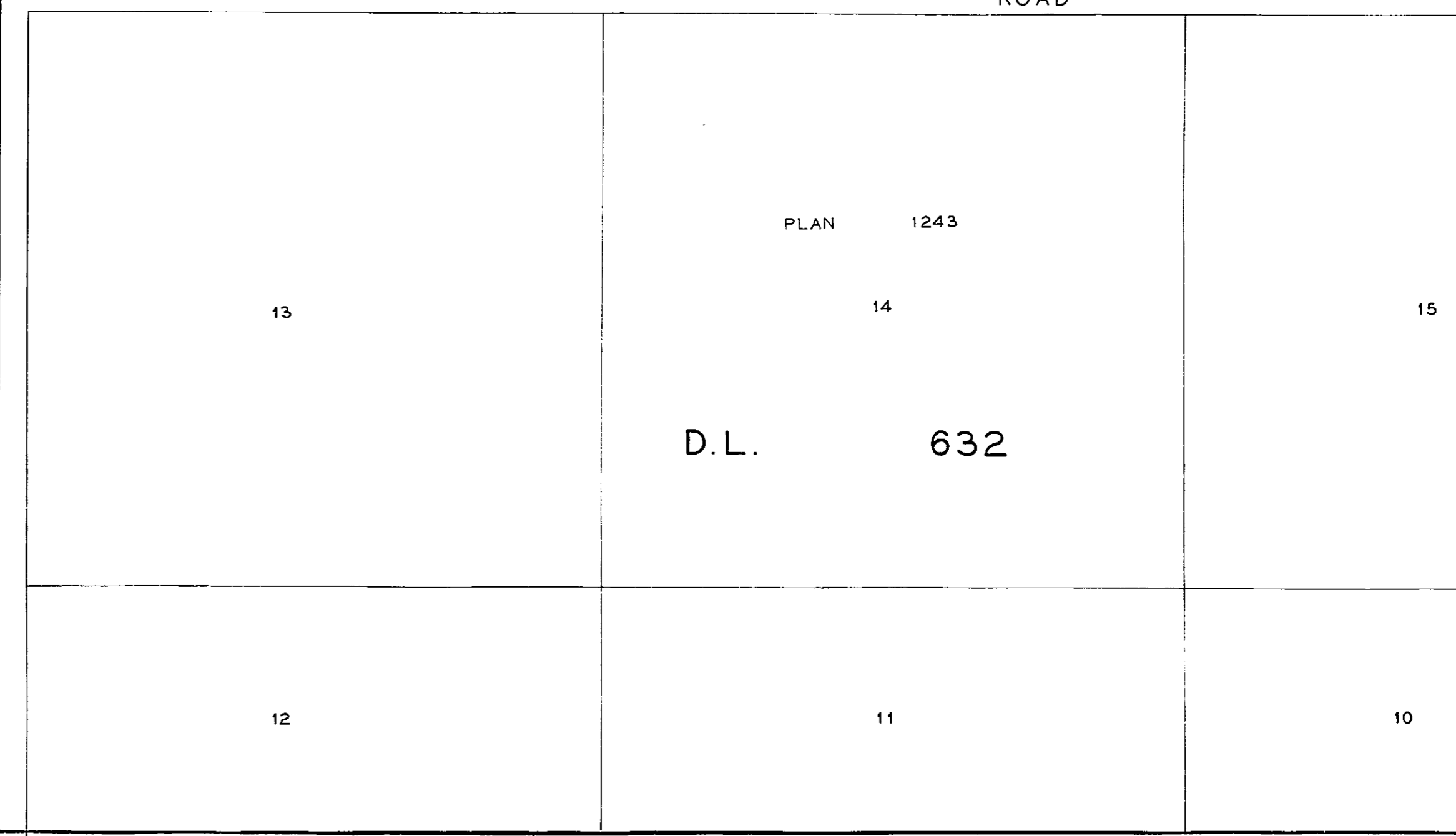


UNION OIL PIPE LINE R/W PLAN 17325
 B.C. HYDRO AND POWER AUTHORITY R/W PLAN A-1792
 INLAND GAS PIPE LINE R/W PLAN A-1780

LOT 1

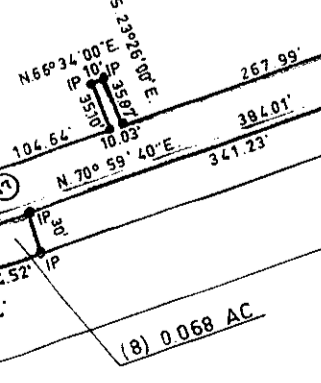
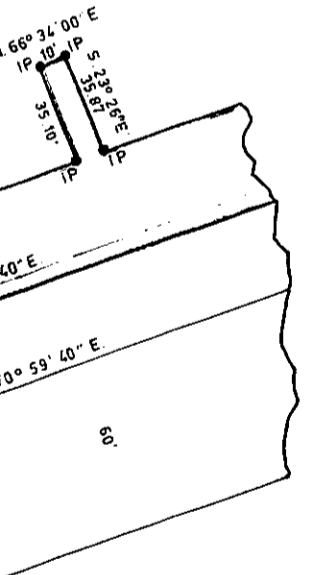
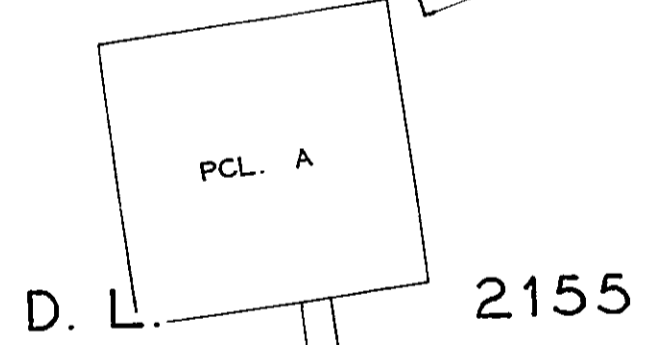
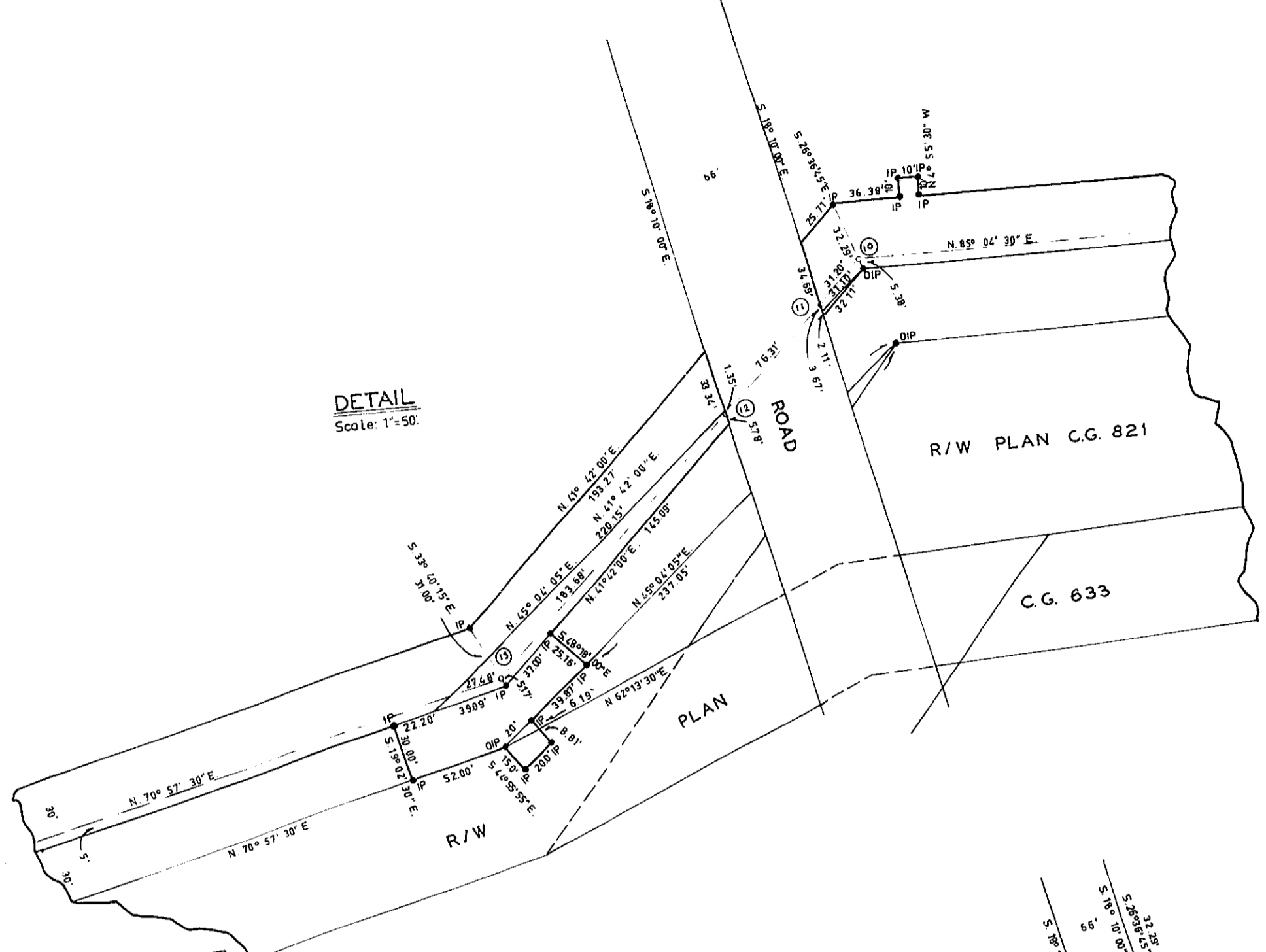
PLAN 11294

ROAD



S.W. 1/4 D.L.

DETAIL
Scale: 1"=50'



E 844' D.L. 2155
W 844' D.L. 2155

E 844' D.L. 2155
W 844' S.W. 1/4 D.L. 956

UNION OIL PIPE LINE R/W

R/W PLAN C.G. 821

R/W PLAN A-1780

R/W PLAN C.G. 821

R/W PLAN C.G. 633

C.G. 833

PLAN 17317

C.G. 633

C.G. 821

PLAN C.G. 2045

R/W PLAN

R/W PLAN

R/W PLAN

R/W PLAN

R/W PLAN

R/W PLAN

R/W PLAN

R/W PLAN

R/W PLAN

R/W PLAN

R/W PLAN

R/W PLAN

R/W PLAN

R/W PLAN

R/W PLAN

R/W PLAN

R/W PLAN

R/W PLAN

R/W PLAN

R/W PLAN

R/W PLAN

R/W PLAN

R/W PLAN

R/W PLAN

R/W PLAN

R/W PLAN

R/W PLAN

R/W PLAN

R/W PLAN

R/W PLAN

R/W PLAN

R/W PLAN

R/W PLAN

R/W PLAN

R/W PLAN

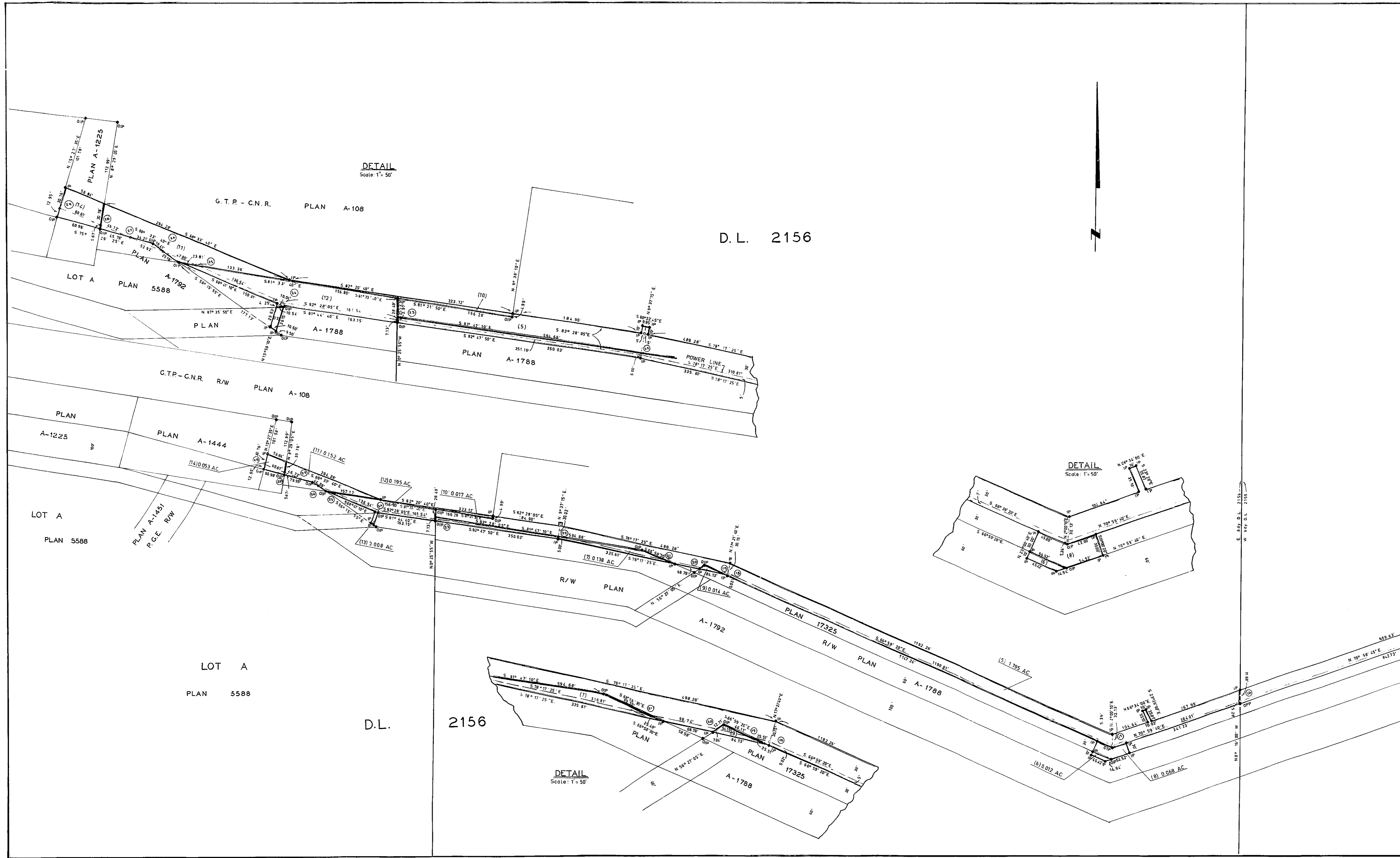
R/W PLAN

R/W PLAN

R/W PLAN

R/W PLAN

R/W PLAN



DETAIL
Scale: 1" = 50'

D.L. 2156

DETAIL
Scale: 1" = 50'

DETAIL
Scale: 1" = 50'

LOT A
PLAN 5588

D.L.

2156

E 105° 59' 40" E
W 105° 59' 40" W

E 105° 59' 40" E
W 105° 59' 40" W