

B.C. HYDRO AND POWER AUTHORITY PATRICIA - CHIEF LAKE TRANSMISSION LINE

PLAN OF RIGHT-OF-WAY THROUGH
DISTRICT LOTS 1427, 2608, 1530, 2400, & 2851
CARIBOO DISTRICT - BRITISH COLUMBIA

SCALE: 1" = 200'

NOTE: Bearings are astronomic, derived from the East boundary of D.L. 2608 as shown on Plans 16863 & 17489.

LEGEND:
• OPP denotes an old pipe post found.
• OIP denotes an old iron pin found.
• IP denotes an iron pin placed on this survey.
• OBT denotes an old bearing tree found.

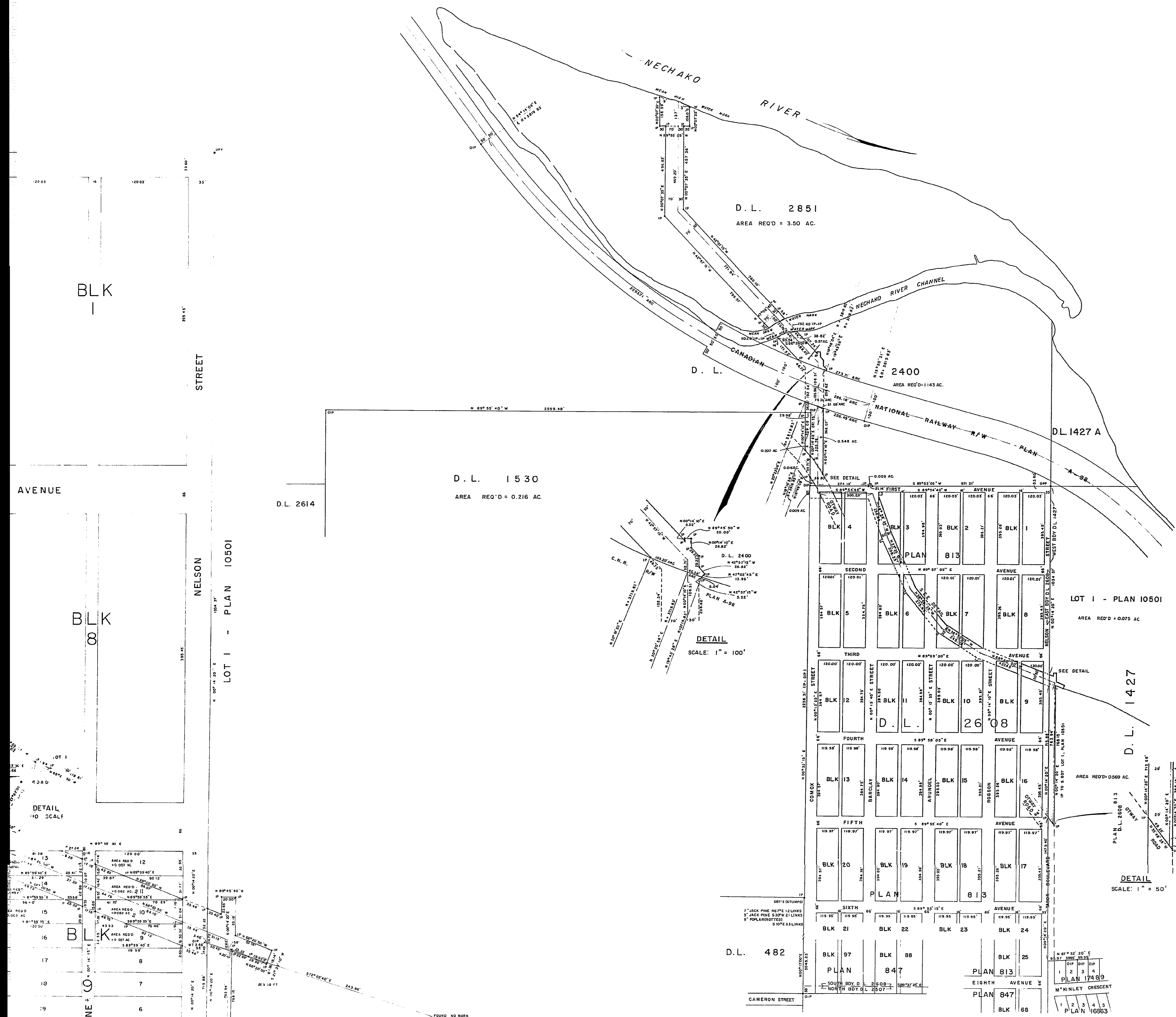
LOT	BLOCK	PLAN	D.L.	AREA REQUIRED
LOT 9	BLOCK 9	PLAN 813	D.L. 2608	0.027 AC.
LOT 10	BLOCK 9	PLAN 813	D.L. 2608	0.082 AC.
LOT 11	BLOCK 9	PLAN 813	D.L. 2608	0.062 AC.
LOT 12	BLOCK 9	PLAN 813	D.L. 2608	0.007 AC.
LOT 13	BLOCK 9	PLAN 813	D.L. 2608	0.087 AC.
LOT 14	BLOCK 9	PLAN 813	D.L. 2608	0.049 AC.
LOT 15	BLOCK 9	PLAN 813	D.L. 2608	0.003 AC.
LOT 12	BLOCK 10	PLAN 813	D.L. 2608	9.3 SQFT.
LOT 1	BLOCK 7	PLAN 813	D.L. 2608	0.085 AC.
LOT 2	BLOCK 7	PLAN 813	D.L. 2608	0.027 AC.
LOT 3	BLOCK 7	PLAN 813	D.L. 2608	0.001 AC.
LOT 19	BLOCK 7	PLAN 813	D.L. 2608	0.005 AC.
LOT 20	BLOCK 7	PLAN 813	D.L. 2608	0.026 AC.
LOT 21	BLOCK 7	PLAN 813	D.L. 2608	0.093 AC.
LOT 22	BLOCK 7	PLAN 813	D.L. 2608	0.078 AC.
LOT 23	BLOCK 7	PLAN 813	D.L. 2608	0.044 AC.
LOT 24	BLOCK 7	PLAN 813	D.L. 2608	0.008 AC.
LOT 6	BLOCK 6	PLAN 813	D.L. 2608	0.005 AC.
LOT 7	BLOCK 6	PLAN 813	D.L. 2608	0.024 AC.
LOT 8	BLOCK 6	PLAN 813	D.L. 2608	0.044 AC.
LOT 9	BLOCK 6	PLAN 813	D.L. 2608	0.058 AC.
LOT 10	BLOCK 6	PLAN 813	D.L. 2608	0.059 AC.
LOT 11	BLOCK 6	PLAN 813	D.L. 2608	0.046 AC.
LOT 12	BLOCK 6	PLAN 813	D.L. 2608	0.035 AC.
LOT 13	BLOCK 6	PLAN 813	D.L. 2608	0.003 AC.
LOT 1	BLOCK 3	PLAN 813	D.L. 2608	0.003 AC.
LOT 13	BLOCK 3	PLAN 813	D.L. 2608	0.010 AC.
LOT 14	BLOCK 3	PLAN 813	D.L. 2608	0.009 AC.
LOT 15	BLOCK 3	PLAN 813	D.L. 2608	0.017 AC.
LOT 16	BLOCK 3	PLAN 813	D.L. 2608	0.026 AC.
LOT 17	BLOCK 3	PLAN 813	D.L. 2608	0.035 AC.
LOT 18	BLOCK 3	PLAN 813	D.L. 2608	0.043 AC.
LOT 19	BLOCK 3	PLAN 813	D.L. 2608	0.048 AC.
LOT 20	BLOCK 3	PLAN 813	D.L. 2608	0.050 AC.
LOT 21	BLOCK 3	PLAN 813	D.L. 2608	0.051 AC.
LOT 22	BLOCK 3	PLAN 813	D.L. 2608	0.059 AC.
LOT 23	BLOCK 3	PLAN 813	D.L. 2608	0.046 AC.
LOT 24	BLOCK 3	PLAN 813	D.L. 2608	0.035 AC.
LOT 11	BLOCK 4	PLAN 813	D.L. 2608	0.009 AC.
LOT 12	BLOCK 4	PLAN 813	D.L. 2608	0.091 AC.
LOT 13	BLOCK 4	PLAN 813	D.L. 2608	0.035 AC.
LOT 14	BLOCK 4	PLAN 813	D.L. 2608	0.003 AC.
LOT 1	BLOCK 4	PLAN 10501	D.L. 1427	0.075 AC.
		D.L. 1427		0.569 AC.
		D.L. 1530		0.216 AC.
		D.L. 2851		3.50 AC.
		D.L. 2400		1.143 AC.

I, DONALD A. DUFFY, of the City of Prince George, a British Columbia Land Surveyor make oath and say that I was present at and did personally supervise the survey represented by this plan and that the survey and plan are correct. The said survey was completed on the 9th day of August, 1968.

D. Duffy
B.C.L.S.

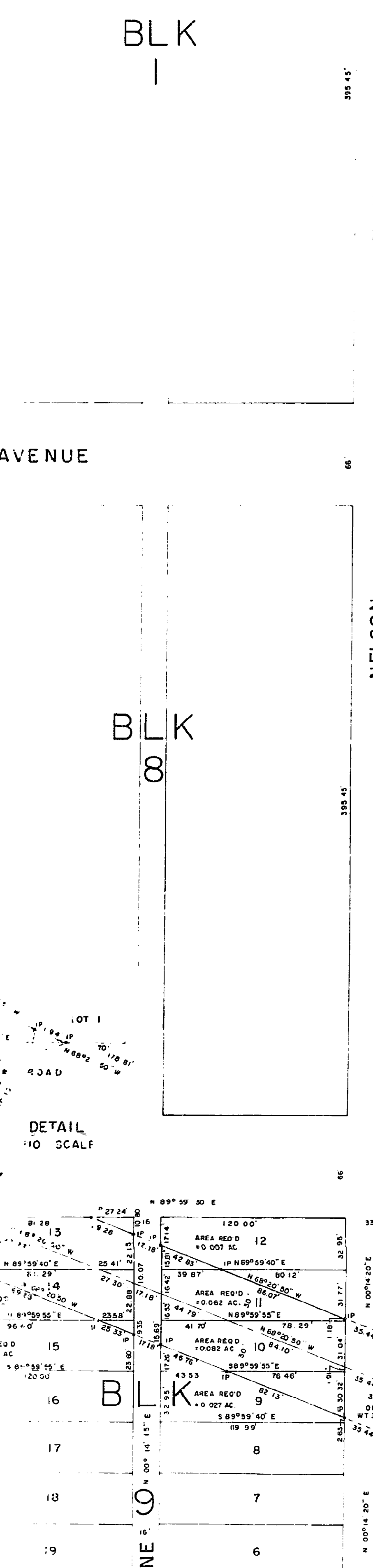
Sworn before me this 27th day of August, 1968.

W.D. Usher
A Commissioner for taking Affidavits for British Columbia.



DETAIL
SCALE: 1" = 100'

DETAIL
SCALE: 1" = 50'



AVENUE

BLK 1

BLK 8

BLK 6

LANE 6

LANE 6

LOT 1 - PLAN 10501

LOT 1 - PLAN 10501

LOT 1 - PLAN 10501

LOT 1 - PLAN 10501

LOT 1 - PLAN 10501

LOT 1 - PLAN 10501

LOT 1 - PLAN 10501

LOT 1 - PLAN 10501

LOT 1 - PLAN 10501

LOT 1 - PLAN 10501

LOT 1 - PLAN 10501

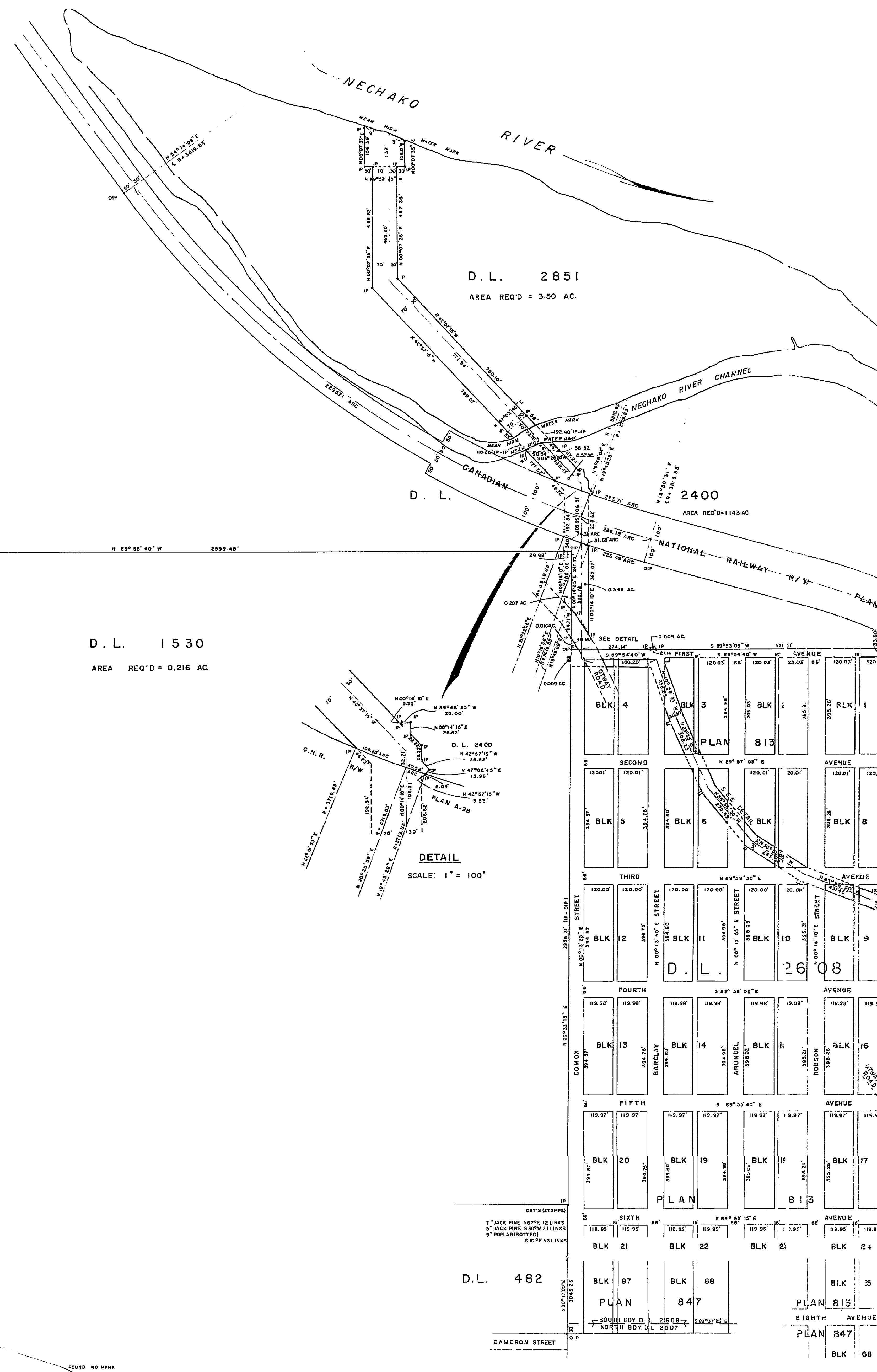
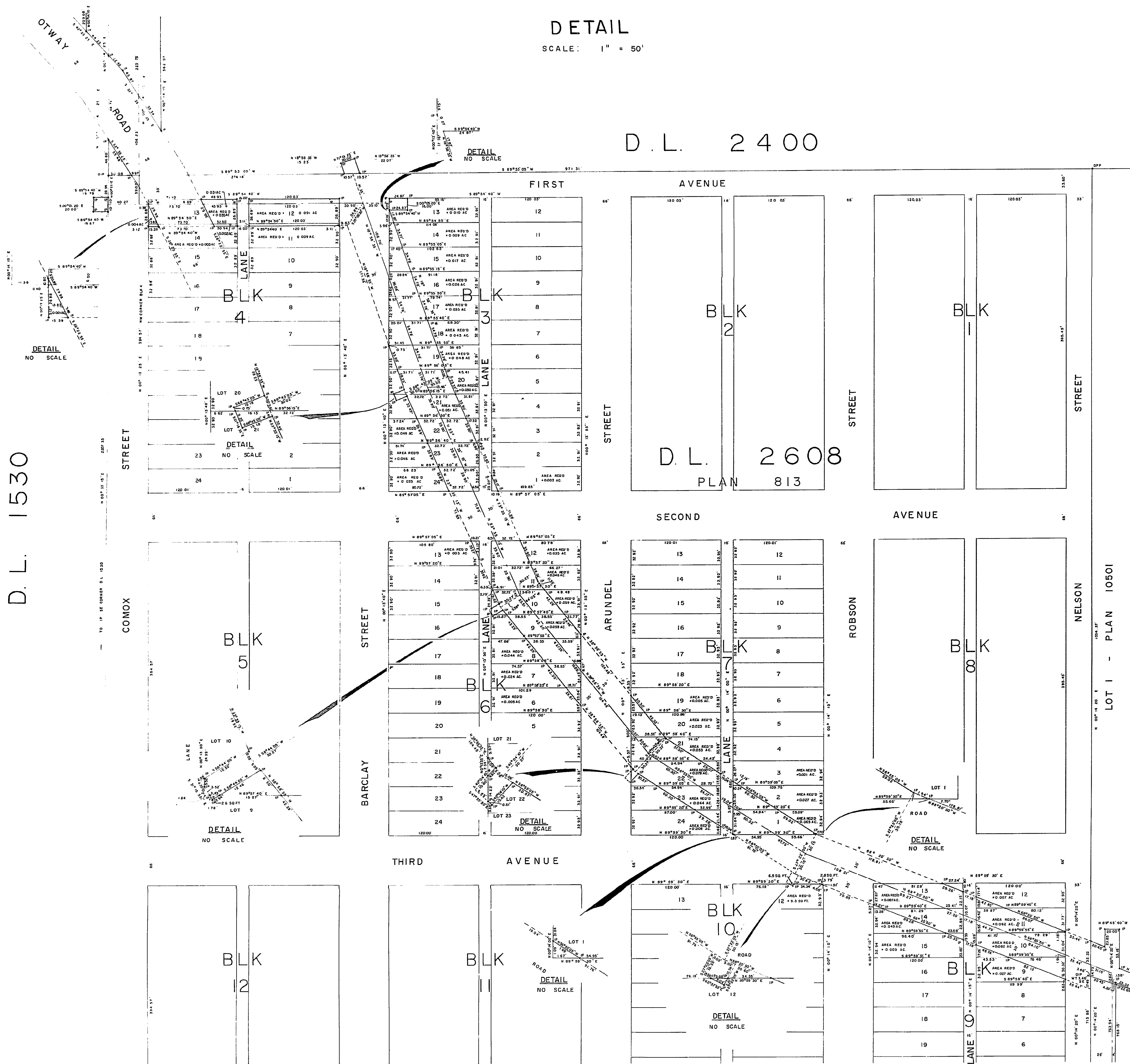
LOT 1 - PLAN 10501

D.L. 1530

DETAIL

SCALE: 1" = 50'

D.L. 2400



D.L. 1530

AREA REQ'D = 0.216 AC.

D.L. 2851

AREA REQ'D = 3.50 AC.

D.L. 482

PLAN 847

PLAN 813

PLAN 847

PLAN 813

PLAN 847

PLAN 813