

17631

PLAN NO. 17631  
Deposited in the Land Registry Office of  
Prince George this 19th day of August 1968

Registrar

- BESSBOROUGH AVE. CUL-DE-SAC
1. S. 48° 27' 00" E.
  2. S. 03° 20' 43" W.
  3. S. 50° 09' 20" W.
  4. N. 73° 03' 51" W.
  5. S. 20° 08' 42" W.
  6. N. 02° 51' 03" E.
  7. N. 48° 56' 40" E.
- ABERDEEN CRESCENT CUL-DE-SAC
1. N. 68° 01' 40" E.
  2. N. 68° 45' 35" E.
  3. S. 50° 09' 20" W.
  4. N. 73° 03' 51" W.
  5. S. 20° 08' 42" W.
  6. N. 02° 51' 03" E.
  7. N. 48° 56' 40" E.
  8. S. 45° 14' 50" W.
  9. S. 45° 14' 50" W.
  10. N. 15° 15' 28" W.
  11. N. 45° 54' 40" E.
  12. S. 45° 14' 50" W.
  13. S. 45° 14' 50" W.
  14. S. 45° 14' 50" W.
  15. S. 45° 14' 50" W.
  16. S. 45° 14' 50" W.
  17. S. 45° 14' 50" W.
  18. S. 45° 14' 50" W.
  19. S. 45° 14' 50" W.
  20. S. 45° 14' 50" W.
- ALEXANDER CRESCENT CUL-DE-SAC
1. N. 68° 01' 40" E.
  2. N. 68° 45' 35" E.
  3. S. 50° 09' 20" W.
  4. N. 73° 03' 51" W.
  5. S. 20° 08' 42" W.
  6. N. 02° 51' 03" E.
  7. N. 48° 56' 40" E.
  8. S. 45° 14' 50" W.
  9. S. 45° 14' 50" W.
  10. N. 15° 15' 28" W.
  11. N. 45° 54' 40" E.
  12. S. 45° 14' 50" W.
  13. S. 45° 14' 50" W.
  14. S. 45° 14' 50" W.
  15. S. 45° 14' 50" W.
  16. S. 45° 14' 50" W.
  17. S. 45° 14' 50" W.
  18. S. 45° 14' 50" W.
  19. S. 45° 14' 50" W.
  20. S. 45° 14' 50" W.

D.L. 8177

PCL. A  
DD. 74102M

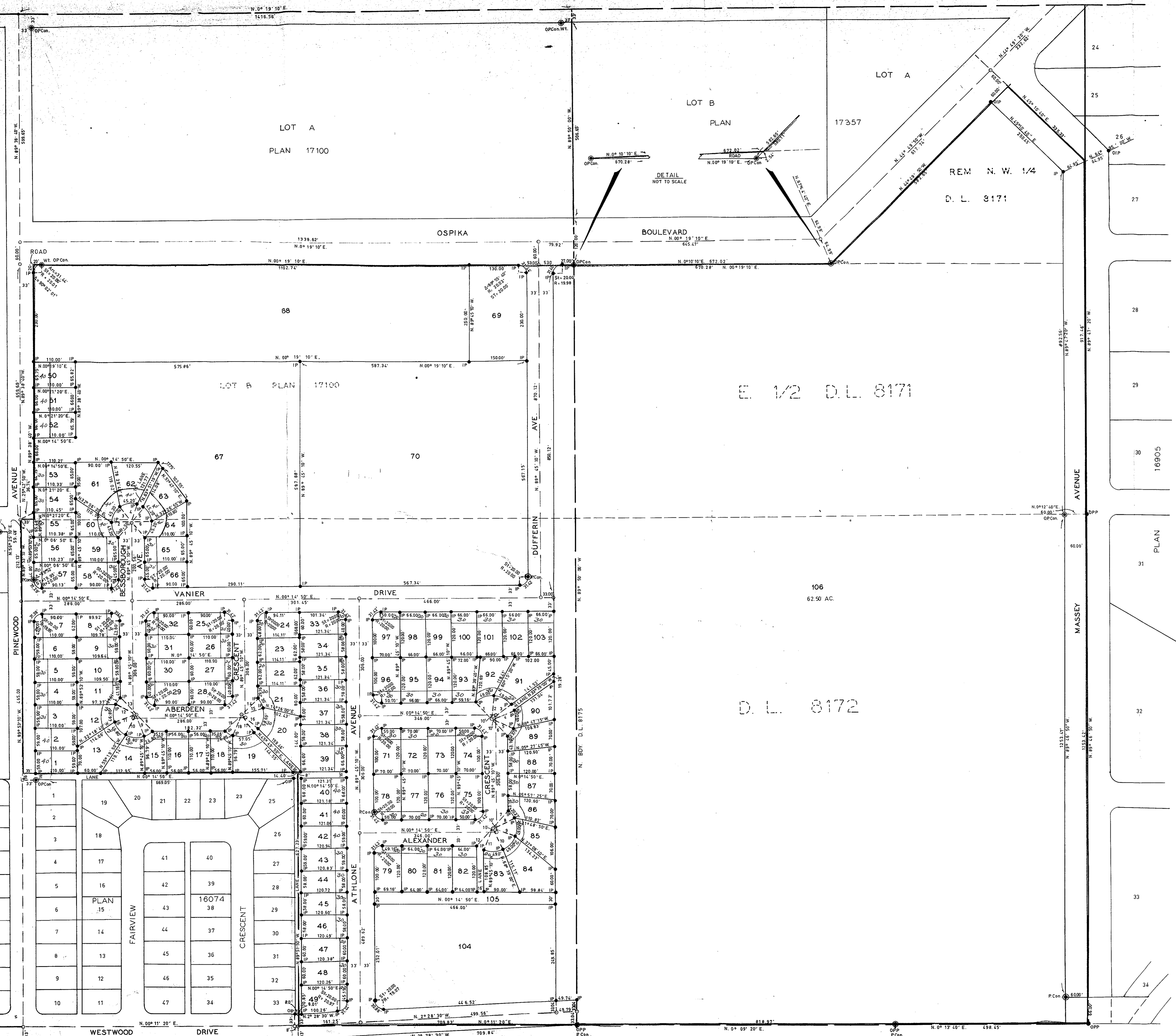
D.L. 8178

FERN CRES.

11	10
12	9
13	8
14	7
15	6
16	5
17	4
18	3
19	2
20	1

PLAN 16808

BK. 1



E. 1/2 D.L. 8171

D.L. 8172

PLAN OF SUBDIVISION OF  
NORTH WEST 1/4 DISTRICT LOT 8171  
EXCEPT PLAN 17357 AND PLAN 16905,  
EAST HALF DISTRICT LOT 8171,  
DISTRICT LOT 8172,  
LOT B, PLAN 17100 EAST 1/2  
DISTRICT LOT 8174,  
NORTH HALF DISTRICT LOT 8175,  
SOUTH WEST 1/4 DISTRICT LOT 8175,  
CARIBOO DISTRICT.  
SCALE: 1"=100'

- Bearings are astronomic derived from OPCen on the West Bay, Lot B, Plan 17100.
- OPCen - Standard post in concrete.
  - PP - Standard pipe post.
  - IP - Standard iron post.
  - - Denoting "split".
  - WT - Denoting "witness".

I, R. J. Goble of the City of Prince George, British Columbia, Land Surveyor, make oath and say that I was present at and did personally supervise the survey represented by this plan and that the survey and plan are correct.  
The said survey was completed on the 16th day of August, 1968.

*R. J. Goble*  
R. J. Goble, B.C.L.S.

Approved under the Land Registry Act on the 19th day of August, 1968

Sworn before me at Prince George this 16th day of August, 1968.

*P. S. Galt*  
Approving Officer  
City of Prince George

*William Goble*  
Commissioner for Towns, Districts and  
British Columbia.

*J. Neff*

The Seal of the Corporation of the City of Prince George was affixed hereto in the presence of:

Mayer \_\_\_\_\_  
Clerk \_\_\_\_\_