

RECEIVED

SEP 20 1968

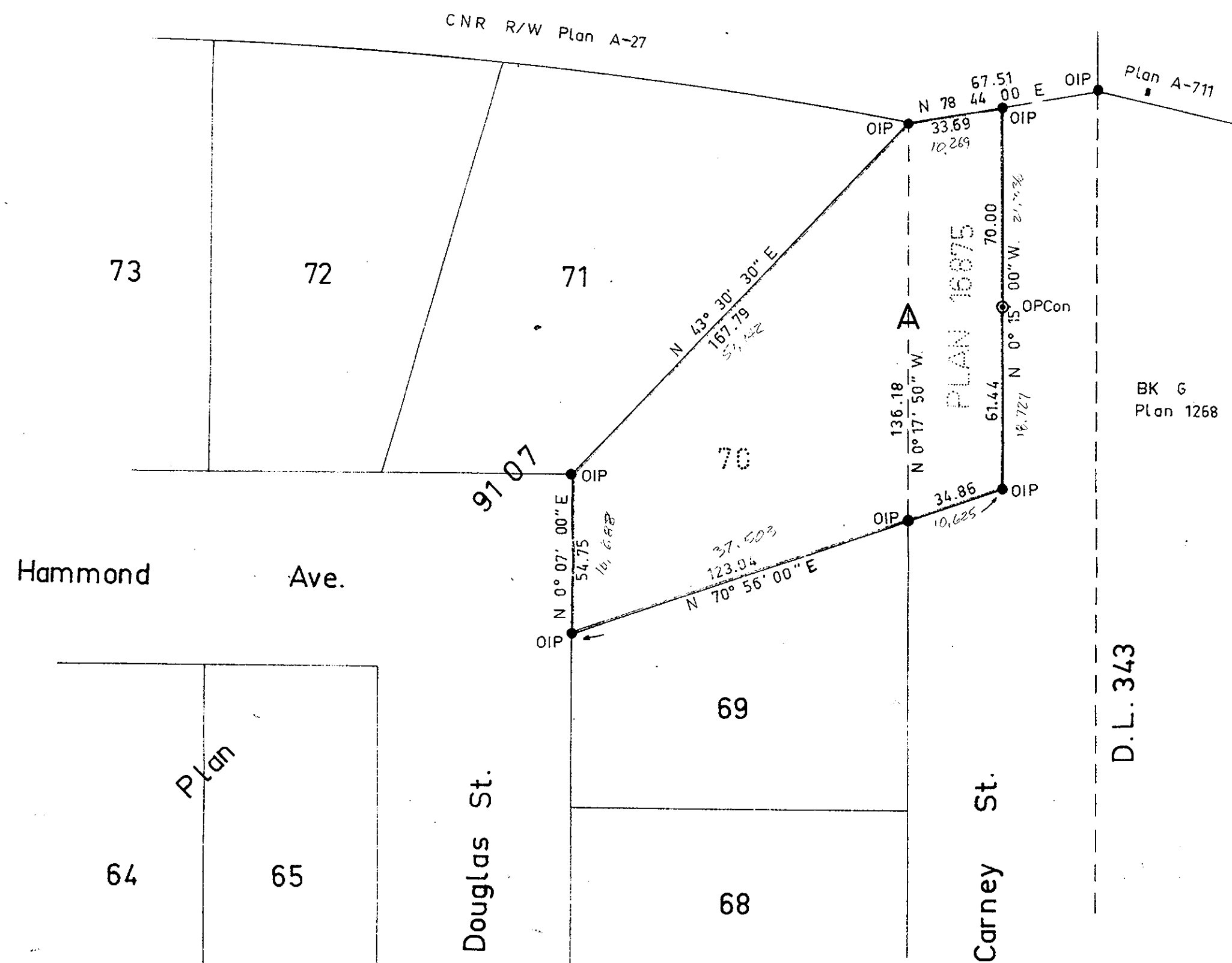
CITY ASSESSOR  
PRINCE GEORGE

PLAN No 17603

Deposited in the Land Registry Office  
at Prince George on the 22nd day of JANUARY 1968.

*A. Daniluk*  
Registrar.

PLAN OF SUBDIVISION OF  
LOT 70, PLAN 9107, AND ALL THAT PORTION OF  
CLOSED ROAD AS SHOWN ON PLAN 16875,  
DISTRICT LOT 938, CARIBOO DISTRICT.  
scale : 1"= 40'



Bearings are astronomic and are derived from  
OIPs. ON THE EAST BDY. LOT 70 SHOWN AS  
N 0° 17' 50" W ON PLAN 16875

- P.con. .... Standard Concrete Post.
- P.Rock ..... Standard Rock Post.
- P.P ..... Standard Pipe Post.
- I.P ..... Standard Iron Post
- P. .... Wooden Post.
- L.P ..... Lead Plug.
- ..... Denoting "Old"
- WT. .... Denoting "Witness"

I, A. DANILUK, of the CITY OF PRINCE GEORGE  
British Columbia Land Surveyor, make oath and  
say that I was present at and did personally  
superintend the survey represented by this  
plan and that the survey and plan are correct.  
The said survey was completed on  
the 22nd day of JANUARY 1968.

*A. Daniluk*

Sworn before me at Prince George B.C.  
this 22nd day of January 1968.

*M. J. O'Neil*  
Commissioner for taking affidavits  
for within British Columbia.

Approved under the Land Registry Act  
on the 20th day of FEB 1968.

*C. E. O'Neil*  
Approving Officer  
CITY OF PRINCE GEORGE

Reapproved July 10th 1968

*Choboy*  
Approving Officer  
CITY OF PRINCE GEORGE

Owner *Ronald John Parker*  
*Phyllis J. Parker*  
Witness *John Stewart*  
*James Stewart*  
*Princess Margaret*

Central Mortgage and Housing Corporation  
*John W. Goble*  
General Solicitor

McWilliam - Whyte - Serle - Goble  
B.C. Land Surveyors  
Kamloops - Prince George  
REF. No. 68006