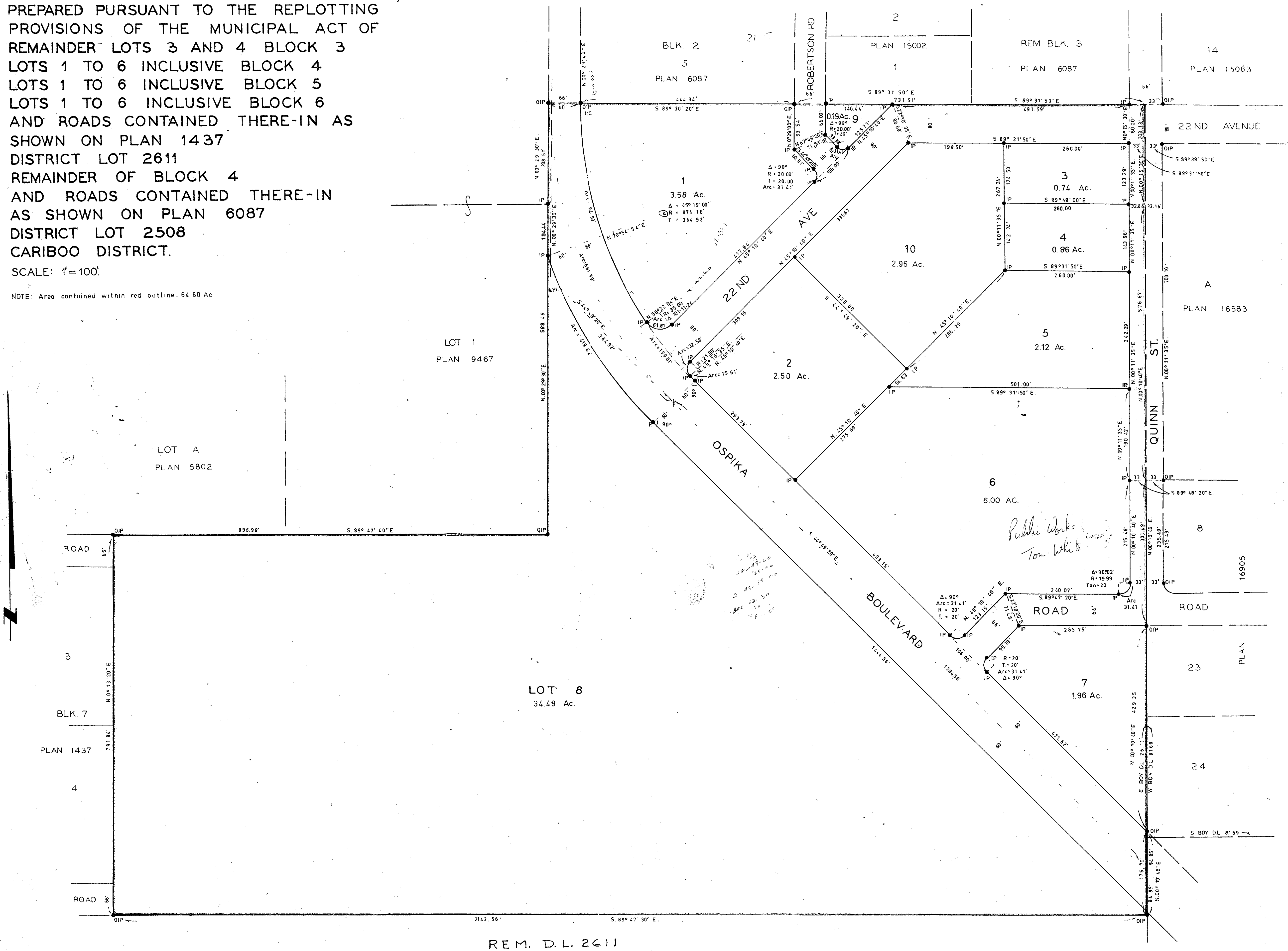


PLAN OF SUBDIVISION OF PARCEL A, PLAN 17581,  
 PREPARED PURSUANT TO THE REPLOTTING  
 PROVISIONS OF THE MUNICIPAL ACT OF  
 REMAINDER LOTS 3 AND 4 BLOCK 3  
 LOTS 1 TO 6 INCLUSIVE BLOCK 4  
 LOTS 1 TO 6 INCLUSIVE BLOCK 5  
 LOTS 1 TO 6 INCLUSIVE BLOCK 6  
 AND ROADS CONTAINED THERE-IN AS  
 SHOWN ON PLAN 1437  
 DISTRICT LOT 2611  
 REMAINDER OF BLOCK 4  
 AND ROADS CONTAINED THERE-IN  
 AS SHOWN ON PLAN 6087  
 DISTRICT LOT 2508  
 CARIBOO DISTRICT.

SCALE: 1"=100'  
 NOTE: Area contained within red outline=64.60 Ac

PLAN No 17582  
 Deposited in the Land Registry Office at  
 Prince George this 23<sup>rd</sup> day  
 of July 1968  
 Registrar



LEGEND  
 Bearings are astronomic derived  
 from O.P.s on West Bdy D - 8169  
 plan 16905  
 ● IP --- Iron post set  
 ● OIP --- Iron post found

Approved under the Land Registry Act  
 this 28<sup>th</sup> day of July 1968

*[Signature]*  
 Approving Officer  
 City of Prince George

I, A. Donluck, of the City of Prince George  
 British Columbia Land Surveyor make oath  
 and say that I was present at and did  
 personally supervise the survey represented  
 by this plan and that the survey and plan  
 are correct.  
 The survey was completed on the 21<sup>st</sup> day  
 of June 1968

*[Signature]*  
 A. Donluck  
 B.C.L.S.

Sworn before me at Prince George this 24<sup>th</sup> day  
 of July 1968

*[Signature]*  
 Commissioner for taking affidavits by  
 British Columbia.

The Seal of the Corporation of the  
 City of Prince George was affixed  
 hereto in the presence of:

*[Signature]*  
 Mayor

*[Signature]*  
 City Clerk

MCWILLIAM, WHYTE, GOBLE & ASSOCIATES  
 B.C. LAND SURVEYORS  
 PRINCE GEORGE, KANLOORS  
 REF. NO. 6800-2