

RECEIVED

AUG 21 1968

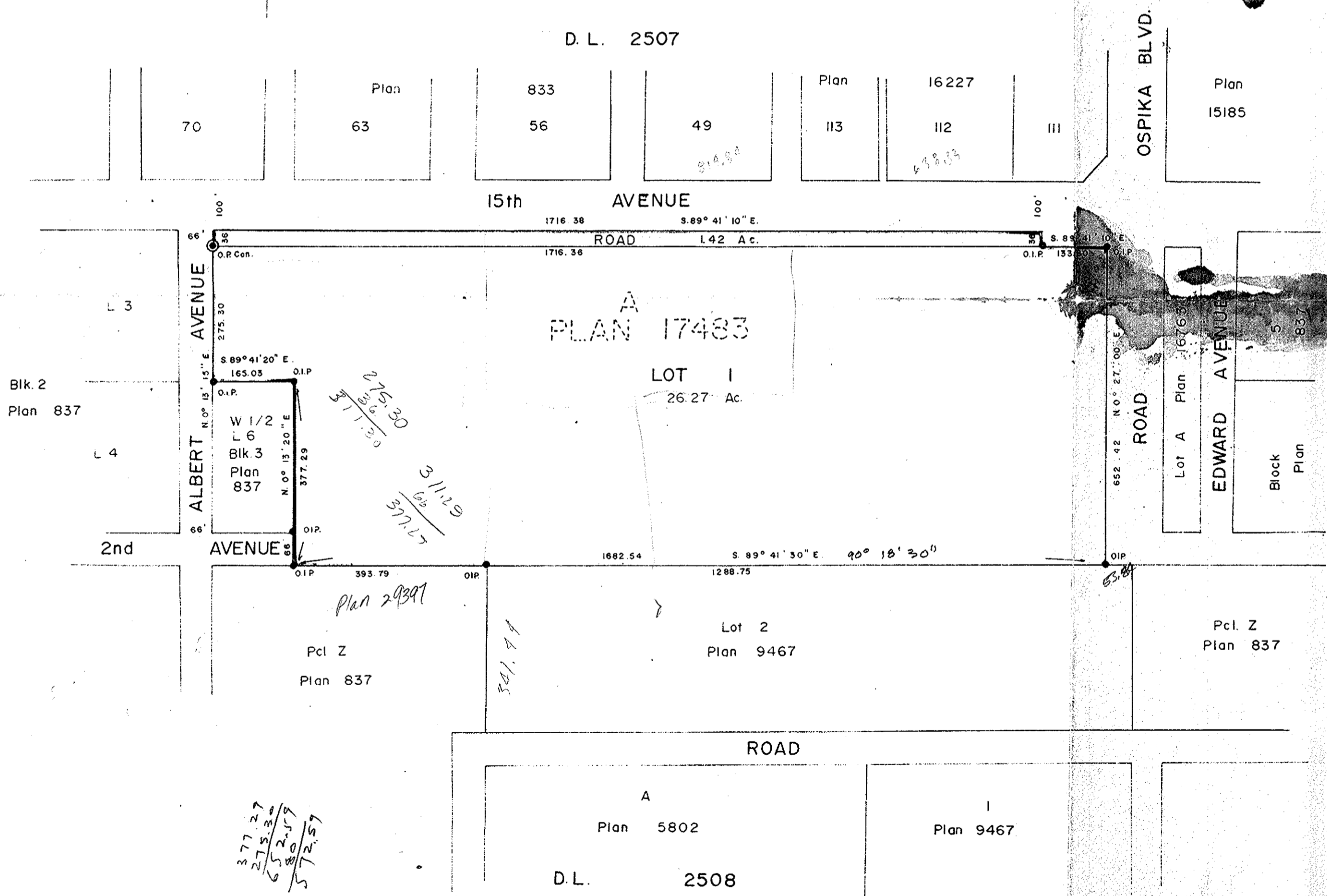
CITY ASSESSOR
PRINCE GEORGE

PLAN NO. 17575

Deposited in the Land Registry Office at
Prince George this 28 day of JULY 1968.

Registrar

PLAN OF SUBDIVISION OF
PARCEL A, PLAN 17483,
DISTRICT LOT 2508,
CARIBOO DISTRICT
SCALE: 1" = 200'



- Bearings are astronomic and are derived from
Plan 16763 N.0°27'00"E.
- ⊙ P.con. Standard Concrete Post.
 - ⊙ P.Rock Standard Rock Post.
 - P.P. Standard Pipe Post.
 - I.P. Standard Iron Post.
 - P. Wooden Post.
 - L.P. Lead Plug.
 - O. Denoting "Old"
 - WT. Denoting "Witness"

I, V. Bartlett, of the City of Prince George
British Columbia Land Surveyor, make oath and
say that I was present at and did personally
superintend the survey represented by this
plan and that the survey and plan are correct.
The said survey was completed on
the 10 day of JUNE 1968.

V. Bartlett

Sworn before me at Prince George
this 10 day of JUNE 1968.

D.W. Sutton
Commissioner for taking affidavits
for British Columbia.

Cl. Plot
Approving Officer

Owner *J. O'S*
MAYOR

OWNER WITNESS *Ana Thomson*
CLERK

McWilliam - Whyte - Serle - Goble
B.C. Land Surveyors
Kamloops - Prince George
REF. NO. 67100-13

Handwritten calculations:
275.30
377.29
311.29
66
377.29

Handwritten calculations:
377.27
275.30
652.57
80
572.57