

PLAN OF SUBDIVISION OF PART OF  
 LOT A PLAN 16588  
 DISTRICT LOT 4047  
 CARIBOO DISTRICT-BRITISH COLUMBIA  
 SCALE: 1" = 100'

NOTE: Bearings are astronomic, derived from  
 the East boundary of Lot A, Plan 16588

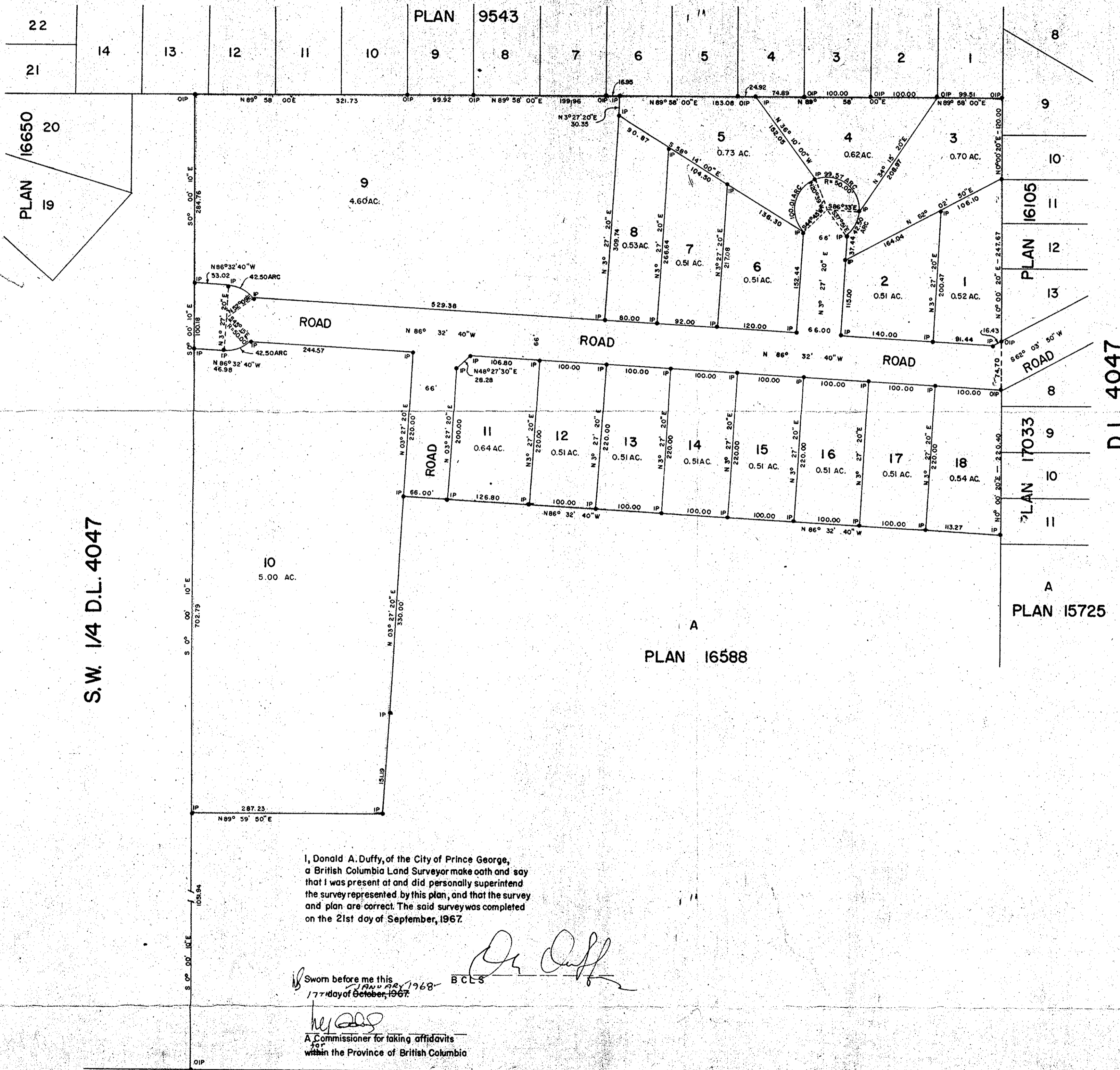
LEGEND: • OIP Denotes an old iron pin found  
 • IP Denotes an iron pin placed on this survey

Plan No. 17497

Deposited in the Land Registry Office  
 of Prince George, British Columbia  
 this 28<sup>th</sup> day of May 1968

Registrar

D.L. 4047



I, Donald A. Duffy, of the City of Prince George,  
 a British Columbia Land Surveyor make oath and say  
 that I was present at and did personally superintend  
 the survey represented by this plan, and that the survey  
 and plan are correct. The said survey was completed  
 on the 21st day of September, 1967.

Sworn before me this 17<sup>th</sup> day of October, 1968  
 B.C.L.S. *[Signature]*

A Commissioner for taking affidavits  
 within the Province of British Columbia

*Todd Campbell*  
 Owner  
*Todd Campbell*  
 Witness  
*Walter E. Lewis*  
 do to both signatures  
 Campbell Enterprises Ltd  
 Todd Campbell Pres.

Approved under the Land Registry Act  
 this 15<sup>th</sup> day of January 1968.

*[Signature]*  
 Approving Officer, Dept. of Highways

*[Signature]*  
 MAY 13<sup>th</sup> 1968.