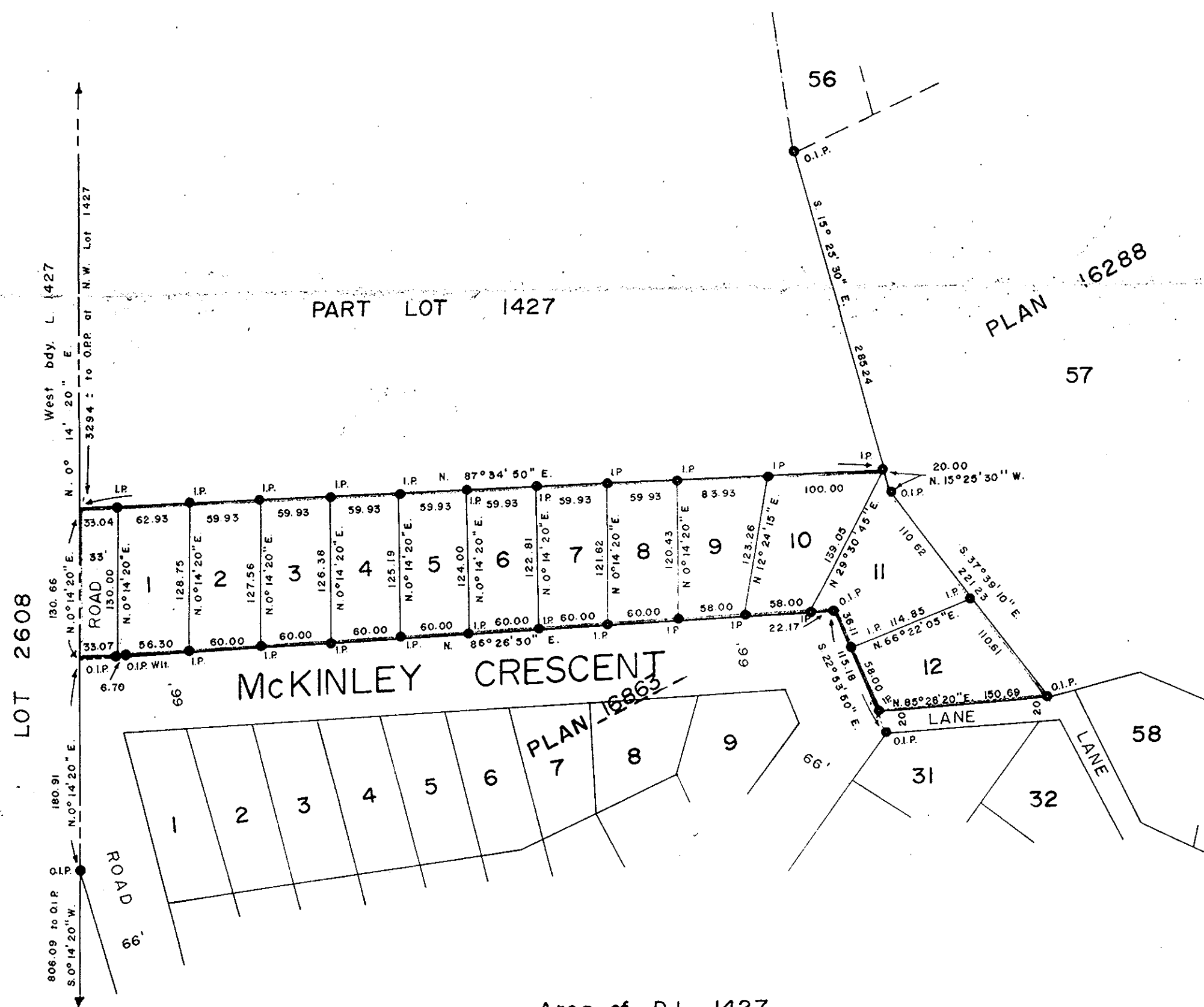


PLAN OF SUBDIVISION OF
PART OF LOT 1427,
CARIBOO DISTRICT.

SCALE: 1" = 100'

Exceptions to Title

Plan	15089
	15150
	15314
	16056
	16180
	16288



Area of D.L. 1427
within Red Outline
= 2.355 Ac.

RECEIVED

JUN 25 1968

CITY ASSESSOR
PRINCE GEORGE

PLAN No 17489

Deposited in the Land Registry Office
at PRINCE GEORGE on the 23 day of May 1968.

[Signature]
Registrar

Bearings are astronomic and are derived from
O.I.P.s on the N. Bdy. of McKinley Crescent as
shown on Plan 16893

- ⊙ P.con. Standard Concrete Post.
- ⊙ P.Rock Standard Rock Post.
- P.P. Standard Pipe Post.
- I.P. Standard Iron Post.
- P. Wooden Post.
- L.P. Lead Plug.
- Denoting "Old"
- WT. Denoting "Witness"

I, A. Daniluck, of the City of Prince George,
British Columbia Land Surveyor, make oath and
say that I was present at and did personally
superintend the survey represented by this
plan and that the survey and plan are correct.
The said survey was completed on
the 5th day of April 1967.

[Signature]
A. Daniluck, B.C.L.S.

Sworn before me at *[Signature]*
this 22 day of April 1968.

[Signature]
Commissioner for taking affidavits
for British Columbia.

HIGHLAND RESOURCES LTD.
Owner *[Signature]*

Witness

Approved under the Land Registry Act
on the 24th day of APRIL 1968.

[Signature]
C. E. Obat
Approving Officer
City of Prince George

BILL RANBY INVESTMENTS LTD.

[Signature]
P. J. [unclear]

GILBERT WARREN SES

[Signature]

VENTURES SAWMILL LTD.

[Signature]

Witness

[Signature]

McWilliam - Whyte - Goble & Associates
B.C. Land Surveyors
Prince George, B.C.

REF. NO. 64027-II