

PLOTTED (OK)

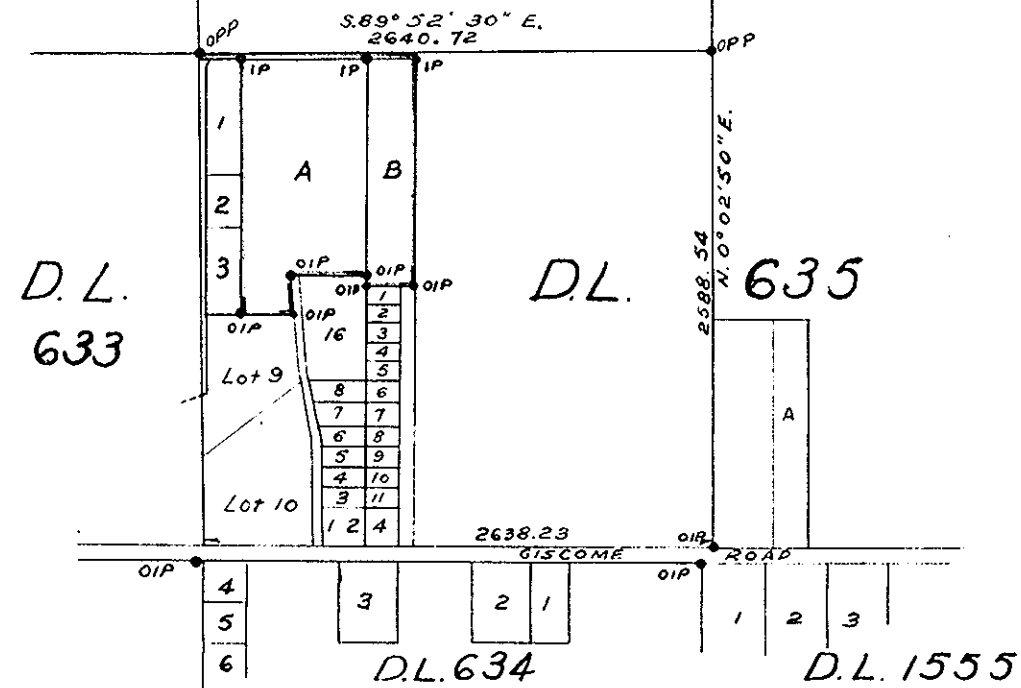
PLAN No 17485
Deposited in the Land Registry Office at
Prince George, B.C. on the 21st day of May 1968

[Signature]
Registrar

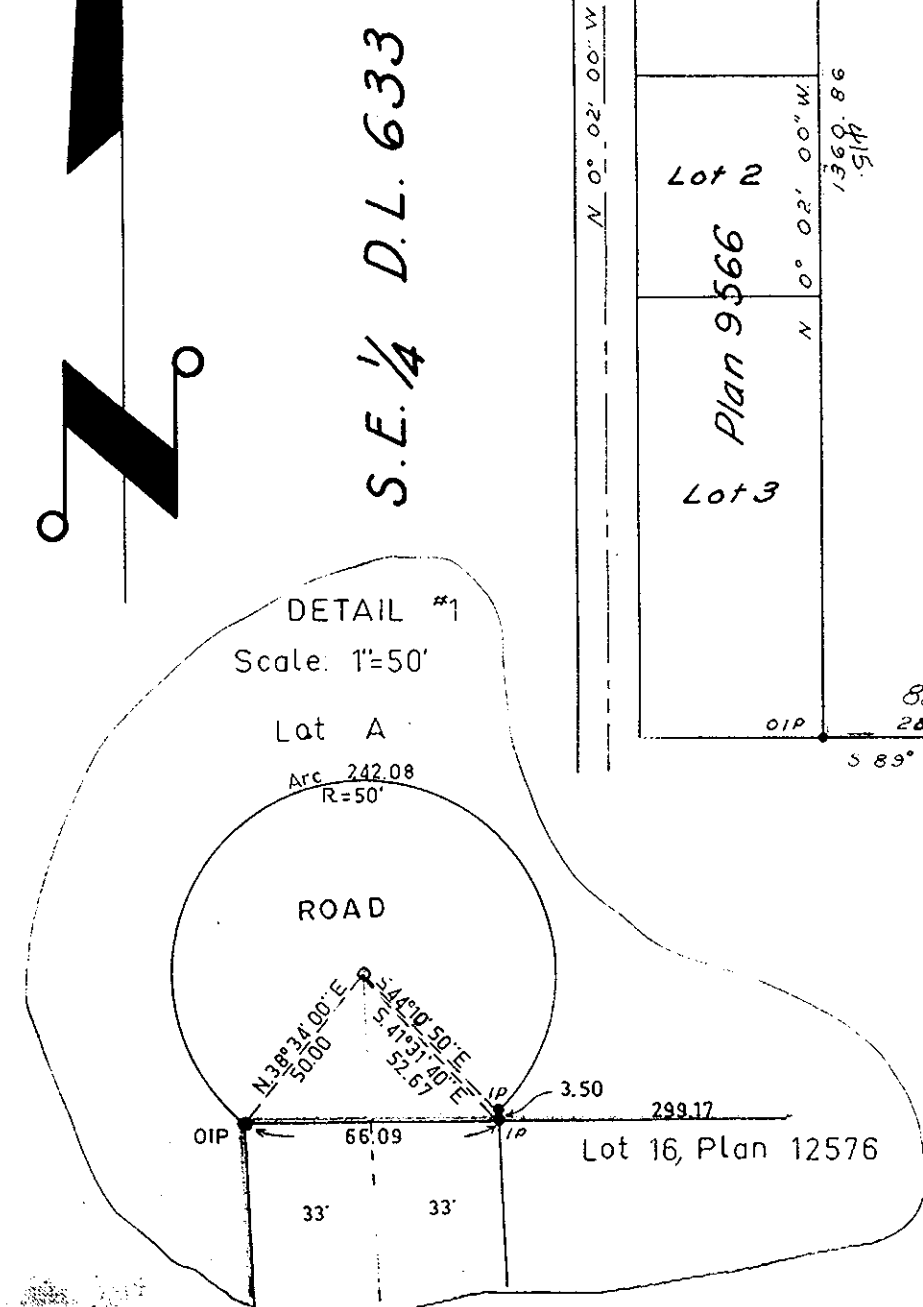
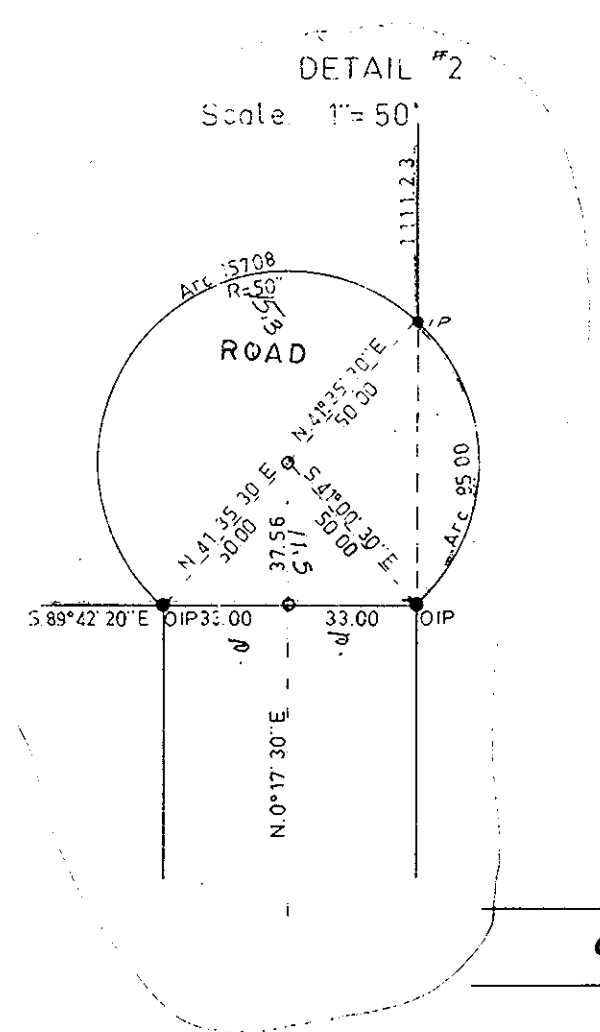
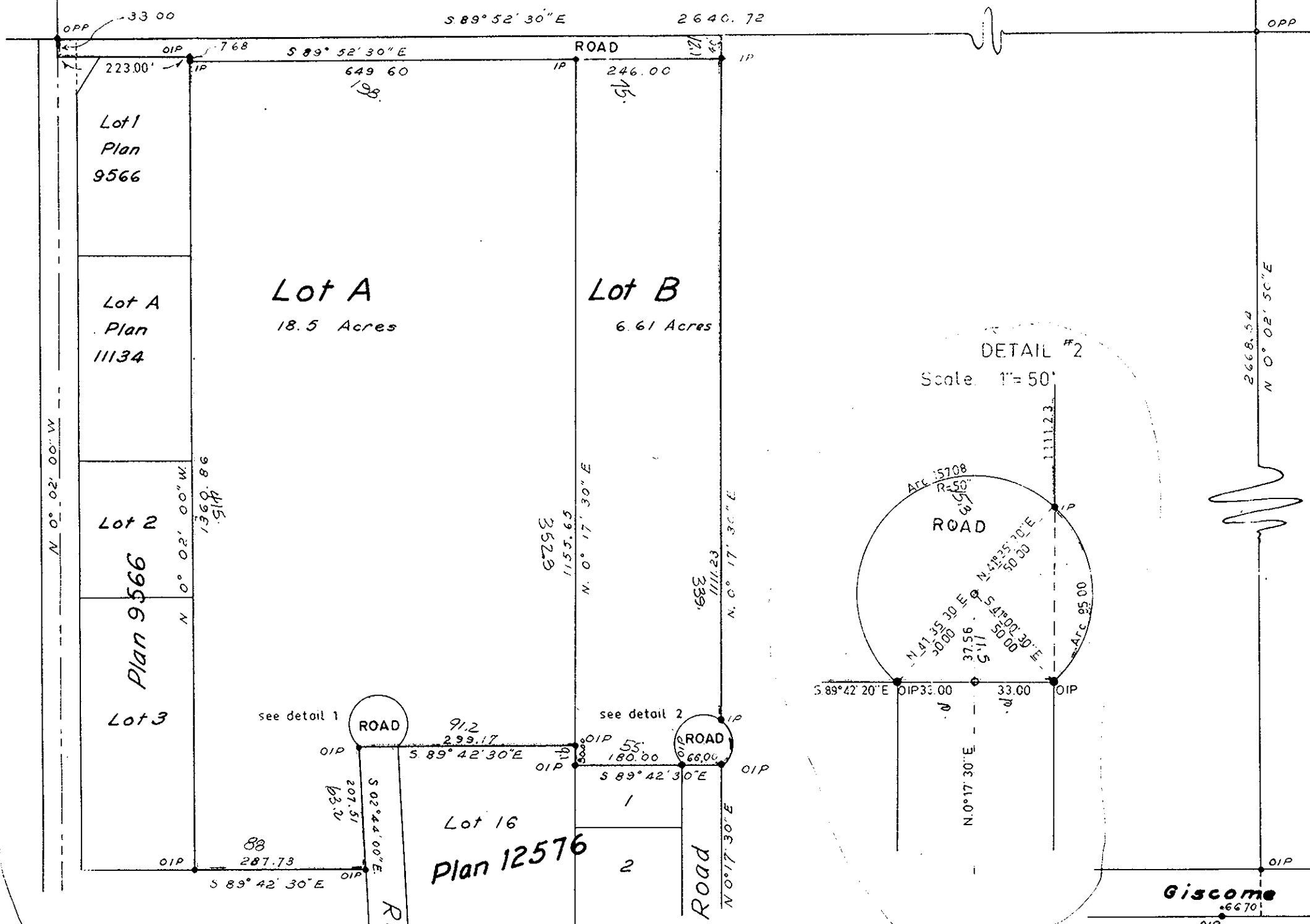
Plan of Subdivision of Part of the South West 1/4 of District Lot 635 Cariboo District.

Scale: 1 inch = 200 feet.

Key Plan
Scale - 1" = 1000'



N.W. 1/4 D.L. 635



Bearings are astronomic and are derived from
the North Boundary of the South West 1/4
of District Lot 635

- NA. @ P. con. Standard Concrete Post.
- NA. @ P. Rock Standard Rock Post.
- PP Standard Pipe Post.
- I.P. Standard Iron Post.
- NA. O.P. Wooden Post.
- NA. @ L.P. Lead Plug.
- O Denoting "Old"
- NA.W.T. Denoting "Witness"

I, R.J. Goble, of the City of Prince George, British Columbia Land Surveyor, make oath and say that I was present at and did personally superintend the survey represented by this plan and that the survey and plan are correct.

The said survey was completed on the 19th day of May 1968

Sworn before me at Prince George, B.C. this 3rd day of May 1968

Approved under the Land Registry Act on the 13th day of May 1968

[Signature]
Approving Officer

[Signature]
A commissioner for taking affidavits within British Columbia

Owner *M.W. McSoren*

Witness *J.P. Howlett*