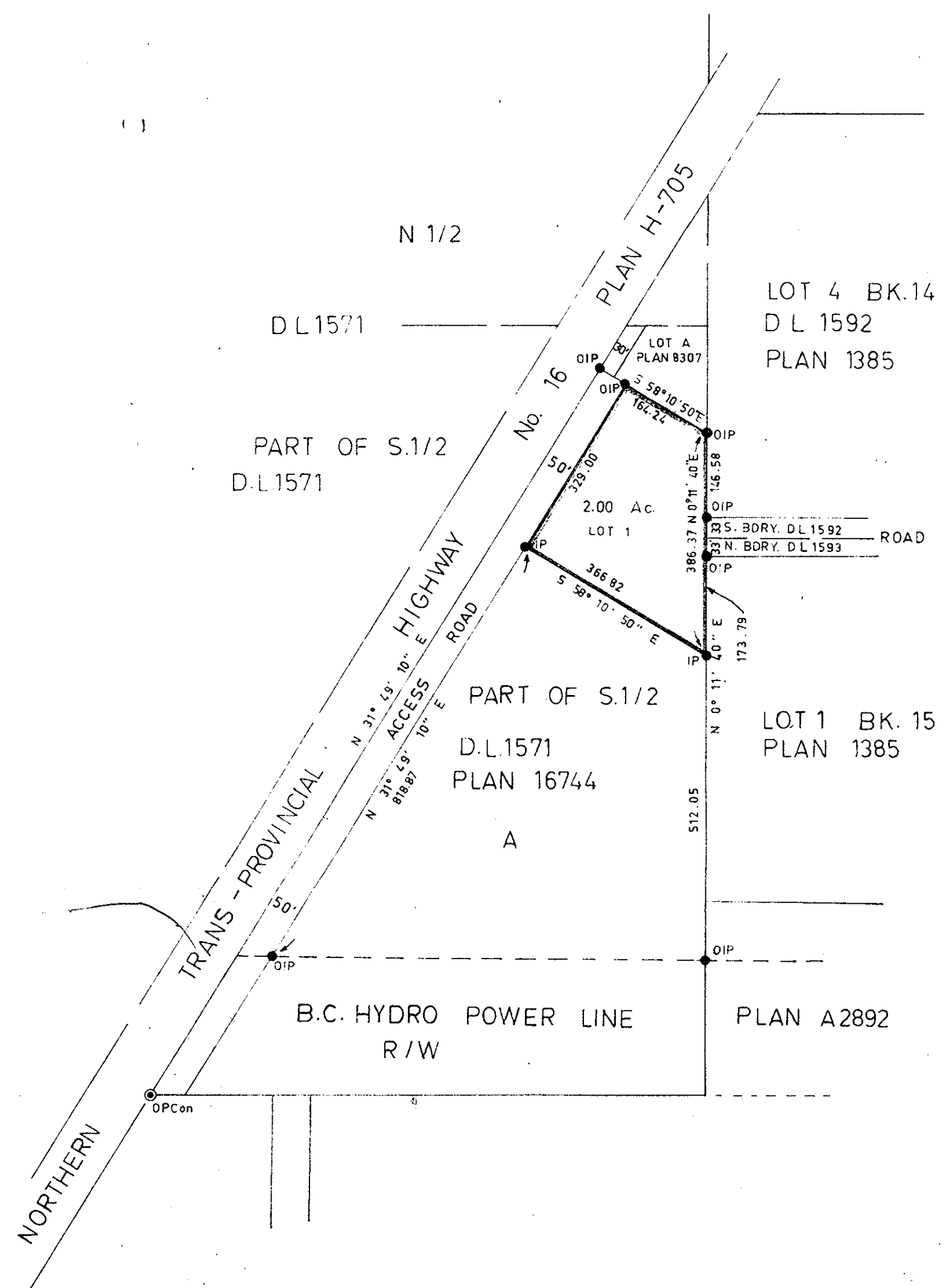


PLAN OF SUBDIVISION OF PART OF LOT A, PLAN 16744, SOUTH 1/2 OF D L 1571, CARIBOO DISTRICT.

SCALE: 1" = 200 FEET

PLAN No 17480
Deposited in the Land Registry Office
at PRINCE GEORGE on the 16 day of May 1968.

E. H. Goble
Registrar.



Bearings are astronomic and are derived from PLAN H-705.

- Pcon Standard Concrete Post.
- P Rock Standard Rock Post.
- PP Standard Pipe Post.
- IP Standard Iron Post.
- P Wooden Post.
- LP Lead Plug
- Denoting "Old"
- WT Denoting "Witness"

I, R. J. GOBLE, of the CITY OF PRINCE GEORGE, British Columbia Land Surveyor, make oath and say that I was present at and did personally superintend the survey represented by this plan and that the survey and plan are correct.

The said survey was completed on the 15th day of JANUARY 1968.

B.C.L.S.

Sworn before me at PRINCE GEORGE this 18 day of JANUARY 1968.

Approved under the Land Registry Act on the 12th day of May 1968

J. D. Budd
Approving Officer
DEPT. HIGHWAYS

W. J. Dabbs
A Commissioner for taking affidavits within British Columbia

Owner *D. E. Burt*

Witness *John Schmit*
OWNER of R/P B 994

Witness *Yolande Van Sellaik*
WITNESS *W. J. Dabbs*

McWilliam - Whyte - Serle - Goble
B.C. Land Surveyors
Kamloops - Prince George
REF. No. 6774